

Quick Start Guide Dionex Inuvion IC system

Use this quick start guide to get your Thermo Scientific™ Dionex™ Inuvion™ IC system up and running quickly and easily.

IC tubing connections, priming and system rinse

1. Confirm the pump is turned off.
2. Connect the pump eluent line to a bottle containing 18 MΩ-cm resistivity or better ASTM Type 1 deionized (DI) water.
3. Prime the pump by opening the priming knob ¼ turn and selecting **Prime** on the Thermo Scientific™ Chromeleon™ Chromatography Data System (CDS) ePanel.
4. Wait until no bubbles are visible and water is flowing at a steady rate out of the pump waste line. Turn off the pump.
5. Close the priming knob to finger tight.
6. Turn on the pump, setting the flow rate to 1 mL/min, and flush the system with DI water for an hour. Turn off the pump.
7. Degas the eluent offline, then connect the pump eluent line to the bottle containing degassed eluent. Repeat priming steps 3-5.
8. Turn on the pump, set the flow rate to 1 mL/min, and flush the system for about 30 minutes.
5. Prepare and pump 2 mM eluent at 0.2 mL/min (4 mm) or 0.1 mL/min (2 mm) for 10 minutes.
6. **Note: The power to the suppressor must be off during this step;** take care to not to exceed 100 psi of backpressure on the suppressor. The backpressure to the suppressor includes any tubing, cell, and backpressure coils connected to the ELUENT OUT port of the suppressor.
7. Increase the flow rate to 0.5 mL/min (4 mm) or 0.125 mL/min (2 mm) for an additional 20 min.
8. Connect the suppressor ELUENT OUT to the conductivity cell (CD) INPUT.
9. For recycle mode, connect CD OUTPUT to suppressor REGEN IN. Connect the suppressor REGEN OUT to waste.
10. If using external water mode, you will need to supply DI water at approximately double the eluent flow rate into the REGEN IN port.
11. After completion of the above steps, resume normal operation using the correct application eluent strength and suppressor current recommendation.

Suppressor and column installation and conditioning

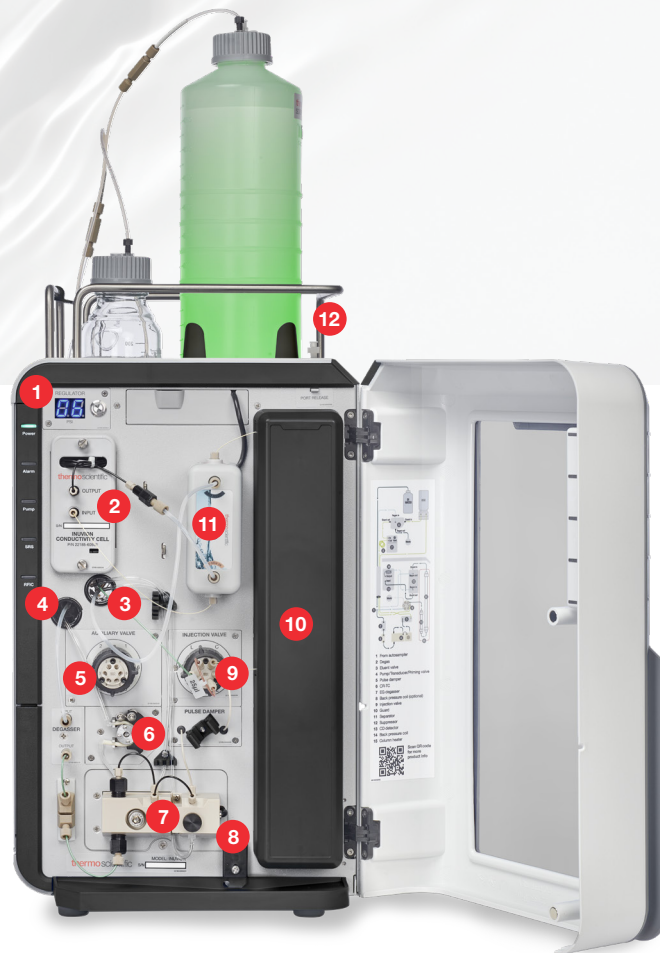
1. The columns must be placed so that the guard column is before the separator column and the flow direction following the column label arrows.
2. When installing a new IC column, after connecting the inlet of the column, direct the outlet of the column directly to waste. Pump eluent through the column at the standard flow rate for the column for at least 30 minutes before connecting to the suppressor. This prevents any storage solution or column residuals from flowing to the suppressor and expedites system equilibration time.
3. If the suppressor is not installed and connected to the system, the suppressor will need to be hydrated before use and then installed.
4. To hydrate an electrolytic suppressor, connect the tubing from the separator column to the ELUENT IN port on the suppressor. Then connect the suppressor ELUENT OUT tubing to the REGEN IN port using the appropriate short tubing pieces. Connect the REGEN OUT port to waste.

Preparing to run the system

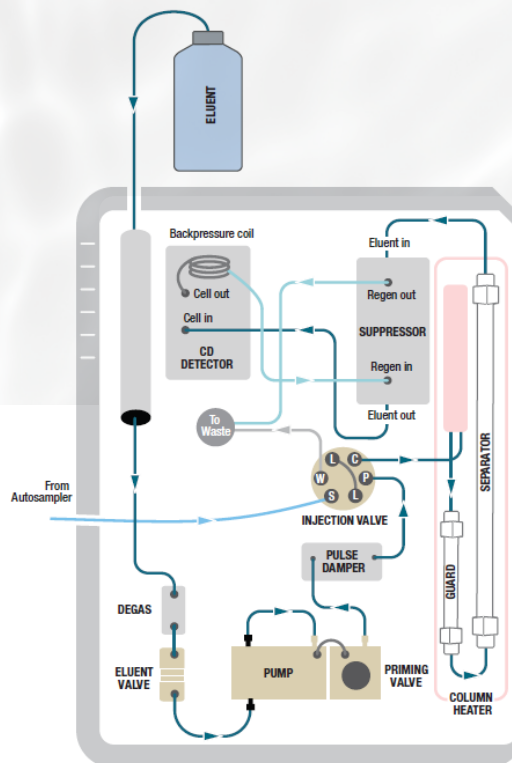
1. Use the eluent indicated for your method. Place the eluent line into the eluent bottle and start the pump at the flow rate prescribed in your method.
2. Equilibrate the system for 30-60 min. Monitor the baseline until the background conductivity is <5 µS/cm (hydroxide) or <25 µS/cm (carbonate) on a system set up for anion analysis or <2 µS/cm for cation analysis.
3. Start a sequence in Chromeleon CDS.

Dionex Inuvion Components

- 1 Digital pressure regulator (optional)
- 2 Conductivity cell
- 3 Tubing chase (to waste)
- 4 Tubing chase (to eluent organizer)
- 5 Auxiliary valve (optional); alternatively, a regen pump can be inserted here
- 6 Seal wash pump (optional)
- 7 Pump
- 8 Leak sensor
- 9 Injection valve
- 10 Column heater (optional)
- 11 Suppressor
- 12 Eluent monitor (optional)



Dionex Inuvion Flow schematic



Learn more at thermofisher.com/inuvionsupport

General Laboratory Equipment – Not For Diagnostic Procedures © 2023 Thermo Fisher Scientific Inc. All rights reserved. All trademarks are the property of Thermo Fisher Scientific and its subsidiaries unless otherwise specified. This information is presented as an example of the capabilities of Thermo Fisher Scientific products. It is not intended to encourage use of these products in any manner that might infringe the intellectual property rights of others. Specifications, terms and pricing are subject to change. Not all products are available in all countries. Please consult your local sales representative for details. XX002454 0823

thermo scientific