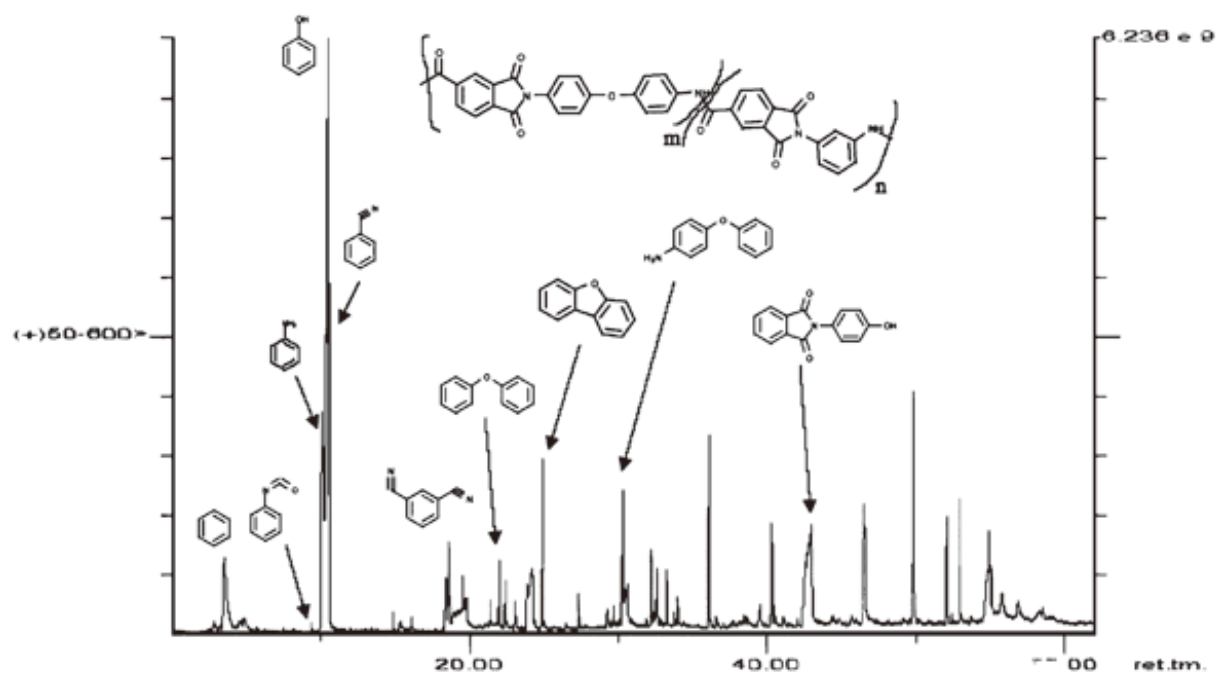


InertSearch™ for GC

InertCap® Applications

Polyamideimide

Data No. GA042-0000



System : GC/MS OPTIC3
Column : InertCap 5MS/Sil
0.25mm I.D. x 30m df=0.25µm
Column Temp. : 35°C (5min) → 10°C/min → 310°C (15min)
Injection : DMI
40°C → 16°C/sec → 600°C
Detection : MS Scan
Sample : Polyamideimide