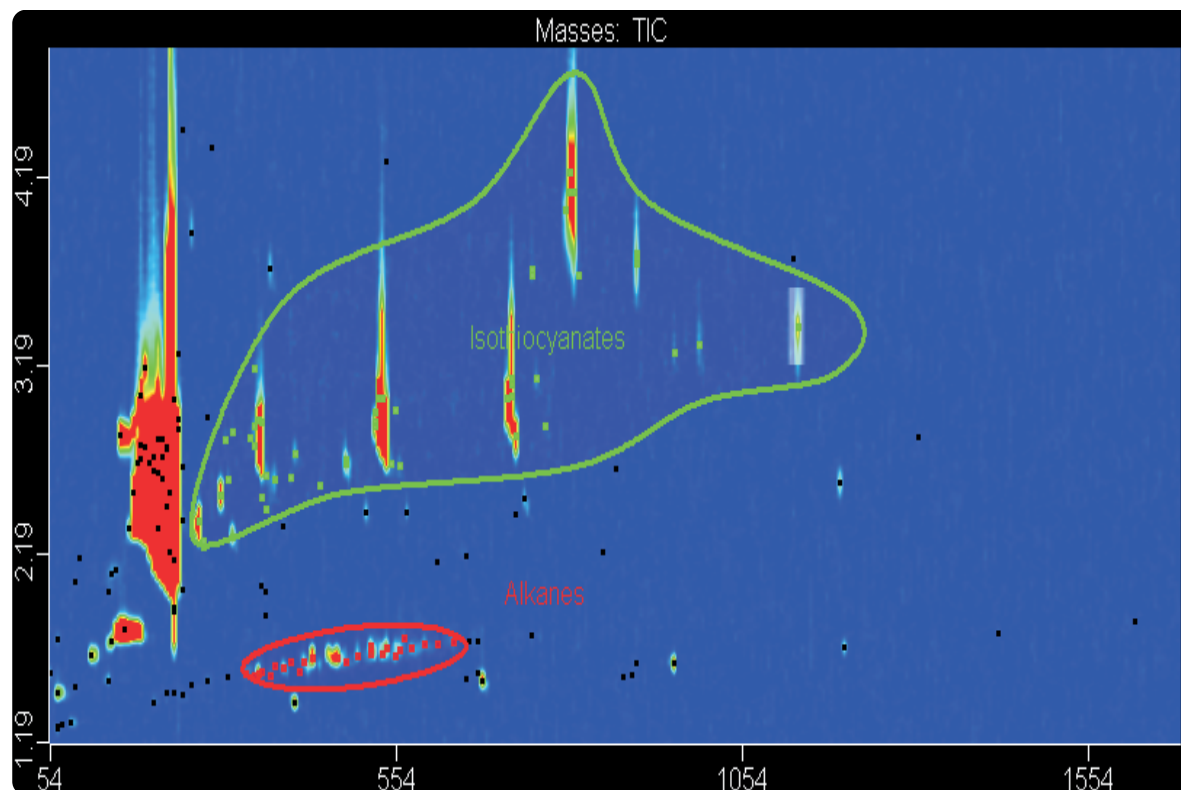


Analysis of Wasabi Paste by SPME-GCxGC-TOFMS

Life Science and Chemical Analysis Centre
LECO Corporation, Saint Joseph, Michigan USA



A sample of Wasabi paste was analyzed by SPME-GCxGC-TOFMS. Over 240 components were detected at a S/N of 50, including several isothiocyanates which are the components responsible for the pungent aroma and flavor.

Columns:

10 m x 0.18 mm x 0.2 μ m Rtx-5
0.5 m x 0.1 mm x 0.1 μ m DB-1701

TOFMS:

35 to 500 m/z @ 200 spectra/s

For questions on this analysis
e-mail us at: life_science@leco.com

For a complete listing of snapshots
and application notes visit us on the
web at www.leco.com

