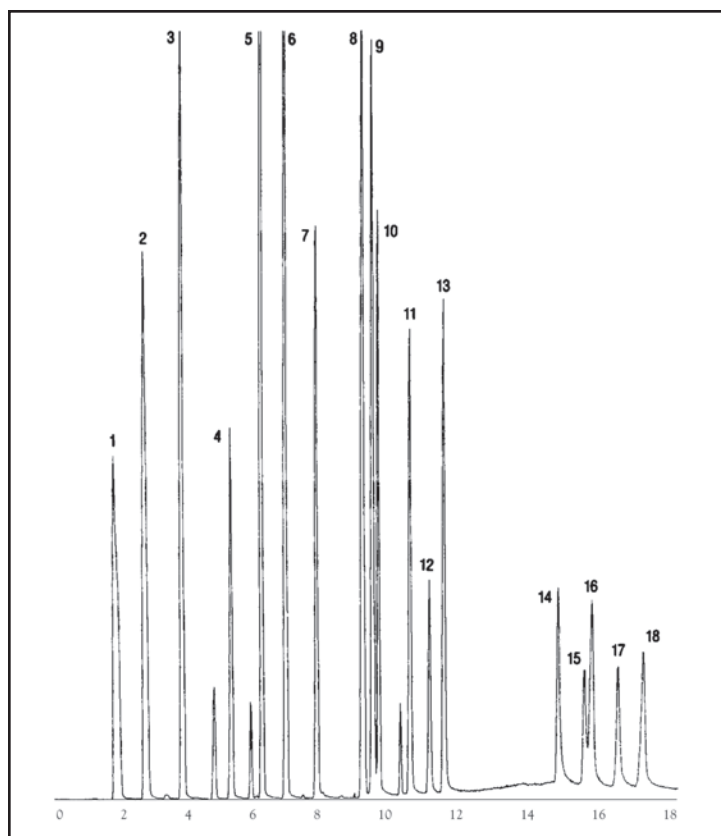


# GC CAPILLARY COLUMN APPLICATIONS: CLINICAL/TOXOLOGICAL

## Schedule IV Depressants

COLUMN: 007-1701,  
(14% Cyanopropylphenyl)  
Methylpolysiloxane  
30M. x 0.25mm I.D. x  
0.25µm film  
Cat. No.: 007-1701-30-0.25F  
Temperature: 145°(12°/min.) -290°C  
Injector: 250°C  
Detector: MSD  
Carrier Gas: 28 cm/sec., Helium

1. Ethosuximide
2. α-Methyl-α-Propylsuccinimide
3. Metharbital
4. Barbitol
5. Mephseximide
6. Phensuximide
7. n-Normethsuximide
8. Mephentyoin
9. Ethotoin
10. Mephobarbital
11. PEMA
12. Phenobarbital
13. Methyl PEMA
14. 10,11-Dihydrocarbamazipine
15. Carbamazipine
16. Primidone
17. 5,5'-Diphenylhydantoin
18. 4-Methylprimidone



PO Box 3881, Woodbridge, CT 06525 • (203) 393-3112 • FAX (203) 393-0391  
TOLLFREE: 800-275-7033 • E-MAIL: [tech@quadrexcorp.com](mailto:tech@quadrexcorp.com)