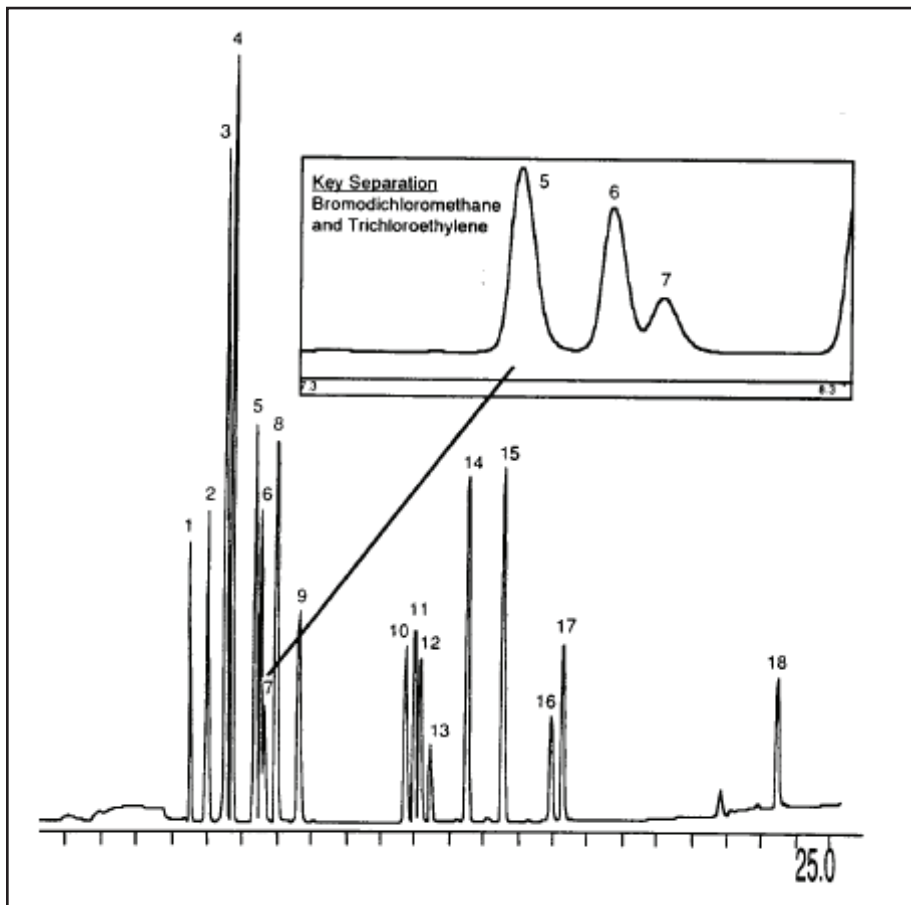


# GC CAPILLARY COLUMN APPLICATIONS: ENVIRONMENTAL

## Safflower Oil

COLUMN: 400-65HT, (65% Phenyl)  
Methylpolysiloxane -  
Aluminum-Clad  
15M. x 0.25mm I.D. x  
0.1µm film  
Cat. No.: 400-65HT-15-0.1F  
Temperature: 350° (0.5 min. hold)  
(1°/min.) - 365°C  
Injector: 400°C  
Detector: 400°C, FID  
Carrier Gas: 35 cm/sec., Helium

1. chloroform
2. 1,1,1-trichloroethane
3. carbon tetrachloride
4. trichloroacetonitrile
5. dichloroacetonitrile
6. bromodichloromethane
7. trichloroethylene
8. chloral hydrate
9. 1,1-dichloropropanone-2
10. chloropicrin
11. dibromochloromethane
12. bromochloroacetonitrile
13. 1,2-dibromoethane (EDB)
14. tetrachloroethylene
15. 1,1,1-tetrachloropropane
16. bromoform
17. dibromoacetonitrile
18. 1,2-dibromo-3-chloropropane (DBCP)



PO Box 3881, Woodbridge, CT 06525 • (203) 393-3112 • FAX (203) 393-0391  
TOLLFREE: 800-275-7033 • E-MAIL: tech@quadrexcorp.com