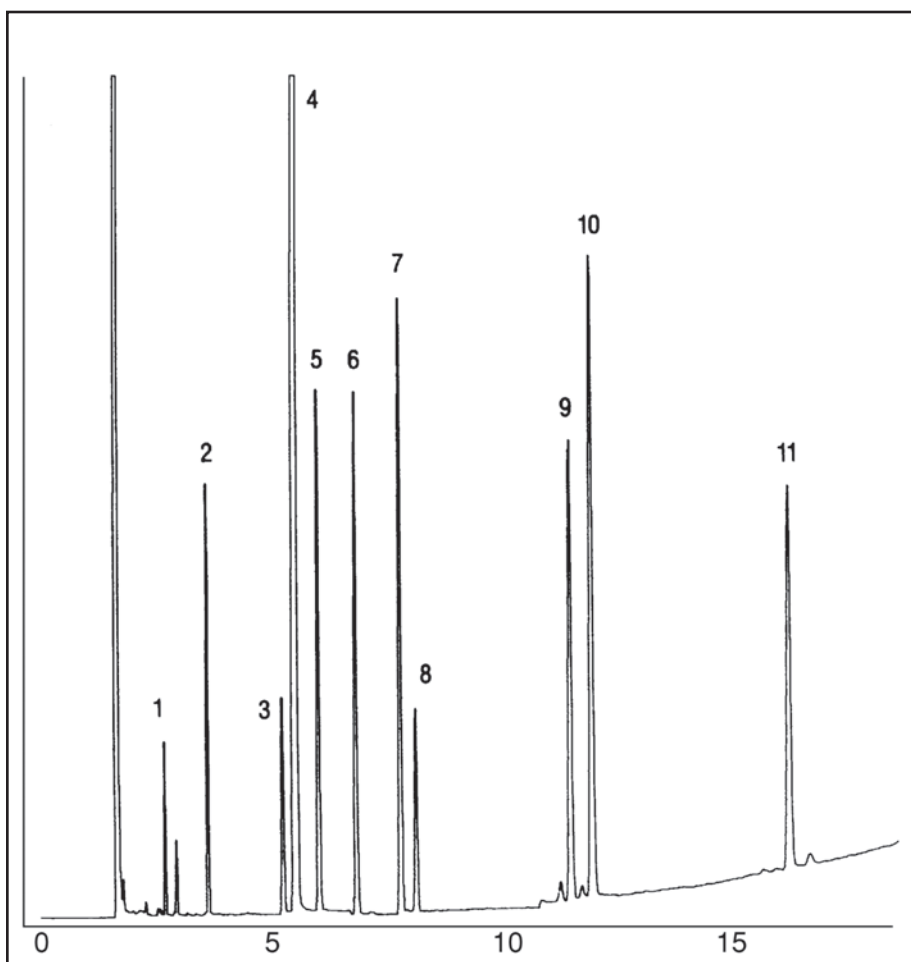


# GC CAPILLARY COLUMN APPLICATIONS: FAMES

## Rapeseed Oil

COLUMN: 007-CW, Bonded  
Carbowax  
25M. x 0.25mm I.D. x  
0.25 $\mu$ m film  
Cat. No.: 007-CW-25-0.25F  
Temperature: 200° (2°/min.) - 240°C  
Injector: 250°C  
Detector: 250°C, FID  
Carrier Gas: 28 cm/sec, Helium

1. C-14:0
2. C-16:0
3. C-18:0
4. C-18:1
5. C-18:2
6. C-18:3
7. C-20:0
8. C-20:1
9. C-22:0
10. C-22:1
11. C-24:0



PO Box 3881, Woodbridge, CT 06525 • (203) 393-3112 • FAX (203) 393-0391  
TOLLFREE: 800-275-7033 • E-MAIL: [tech@quadrexcorp.com](mailto:tech@quadrexcorp.com)