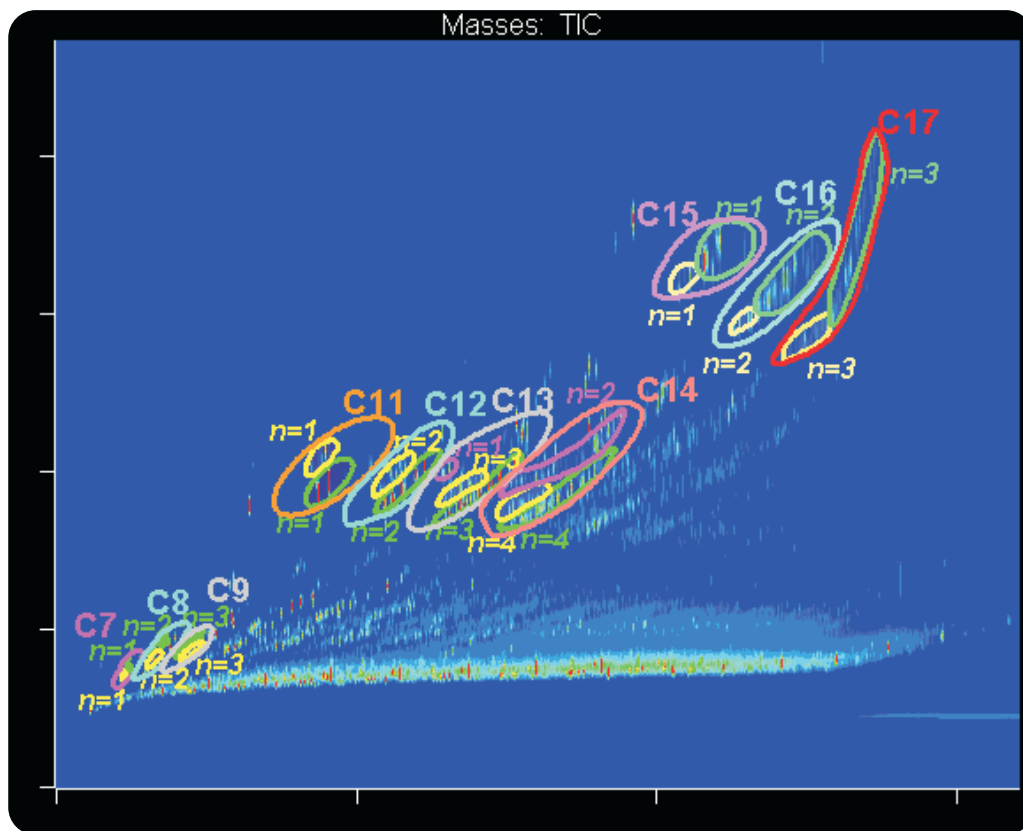


# GCxGC-FID Analysis of Pump Diesel with Classifications for alkylated benzenes, naphthalenes, thiophenes and anthracenes

Life Science and Chemical Analysis Centre  
LECO Corporation, Saint Joseph, Michigan USA



**GCxGC-FID analysis of Pump Diesel processed with Classifications for alkylations and multiple benzene rings from C7 - C17.**

#### Columns:

50 m x 0.20 mm x 0.50  $\mu$ m DB-PONA  
1.7 m x 0.10 mm x 0.10  $\mu$ m DB-WAX

#### Detector:

FID

For questions on this analysis  
e-mail us at: [life\\_science@leco.com](mailto:life_science@leco.com)

For a complete listing of snapshots  
and application notes visit us on the  
web at [www.leco.com](http://www.leco.com)

