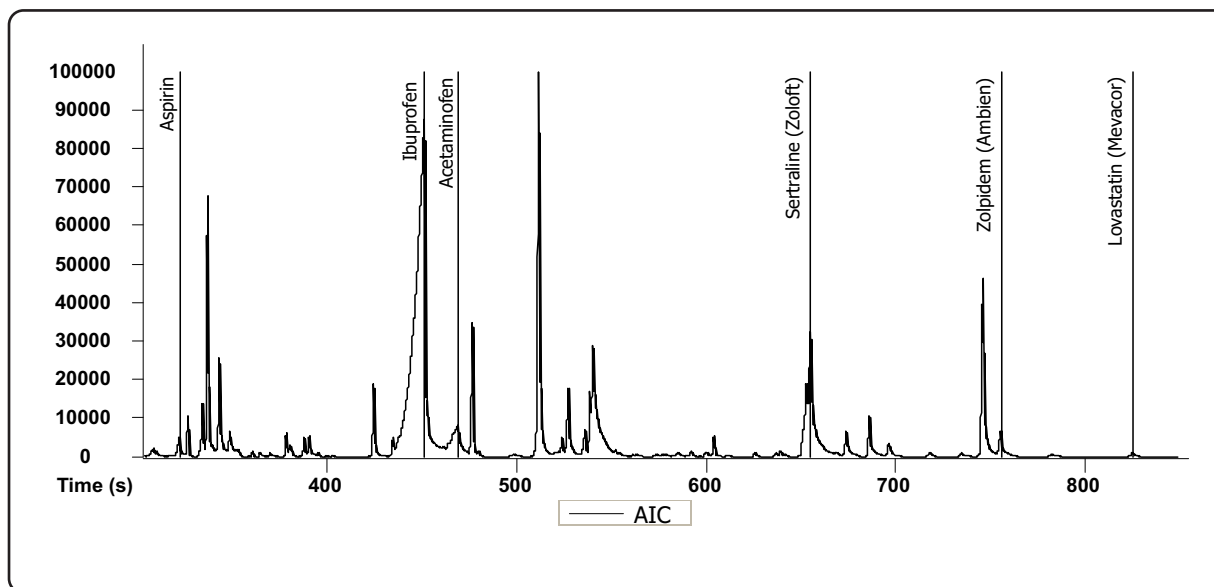


Analysis of Water Spiked with Pharmaceuticals by SPME GC-TOFMS

Life Science and Chemical Analysis Centre
LECO Corporation, Saint Joseph, Michigan USA



Automated SPME-GC-TOFMS was used to detect pharmaceuticals which were spiked into water.

Column:

10 m x 0.18 mm x 0.18 μ m Rxi-5ms

TOFMS:

40 to 800 m/z @ 20 spectra/s

For questions on this analysis e-mail us at:
life_science@leco.com

For a complete listing of snapshots and application notes visit us on the web at www.leco.com

