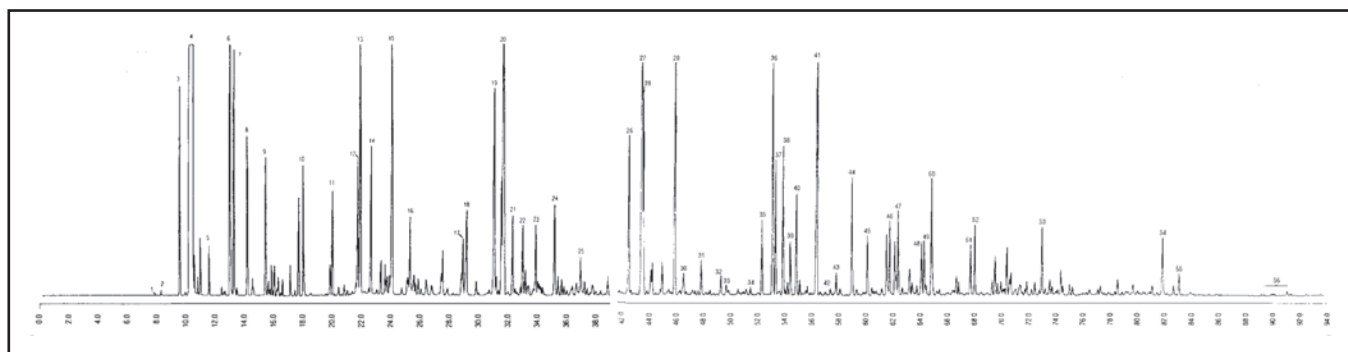


# GC CAPILLARY COLUMN APPLICATIONS: PETROCHEMICAL

## Super Unleaded Gasoline

COLUMN: 007-1,  
Dimethylpolysiloxane  
100M. x 0.25mm I.D. x  
0.5µm film  
Cat. No.: 007-1-100-0.5F  
Temperature: 35° (15.0 min. hold)  
(2°/min.) - 200°C hold  
Injector: 200°C  
Detector: 225°C, FID  
Carrier Gas: 22.8 cm/sec., Helium

- |                         |                            |                             |                                 |
|-------------------------|----------------------------|-----------------------------|---------------------------------|
| 1. isobutane            | 15. 2,2,4-trimethylpentane | 29. o-xylene                | 43. sec-butylbenzene            |
| 2. butane               | 16. heptane                | 30. 1-nonene                | 44. 1,2,3-trimethylbenzene      |
| 3. isopentane           | 17. 2,5-dimethylhexane     | 31. nonane                  | 45. indane                      |
| 4. pentane              | 18. 2,4-dimethylhexane     | 32. isopropylbenzene        | 46. 1,3-diethylbenzene          |
| 5. 2,2-dimethylbutane   | 19. 2,3,4-trimethylpentane | 33. 3,3,5-trimethylheptane  | 47. butylbenzene                |
| 6. 2,3-dimethylbutane   | 20. toluene                | 34. 2,4,5-trimethylheptane  | 48. 1,4-dimethyl-2-ethylbenzene |
| 7. 2-methylpentane      | 21. 2,3-dimethylhexane     | 35. propylbenzene           | 49. 1,3-dimethyl-4-ethylbenzene |
| 8. 3-methylpentane      | 22. 2-methylheptane        | 36. 1-methyl-3-ethylbenzene | 50. 1,2-dimethyl-4-ethylbenzene |
| 9. hexane               | 23. 3-methylheptane        | 37. 1-methyl-4-ethylbenzene | 51. 1,2,4,5-tetramethylbenzene  |
| 10. 2,4-dimethylpentane | 24. 2-methyl-1-heptane     | 38. 1,3,5-trimethylbenzene  | 52. 1,2,3,5-tetramethylbenzene  |
| 11. benzene             | 25. octane                 | 39. 3,3,4-trimethylheptane  | 53. naphthalene                 |
| 12. 2,3-dimethylpentane | 26. ethylbenzene           | 40. 1-methyl-2-ethylbenzene | 54. 2-methylnaphthalene         |
| 13. 2-methylhexane      | 27. m-xylene               | 41. 1,2,4-trimethylbenzene  | 55. 1-methylnaphthalene         |
| 14. 3-methylhexane      | 28. p-xylene               | 42. isobutylbenzene         | 56. dimethylnaphthalenes        |



PO Box 3881, Woodbridge, CT 06525 • (203) 393-3112 • FAX (203) 393-0391  
TOLLFREE: 800-275-7033 • E-MAIL: [tech@quadrexcorp.com](mailto:tech@quadrexcorp.com)