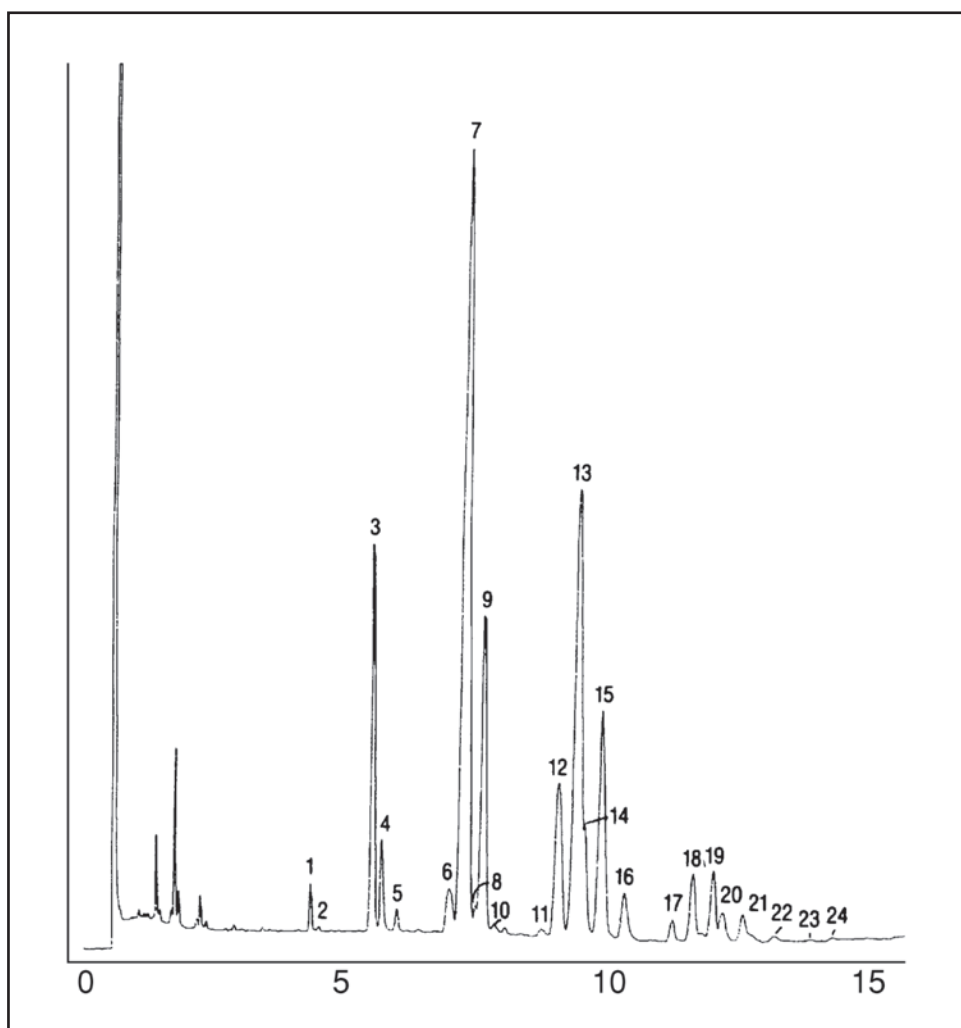


GC CAPILLARY COLUMN APPLICATIONS: TRIGLYCERIDES

Palm Oil

COLUMN: 007-65HT (65% Phenyl)
Methylpolysiloxane 15M. x
0.25mm I.D. x 0.1µm film
Cat. No.: 400-65HT-15-0.1F
Temperature: 340° (1°/min.) - 365°C
Injector: 400°C
Detector: 400°C, FID
Carrier Gas: 35 cm/sec., Helium

1. mpp
2. mom
3. ppp
4. mop
5. mlp
6. pps
7. pop
8. moo
9. plp
10. mlo
11. pss
12. pcs
13. poo
14. pls
15. plo
16. pll
17. sos
18. soo
19. ooo
20. slo
21. olo
22. oll
23. soa
24. aoo



PO Box 3881, Woodbridge, CT 06525 • (203) 393-3112 • FAX (203) 393-0391
TOLLFREE: 800-275-7033 • E-MAIL: tech@quadrexcorp.com