

# Advanced Capillary Column Technology Improves Analysis of Volatile Amines

Jaap de Zeeuw\*, Ron Stricek, and Gary Stidsen, Restek Corporation

110 Benner Circle, Bellefonte, PA, US \* Restek Corporation, Weerhaan 9, Middelburg, The Netherlands

Tel: 1-814-353-1300 (outside U.S.) or 1-800-356-1688 (inside U.S.) • Email: support@restek.com • Web: www.restek.com

Short-chain volatile amines, such as monomethylamine, diethylamine, and triethylamine, are of great importance in the petrochemical industry and play a critical role inhibiting corrosion. Volatile amines are used as gas-scrubbing agents to remove hydrogen sulphide from refinery and natural gas streams, as well as for removing carbon dioxide during the production of ammonia. While accurate data on volatile amine content is vital for optimising the manufacture of compounds of many different classes, gas chromatographic analysis can be quite challenging due to their basic nature and high polarity. Because of these characteristics, amines will interact with active sites in the analytical column and along the sample pathway, resulting in broad, tailing peaks that are difficult to integrate accurately.

In order to improve chromatography for volatile amines, capillary columns must be highly inert and offer good retention and efficiency at low temperatures. In addition, they must be able to withstand tough matrices, as amines are often analysed in the presence of water, alcohol, or ammonia. Base-modified polyethylene glycol columns are one option, but they suffer from relatively poor stability and a loss of efficiency below 60°C. Siloxane columns are another option, but most commercially available siloxane-based columns for amine applications work well for pure samples, but perform poorly in the presence of tough matrices, such as water (Figure 1). Until recently, commercially available columns for the analysis of volatile amines suffered from short lifetimes and displayed poor reproducibility in amine response. A new column developed by Restek, the Rtx®-Volatile Amine column, offers improved chromatographic performance and stability.

## New Rtx®-Volatile Amine Column Produces Stable, Symmetrical Peaks

In order to assure symmetrical peaks and good reproducibility, both surface deactivation and polymer stability were considered in the development of the Rtx®-Volatile Amine capillary GC column. Proper deactivation reduces surface adsorption of short-chain amines, which improves peak shape significantly. As shown in Figure 2, highly symmetrical peaks are obtained for monomethylamine, diethylamine, and triethylamine, as well as for methanol. In addition, the film thickness was increased in order to maintain efficiency at temperatures as low as 40 °C. The stationary phase was intensively cross-linked in order to improve mechanical stability in the presence of water. The result is a new column chemistry that reliably produces good peak shape and response for volatile amines. As shown in Figure 3, even after 40 injections of amines in water, peak shapes are almost identical.

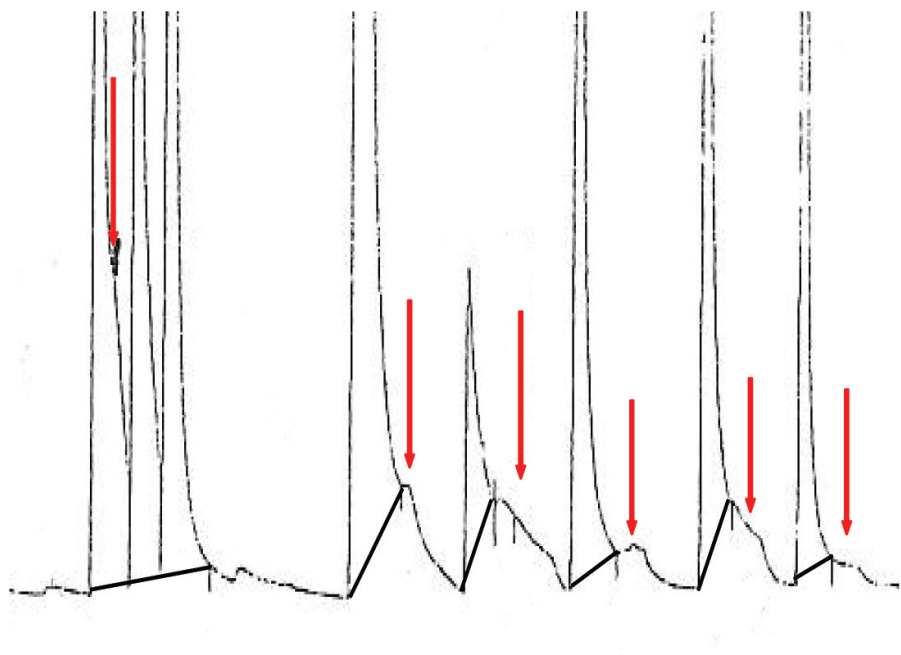


Figure 1: Short-chain volatile amines often exhibit broad, tailing peaks when analysed in water on typical volatile amine capillary columns.

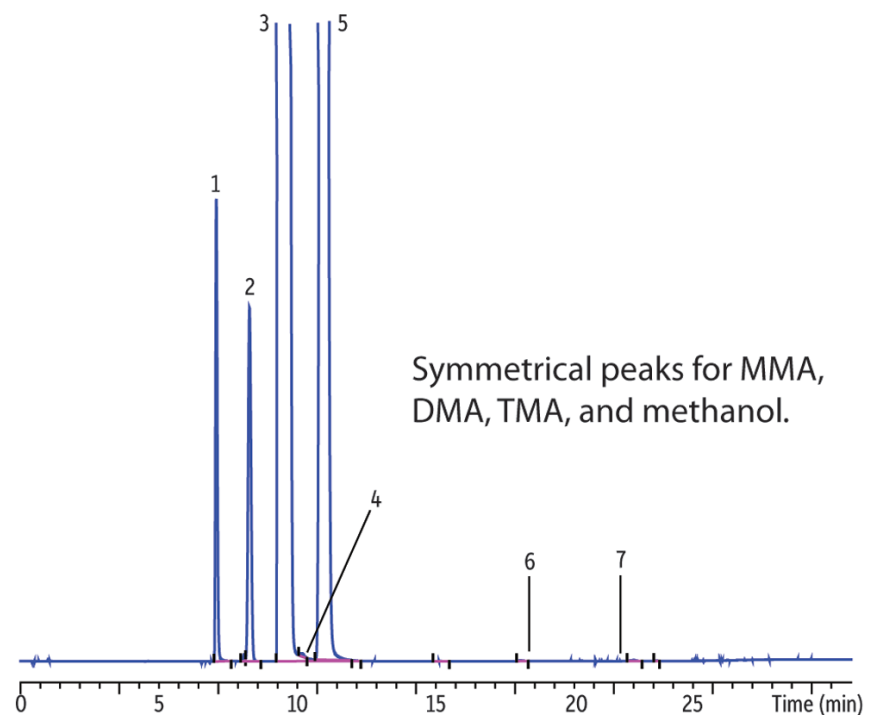


Figure 2: When analysed on new Rtx®-Volatile Amine columns, chromatography is greatly improved and symmetrical peaks are obtained for both early eluting amines and methanol.

Columns: Rtx®-Volatile Amine, 60 m x 0.32 mm ID (cat.# 18078); Sample: short-chain amines in water; Injection: 1 µL (split ratio 15:1), 220 °C; Oven: 40 °C (hold 10 min) to 250 °C at 20 °C/min (hold 10 min); Carrier gas: hydrogen, 2 mL/min, 35 cm/sec; Detector: FID @ 250 °C. Peaks: 1. Monomethylamine (MMA), 2. Methanol, 3. Dimethylamine (DMA), 4. Ethylamine, 5. Trimethylamine (TMA), 6. Dimethylethylamine, 7. Methyl-diethylamine. Acknowledgement: Gilbert Baele, Taminco (Antwerp, Belgium).

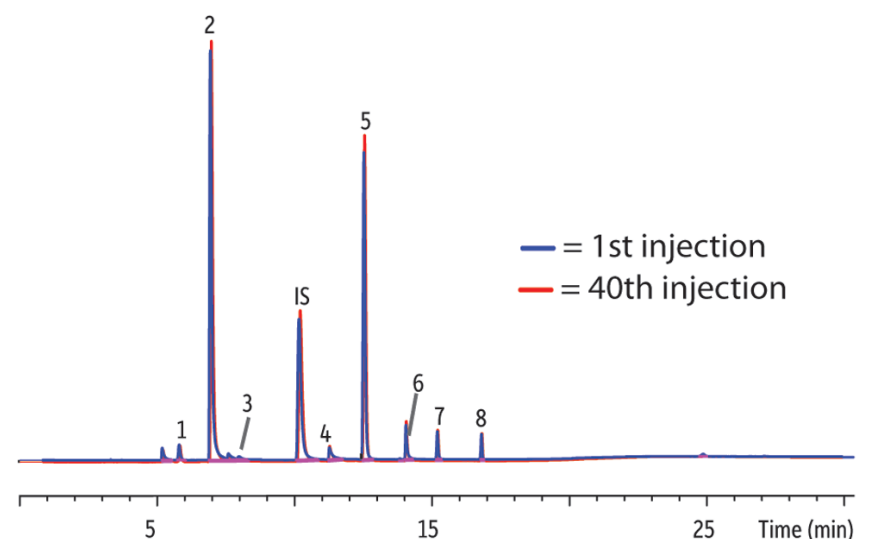


Figure 3: Peak shape for amine compounds is virtually unchanged, even after 40 injections.

Columns: Rtx®-Volatile Amine, 60 m x 0.32 mm ID (cat.# 18078); Sample: short-chain amines in water; Injection: 1 µL (split ratio 15:1), 220 °C; Oven: 40 °C (hold 10 min) to 250 °C at 20 °C/min (hold 10 min); Carrier gas: hydrogen, 2 mL/min, 35 cm/sec; Detector: FID @ 250 °C. Peaks: 1. Methanol, 2. Dimethylamine, 3. Trimethylamine, 4. Methyl-ethylamine, 5. Dimethylethylamine, 6. Diethylamine, 7. Methyl-diethylamine, 8. Triethylamine. Acknowledgement: Gilbert Baele, Taminco (Antwerp, Belgium).

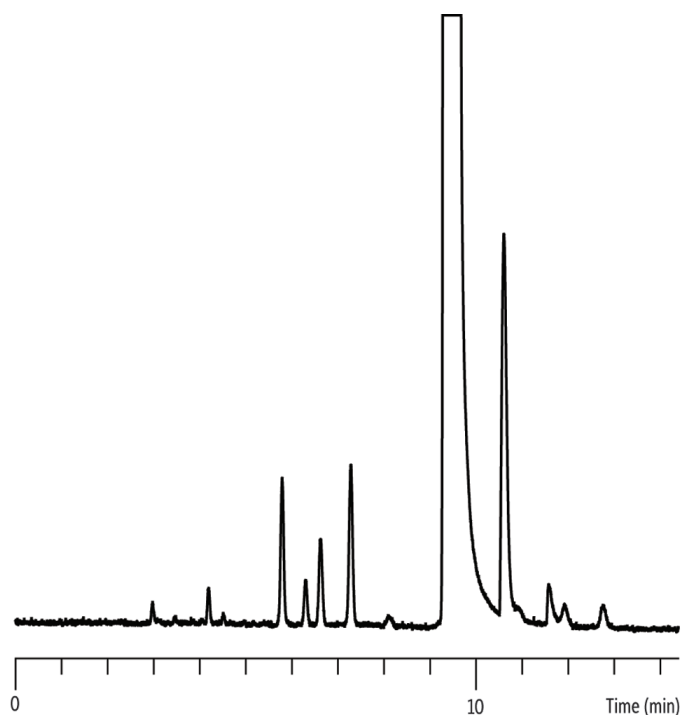


Figure 4: Impurities in pyridine.

Columns: Rtx®-Volatile Amine, 60 m x 0.32 mm ID (cat.# 18078); Sample: pyridine; Injection: 1 µL (split ratio 15:1), 250 °C; Oven: 120 °C; Carrier gas: hydrogen, 2 mL/min; Detector: FID @ 250 °C.

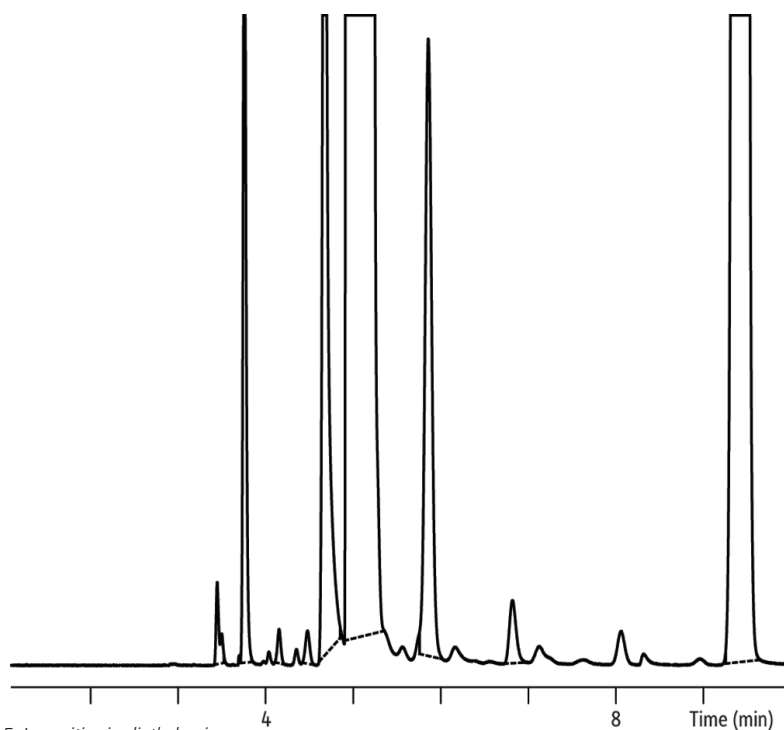


Figure 5: Impurities in diethylamine.

See Figure 4 for conditions.

## Practical Solutions for Analysing Volatile Amines

The strong dipole in the basic amino group is what causes the interactions with the surface silanols that result in nonlinear adsorption effects. In practice, derivatisation can be used to reduce these interactions, but it is time-consuming and can produce secondary matrix effects that alter recoveries. Derivatisation can be avoided by using an Rtx®-Volatile Amine GC column as the robust column chemistry minimises reactivity and elutes the amine compounds in sharp peaks, even in the presence of water. Priming is another technique that is often used in amine analysis. In this approach, several initial injections of a high boiling point amine are performed so that the priming amine compound reacts with any active sites and provides a systemic, but short-lived, deactivation. While, using a properly deactivated analytical column provides a better long-term solution, priming can be useful in that the priming compound can, at least temporarily, deactivate non-column parts of the sample pathway, including the injection and detection port liners.

In addition to its inertness and tolerance of aqueous matrices, the Rtx®-Volatile Amine column also offers high loadability. As shown in Figures 4-7, this column provides excellent chromatographic separations of impurities in pyridine, diethylamine, triethylamine, and isopropylamine. In addition, when analysing ammonia and water, both compounds elute as nearly symmetrical peaks (Figure 8).

## Summary

A new stationary phase for short-chain amine applications has been developed using nonpolar stabilised polysiloxane. Rtx®-Volatile Amine columns are extremely inert, assuring accuracy and sensitivity when analysing volatile amines, including free ammonia. In addition, the highly robust phase withstands repeated water injections, resulting in improved column lifetime.

## Restek Corporation

Restek is a leading developer and manufacturer of chromatography columns, standards, and accessories. We provide analysts around the world with the innovative products and services they need to monitor the quality of air, water, soil, food, pharmaceutical, chemical, and petroleum products.

www.restek.com

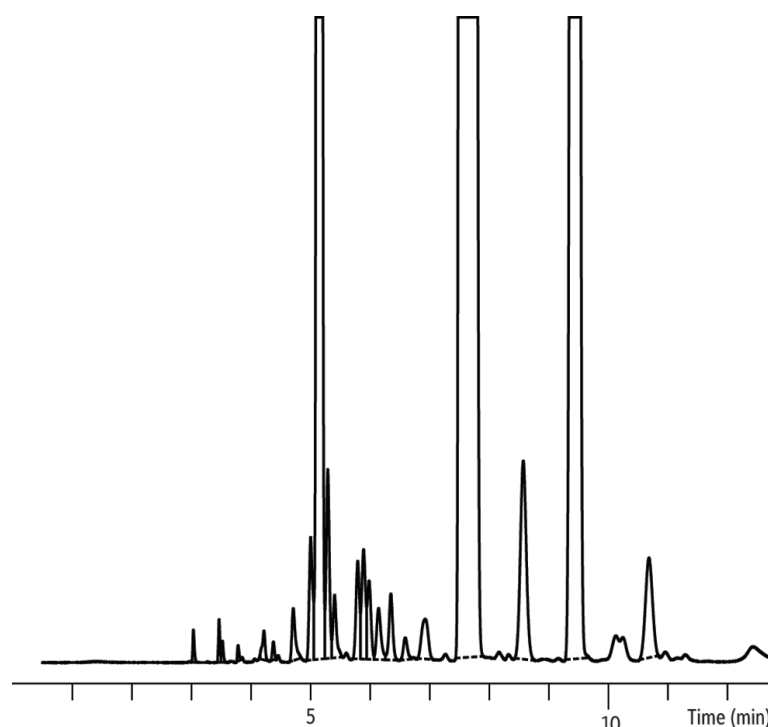


Figure 6: Impurities in triethylamine.

See Figure 4 for conditions.

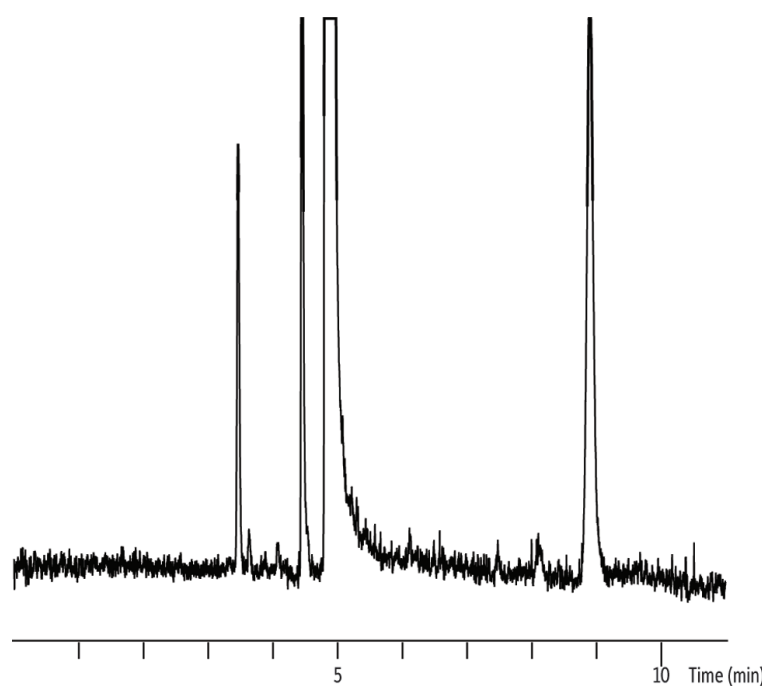


Figure 7: Impurities in isopropylamine.

See Figure 4 for conditions.

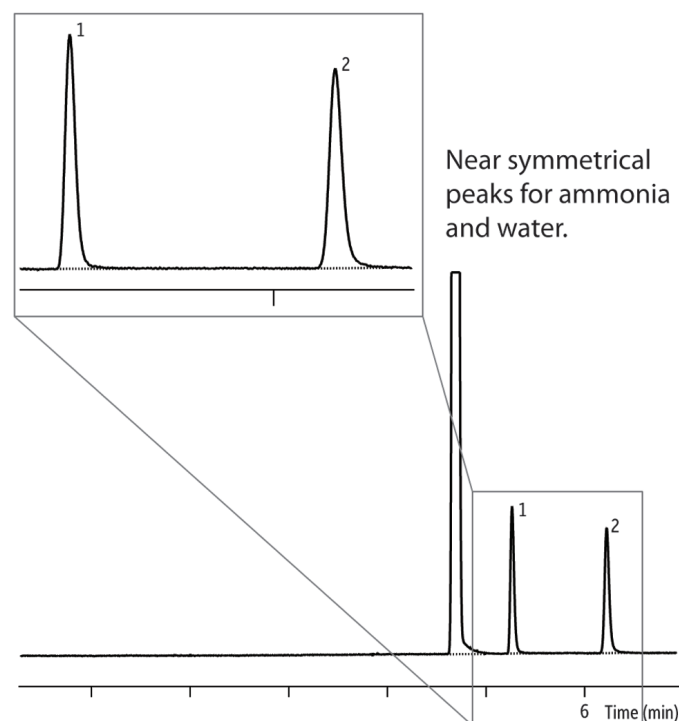


Figure 8: Ammonia and water analysed on an Rtx®-Volatile Amine column.

Columns: Rtx®-Volatile Amine, 60 m x 0.32 mm ID (cat.# 18078); Injection: split (10:1); Oven: 45 °C; Carrier gas: helium, 22 psi (151.7 kPa); Detector: µ-TCD. Peaks: 1. Ammonia, 2. Water.