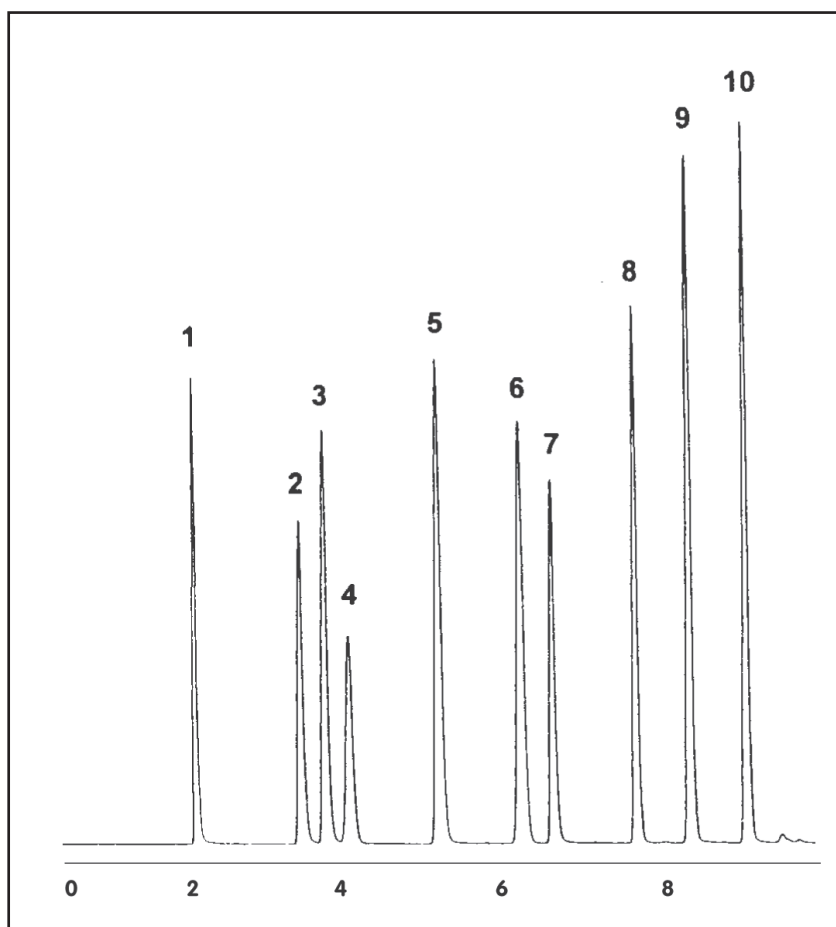


# GC CAPILLARY COLUMN APPLICATIONS: FLAVORS/FRAGRANCES

## L.M.W. Amines

COLUMN: 007-1,  
Dimethylpolysiloxane  
PHAT Phase™  
20M. x 0.18mm I.D. x  
6.0µm film  
Cat. No.: 007-1-20HS-6.0F  
Temperature: 45° (4.5 min. hold)  
(16°/min.) - 230°C  
Injector: 220°C  
Detector: 300°C , FID  
Carrier Gas: 22psi, Helium

1. methylamine
2. dimethylamine
3. ethylamine
4. trimethylamine
5. isopropylamine
6. tert-butylamine
7. propylamine
8. diethylamine
9. isobutylamine
10. butylamine



PO Box 3881, Woodbridge, CT 06525 • (203) 393-3112 • FAX (203) 393-0391  
TOLLFREE: 800-275-7033 • E-MAIL: [tech@quadrexcorp.com](mailto:tech@quadrexcorp.com)