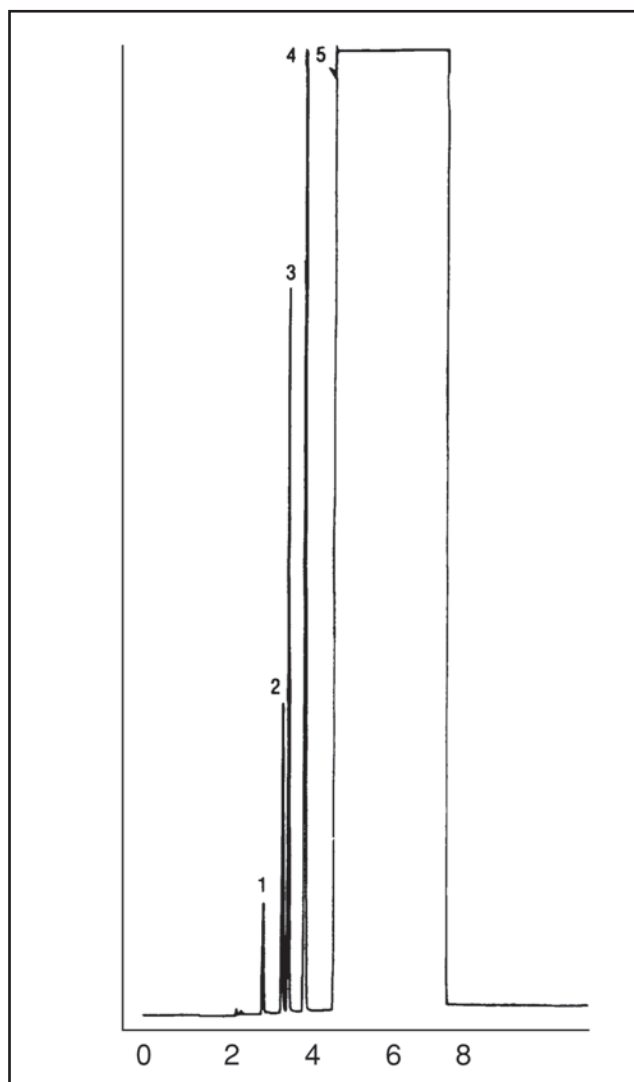


GC CAPILLARY COLUMN APPLICATIONS: ENVIRONMENTAL

EPA Method 601 Gases Only Direct Injection

COLUMN: 007-624, Cyanopropyl
Phenyl Methylpolysiloxane
30M. x 0.53mm I.D. x 3.0µm film
Cat. No.: 007-624-30V-3.0F
Temperature: 30°C Isothermal
Injector: 70°C
Detector: FID
Carrier Gas: 5 ml/min., Helium

1. dichlorodifluoromethane
2. chloromethane
3. vinyl chloride
4. bromomethane
5. methanol



PO Box 3881, Woodbridge, CT 06525 • (203) 393-3112 • FAX (203) 393-0391
TOLLFREE: 800-275-7033 • E-MAIL: tech@quadrexcorp.com