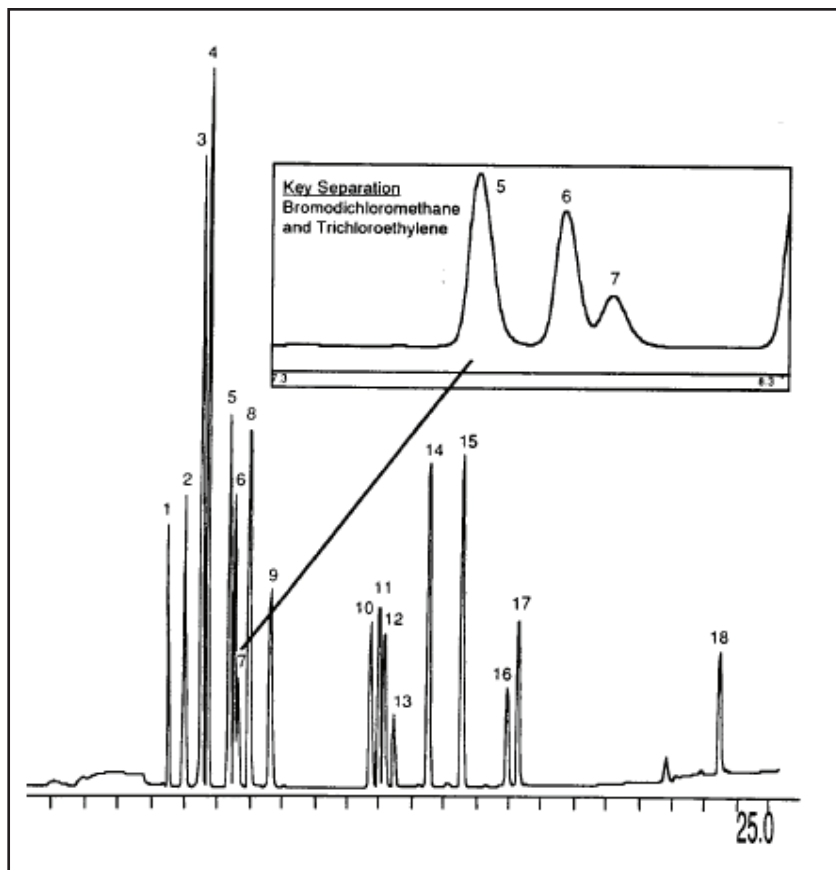


GC CAPILLARY COLUMN APPLICATIONS: ENVIRONMENTAL

EPA Method 551 Chlorination Disinfection Byproducts in Drinking Water

COLUMN: 007-1,
Dimethylpolysiloxane
30M. x 0.32mm I.D. x
0.5µm film
Cat. No.: 007-1-30W-0.5F
Temperature: 35° (10 min. hold)
(6°/min.) - 150°C
(4 min. hold)
Injector: 220°C
Detector: 300°C, ECD
Carrier Gas: 1ml/min, Helium
Injection: 2µL of 1ppb extract

1. chloroform
2. 1,1,1-trichloroethane
3. carbon tetrachloride
4. trichloroacetonitrile
5. dichloroacetonitrile
6. bromodichloromethane
7. trichloroethylene
8. chloral hydrate
9. 1,1-dichloropropanone-2
10. chloropicrin
11. dibromochloromethane
12. bromochloroacetonitrile
13. 1,2-dibromoethane (EDB)
14. tetrachloroethylene
15. 1,1,1-tetrachloropropanone
16. bromoform
17. dibromoacetonitrile
18. 1,2-dibromo-3-chloropropane (DBCP)



PO Box 3881, Woodbridge, CT 06525 • (203) 393-3112 • FAX (203) 393-0391
TOLLFREE: 800-275-7033 • E-MAIL: tech@quadrexcorp.com