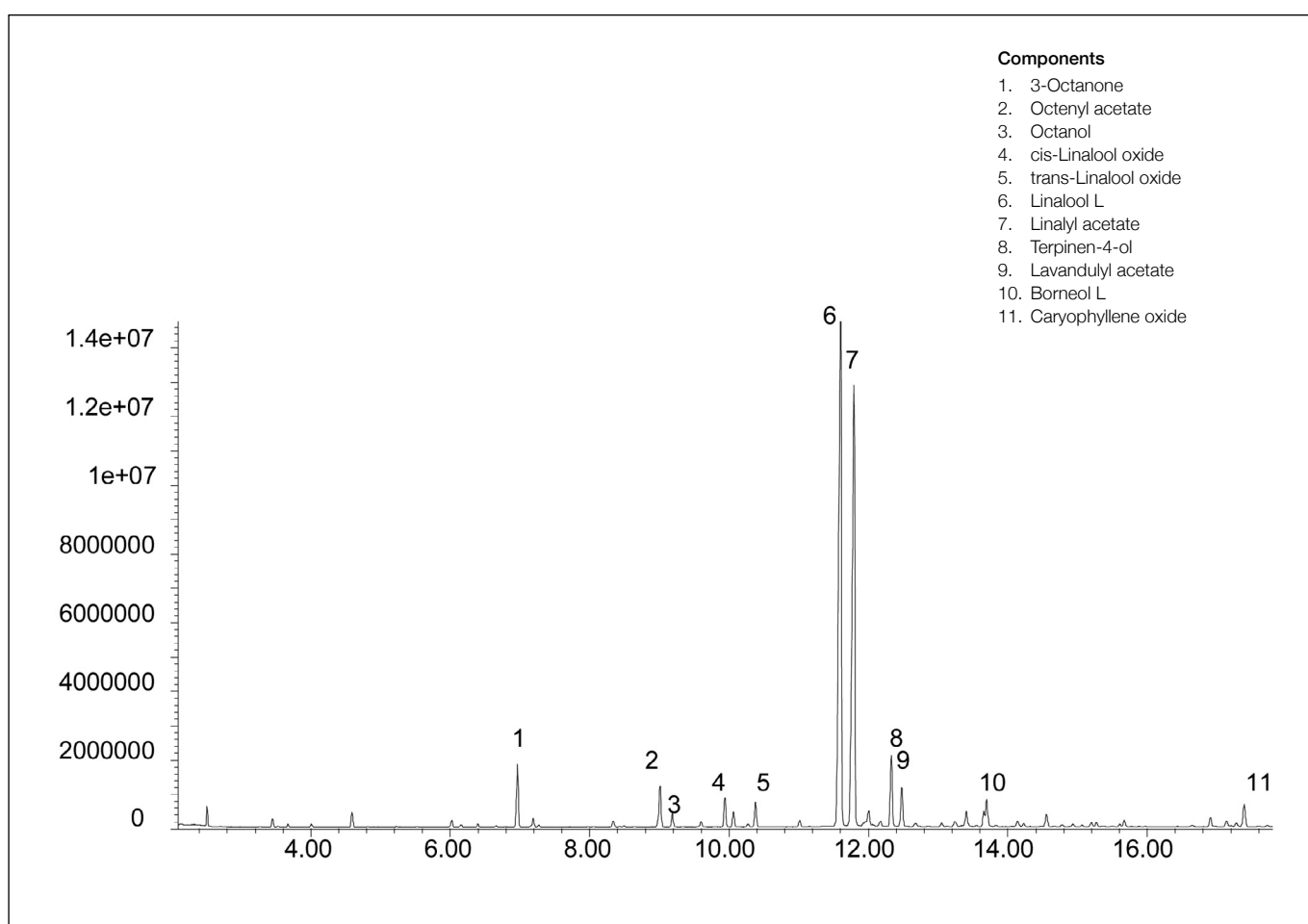


Analysis of Tasmanian lavender oil

SolGel-WAX™

Column part number	054796		
Phase	SolGel-WAX™	Carrier gas flow	1.8 mL/min
Column	30 m x 0.25 mm x 0.25 µm	Constant flow	On
Sample	Neat	Average linear velocity	35 cm/sec at 40°C
Initial temperature	40°C, 1 min	Injection mode	Split (100:1), 250°C
Rate	8°C/min	Injection volume	0.2 µL
Final temperature	220°C, 5 min	Liner type	4 mm ID single taper
Detector	MS	Full scan / SIM	Full scan 45-450
Carrier gas	He, 25.7 psi		


 For more information visit www.trajanscimed.com or contact techsupport@trajanscimed.com