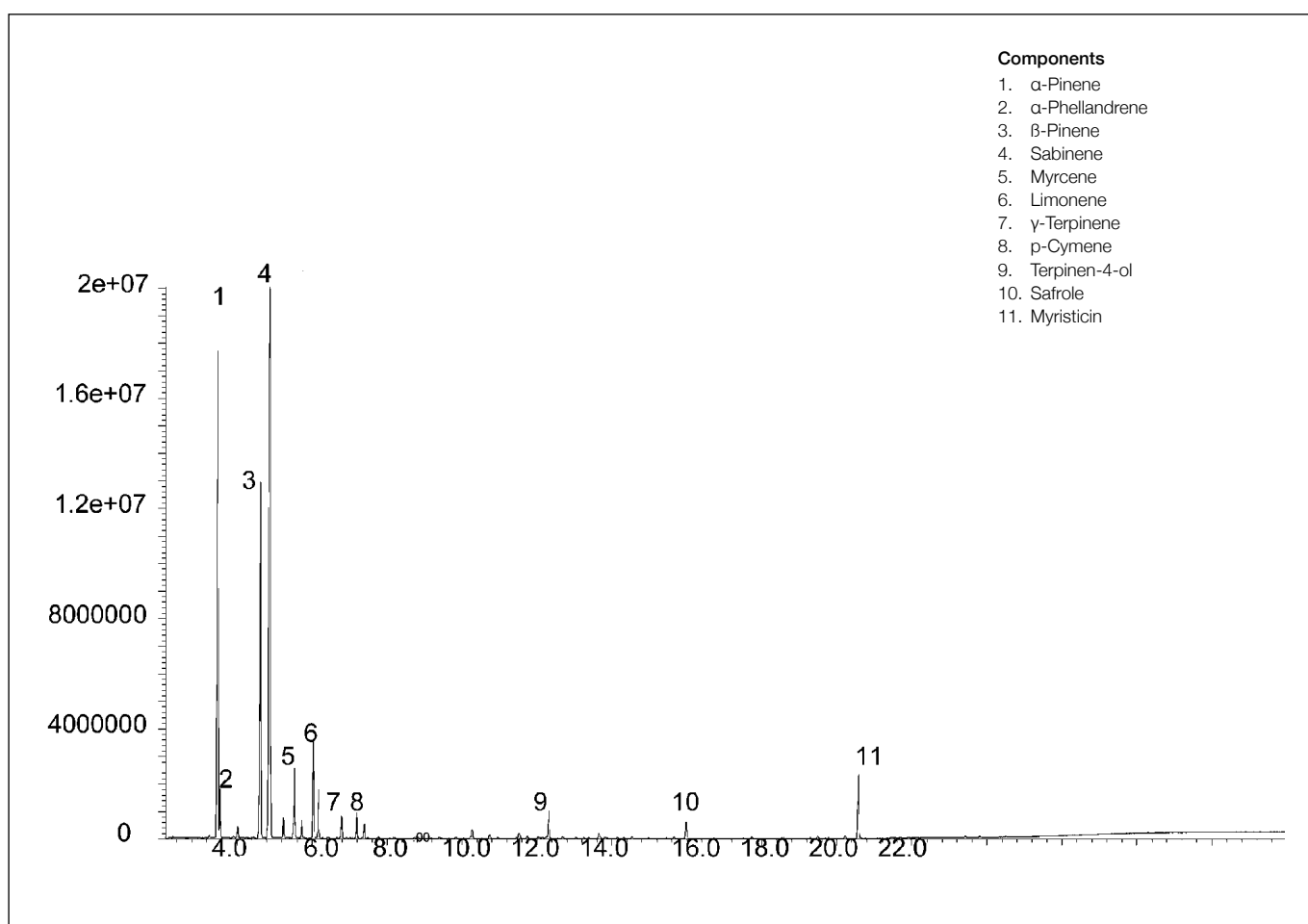


## Analysis of nutmeg oil

SolGel-WAX™

<b>Column part number</b>	<b>054796</b>		
Phase	SolGel-WAX™	Carrier gas flow	1.8 mL/min
Column	30 m x 0.25 mm x 0.25 µm	Constant flow	On
Sample	2000-3000 ppm in ethanol	Average linear velocity	35 cm/sec at 40°C
Initial temperature	40°C, 1 min	Injection mode	Split (100:1), 250°C
Rate	8°C/min	Injection volume	0.2 µL
Final temperature	220°C, 5 min	Liner type	4 mm ID single taper
Detector	MS	Full scan / SIM	Full scan 45-450
Carrier gas	He, 25.7 psi		


 For more information visit [www.trajanscimed.com](http://www.trajanscimed.com) or contact [techsupport@trajanscimed.com](mailto:techsupport@trajanscimed.com)