

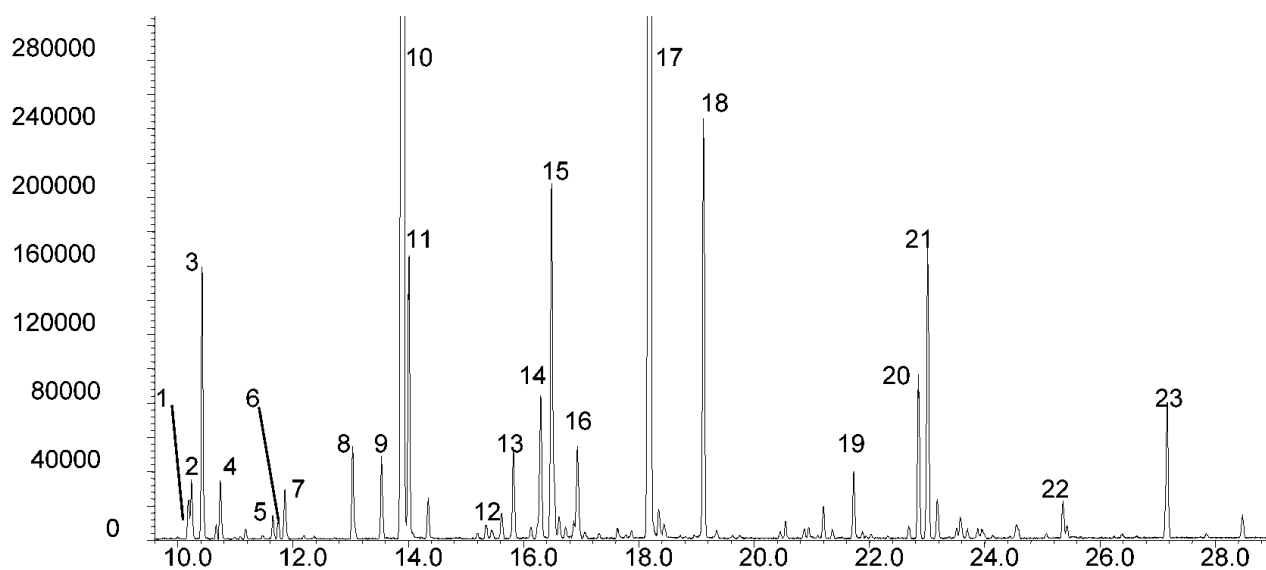
Analysis of lavender oil

BPX5

Column part number	054101		
Phase	BPX5	Carrier gas flow	1.0 mL/min
Column	30 m x 0.25 mm x 0.25 µm	Constant flow	On
Initial temperature	40°C, 1 min	Average linear velocity	36 cm/sec at 40°C
Rate	5°C/min	Injection mode	Split (200:1), 250°C
Final temperature	260°C	Purge on (split) vent flow	200 mL/min
Detector	MS	Injection volume	0.2 µL
Carrier gas	He, 7.0 psi	Liner type	4 mm ID double taper

Components

- | | | | |
|-----------------|-------------------------|----------------------|---------------------------|
| 1. β-Pinene | 7. cis-Ocimene | 13. Lavandulol | 19. Geranyl acetate |
| 2. 1-Octen-3-ol | 8. cis-Linalool oxide | 14. Borneol L | 20. α-Santalene |
| 3. 3-Octanone | 9. trans-Linalool oxide | 15. Terpinen-4-ol | 21. β-Caryophyllene |
| 4. 3-Octanol | 10. Linalool L | 16. α-Terpineol | 22. α-Cadinene |
| 5. p-Cymene | 11. Octenyl acetate | 17. Linalyl acetate | 23. α-Caryophyllene oxide |
| 6. Limonene | 12. Camphor | 18. Lavundyl acetate | |


 For more information visit www.trajanscimed.com or contact techsupport@trajanscimed.com