

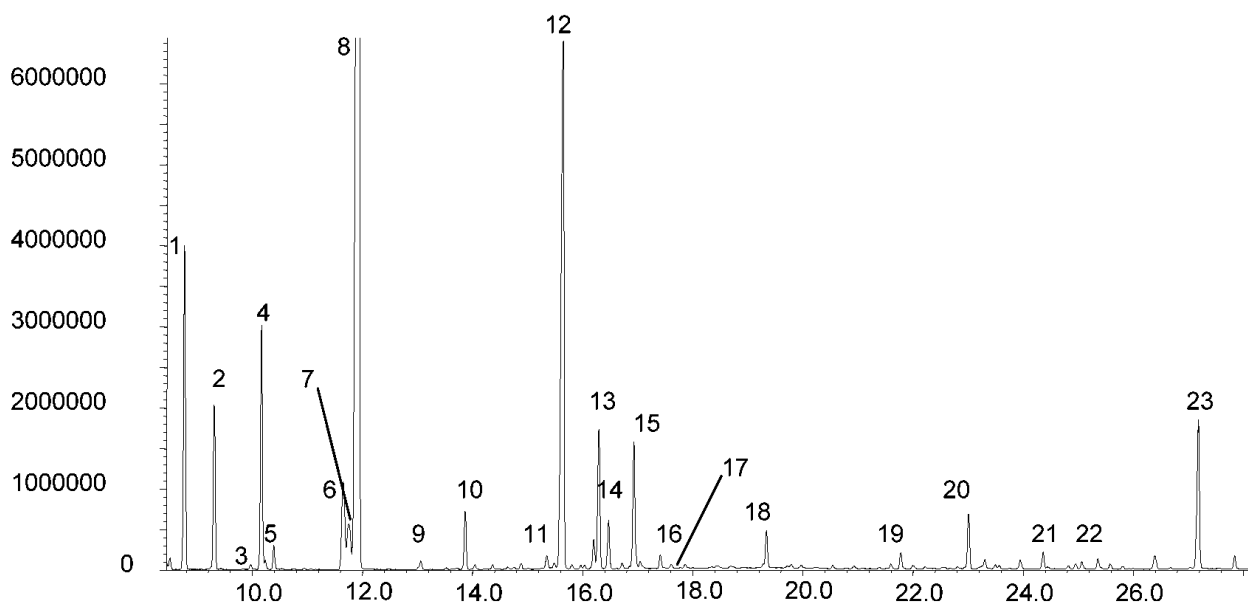
Analysis of rosemary oil

BPX5

Column part number	054101		
Phase	BPX5	Carrier gas flow	1.0 mL/min
Column	30 m x 0.25 mm x 0.25 µm	Constant flow	On
Initial temperature	40°C, 1 min	Average linear velocity	36 cm/sec at 40°C
Rate	5°C/min	Injection mode	Split (200:1), 250°C
Final temperature	260°C	Purge on (split) vent flow	200 mL/min
Detector	MS	Injection volume	0.2 µL
Carrier gas	He, 7.0 psi	Liner type	4 mm ID double taper

Components

- | | | | |
|-------------|-------------------------|-----------------------|-------------------------|
| 1. α-Pinene | 7. Limonene | 13. Borneol L | 19. α-Copaene |
| 2. Camphene | 8. 1,8-Cineole | 14. Terpinen-4-ol | 20. β-Caryophyllene |
| 3. Sabinene | 9. cis-Sabinene hydrate | 15. α-Terpineol | 21. α-Humulene |
| 4. β-Pinene | 10. Linalool L | 16. Verbenone | 22. α-Amorphene |
| 5. Myrcene | 11. Isopinocarveol | 17. trans-(+)-Carveol | 23. Caryophyllene oxide |
| 6. p-Cymene | 12. Camphor | 18. Bornyl acetate | |


 For more information visit www.trajanscimed.com or contact techsupport@trajanscimed.com