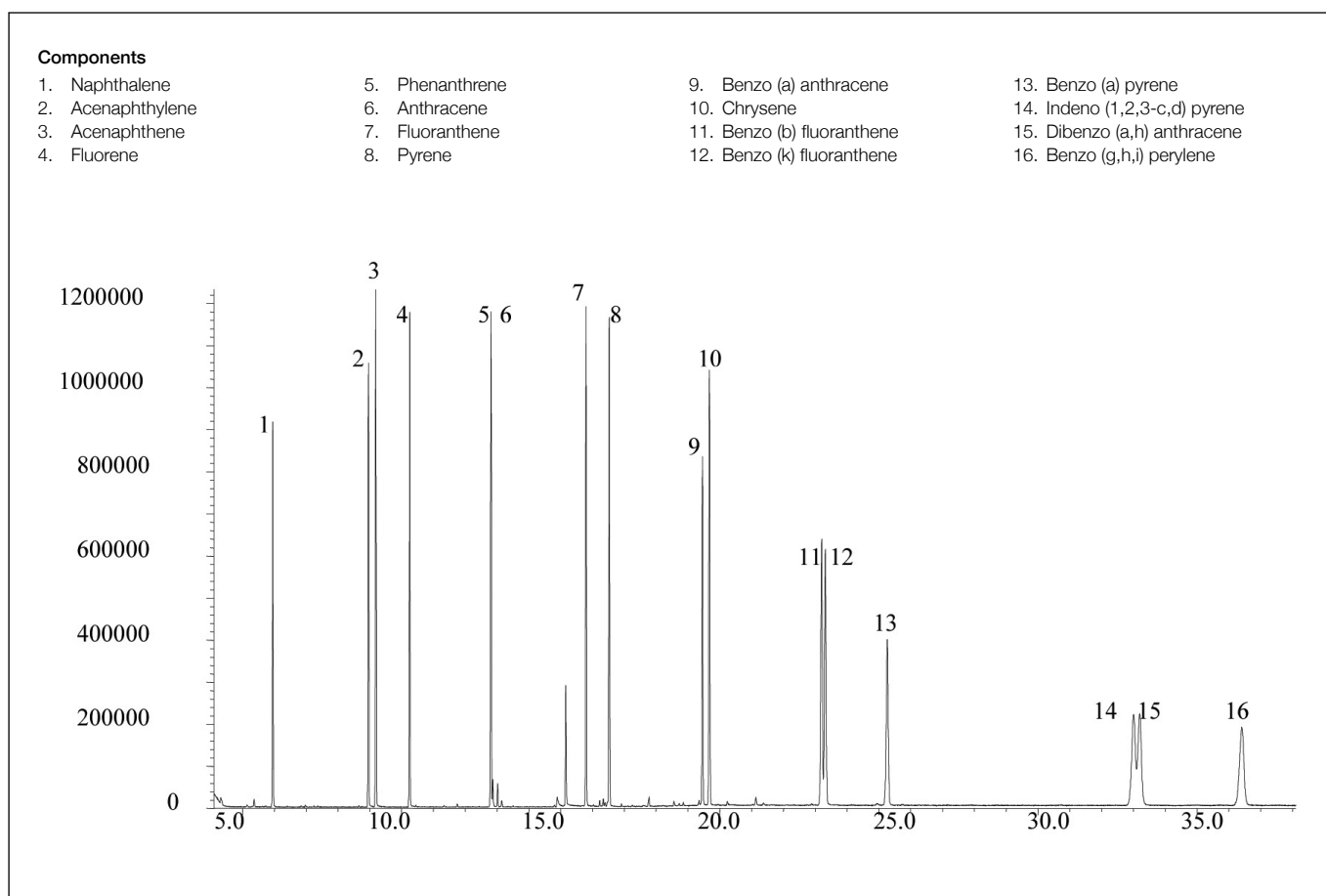


Analysis of polynuclear aromatic hydrocarbons (PAH)

BPX50

Column part number		054751	
Phase	BPX50	Constant flow	On
Column	30 m x 0.25 mm x 0.25 μ m	Average linear velocity	39 cm/sec at 65°C
Sample	10 ng/ μ L in dichloromethane	Injection mode	Splitless
Initial temperature	65°C, 0.5 min	Purge on time	0.5 min
Rate 1	25°C/min to 140°C	Purge on (split) vent flow	60 mL/min
Rate 2	10°C/min to 325°C	Injection volume	0.2 μ L
Final temperature	325°C, 15 min	Injection temperature	250°C
Detector	MS	Autosampler	No
Carrier gas	He, 9.7 psi	Liner type	4 mm ID Double Taper
Carrier gas flow	1.1 mL/min		


 For more information visit www.trajanscimed.com or contact techsupport@trajanscimed.com