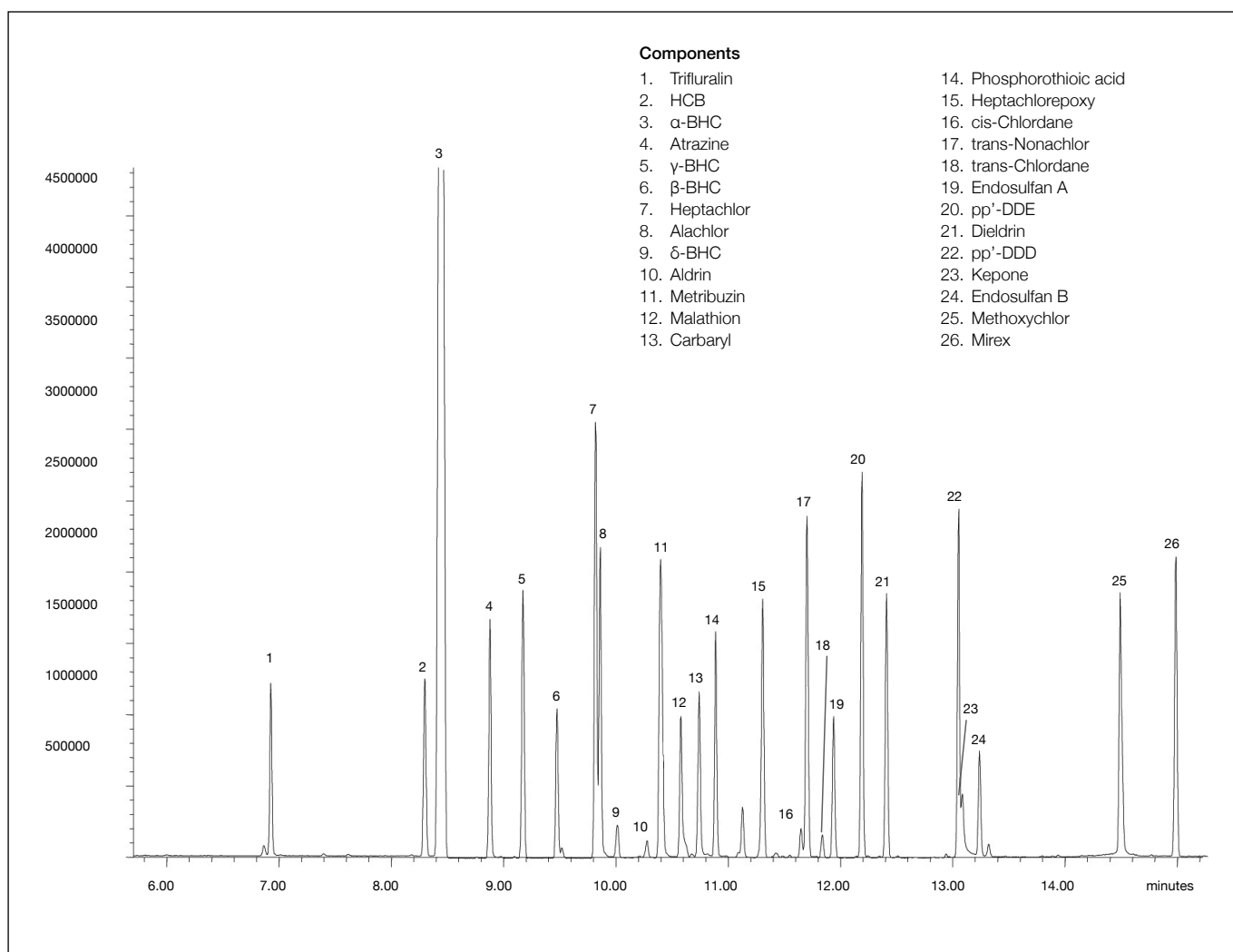


## Analysis of organochlorine pesticides

**BPX35**

<b>Column part number</b>	<b>054701</b>		
Phase	BPX35	Constant flow	On
Column	30 m x 0.25 mm x 0.25 $\mu$ m	Average linear velocity	36 cm/sec at 40°C
Sample	8081 Std (10 ng/ $\mu$ L in dichloromethane)	Mode of injection	Splitless
Initial temperature	40°C, 1 min	Purge on time	1 min
Rate 1	30°C to 190°C, 3 min	Purge on flow	60 mL/min
Rate 2	10°C to 300°C	Injection volume	1 $\mu$ L
Final temperature	300°C, 5 min	Injection temperature	250°C
Detector	MS	Autosampler	No
Carrier gas	He, 10.0 psi	Liner type	4 mm ID Double Taper
Carrier gas flow	1.3 mL/min		


 For more information visit [www.trajanscimed.com](http://www.trajanscimed.com) or contact [techsupport@trajanscimed.com](mailto:techsupport@trajanscimed.com)