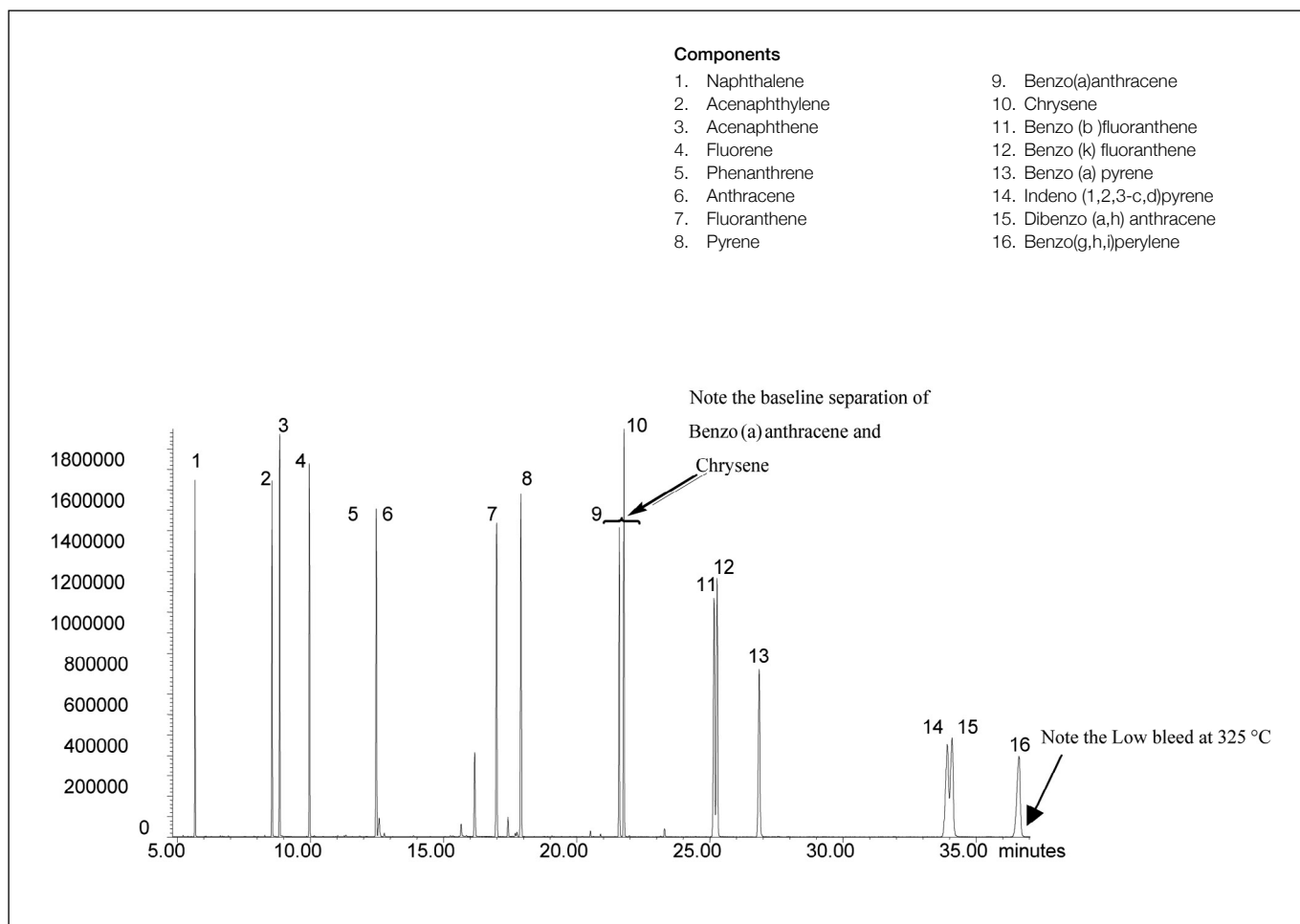


## Analysis of polynuclear aromatic hydrocarbons (PAH)

**BPX35**

<b>Column part number</b>		<b>054701</b>	
Phase	BPX35	Constant flow	On
Column	30 m x 0.25 mm x 0.25 $\mu$ m	Average linear velocity	37 cm/sec at 100°C
Sample	10 ng/ $\mu$ L in dichloromethane	Mode of injection	Splitless
Initial temperature	100°C, 0.5 min	Purge on time	0.5 min
Rate	10°C/min	Purge on flow	60 mL/min
Final temperature	325°C, 15 min	Injection volume	1 $\mu$ L
Detector	MS	Injection temperature	250°C
Carrier gas	He, 10.5 psi	Autosampler	No
Carrier gas flow	1.0 mL/min	Liner type	4 mm ID Double Taper



For more information visit [www.trajanscimed.com](http://www.trajanscimed.com) or contact [techsupport@trajanscimed.com](mailto:techsupport@trajanscimed.com)