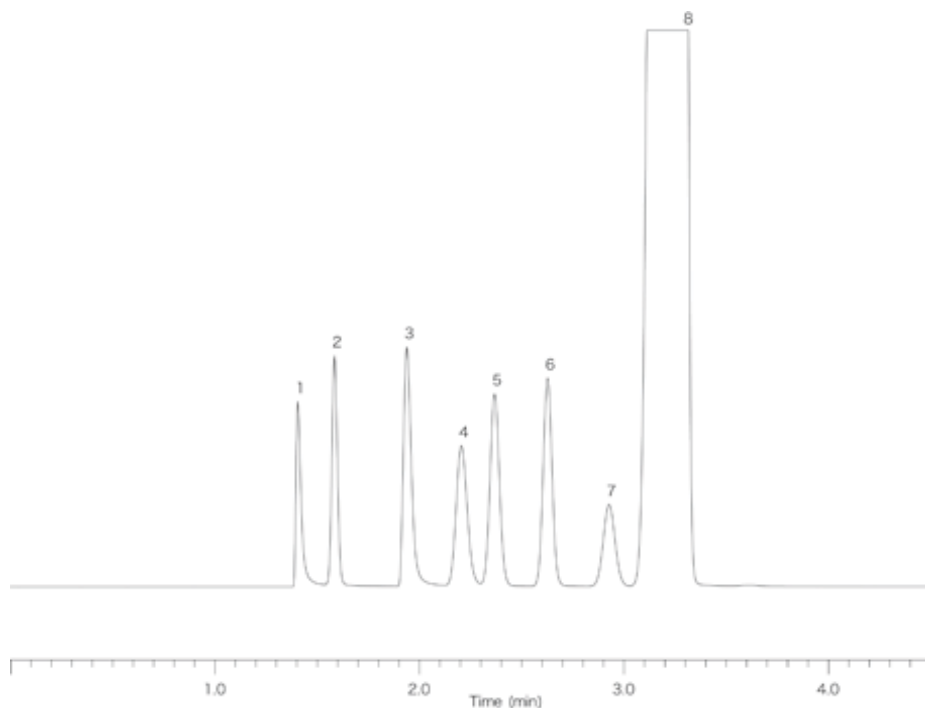


InertSearch™ for GC

InertCap® Applications

VOC & Amines

Data No. GA066-0000



System : GC/FID
Column : InertCap for Amines
0.32mmI.D. × 15m
Column Temp. : 40°C
Carrier Gas : He 30kPa
Injection : Split 1 : 50
Detection : FID

Solutes : 1. Monomethylamine (MMA)
2. Methanol
3. Dimethylamine (DMA)
4. Trimethylamine (TMA)
5. Ethanol
6. Acetonitrile
7. Acetone
8. iso-Propanol