

# SIMPLIFY AND ACCELERATE YOUR PESTICIDE ANALYSIS

## Agilent GC/MS DRS Pesticide Screener

### Eliminate the need for tedious manual method development with a fully configured and factory-tested Pesticide Screener

Based on Agilent's 5977B Series GC/MSD and 7890B GC System, our user-friendly GC/MS DRS Pesticide Screener quickly screens and quantitates large numbers of pesticides and endocrine disruptors in a single analysis. Its screening methods conform to the latest worldwide pesticide testing requirements. With inlet, column, capillary flow technology, and software tools all installed and configured in the factory, and the Screener is pre-tested for pesticide analysis—you can save time for method development.

### Screen *more* pesticides... in *less* time

Agilent's GC/MS DRS Pesticide Screener makes use of productivity-boosting GC/MS technologies that allow you to:

- Increase the number of targets screened
- Differentiate target compounds from matrix interference
- Reduce the analysis time required per sample
- Perform a complete screening and quantitation in 2-3 minutes
- Produce consistent, high-quality results immediately after installation

### The following components are included with Agilent's Pesticide Screener—saving you time and money:

- Pesticide checkout samples
- Retention Time Locked application-specific column, ensuring reliable database matching
- Video training tutorials facilitate learning of more advanced screener features
- Quick-start guide and Application Note that demonstrate how to run the method provided with the Screener
- CD-ROM with analysis methods, data files, and report



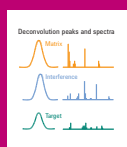
These built-in features make it *faster* and *easier* to screen large numbers of target compounds in complex matrices



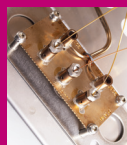
**Multimode Inlet (MMI) with large-volume injection** enhances trace-level detection and adds flexibility by including standard split/splitless capabilities.



**Retention Time Locking (RTL)** for consistent retention times after column maintenance and easy matching with the 927-compound Pesticides and Endocrine Disruptors database.



**Deconvolution Reporting Software (DRS)** for fast data review in 2-3 minutes per sample, with screening and quantitation in one run.



**Capillary Flow Technology (CFT) and backflush** shorten run times, reduce chemical background, extend column life, and reduce frequency of source cleaning.

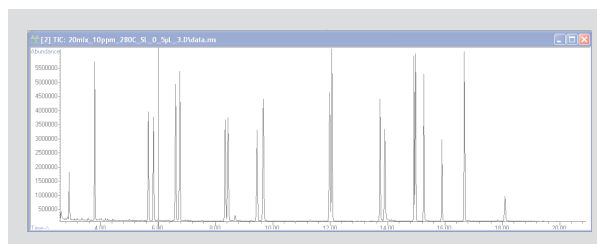
## Put your lab on the productivity fast track.

Contact your local Agilent Representative or Agilent Authorized Distributor

Call **800-227-9770** (in the U.S. or Canada) or visit [www.agilent.com/chem/food-ms-solutions](http://www.agilent.com/chem/food-ms-solutions)

This information is subject to change without notice.  
© Agilent Technologies, Inc. 2017  
Printed in U.S.A., July 31, 2017  
5990-5310EN

The Pesticide Screener will get your lab on the *fast track* to better broad-range screening



Running the pesticides checkout sample: A quick-start guide included with Agilent's GC/MS DRS Pesticide Screener shows you how to load the pesticide method, relock the method to get consistent retention times, and run the checkout sample.

MSD Deconvolution Report  
Sample Name: Checkout mix 10ppm  
Data File: C:\msdchem1\DATA\20mix\_10ppm\_280C\_SL\_0\_5ul\_3.D  
Date/Time: 3:24:06 PM Wednesday, January 20, 2010

Adjacent Peak Subtraction = 1  
Resolution = High  
Sensitivity = High  
Shape Requirements = Medium

The NIST library was searched for the components that were found in the AMDIS target library.

R.T.	Cas #	Compound Name	Amount (ng)		AMDIS		NIST	
			Chem station	AMDIS	Match	R.T. Diff sec.	Reverse Match	Hit Num.
2.668	91203	Naphthalene	0.44	0.32	77	-0.3	84	2
2.9081	62737	Dichlorvos	8.93	8.16	98	-0.9	92	1
3.078	89838	Thymol	0.06	0.05	72	2.2	66	19
3.0807	3228033	Promecarb artifact [5-isopropyl-3-methylphenol]			69	-11.0		
3.0807	98544	Phenol, p-tert-butyl-					81	1
3.7946	7786347	Mevinphos	23.91	23.2	99	-0.4	92	2
3.9880	208968	Acenaphthylene	0.08	0.07	90	0.9	83	2
5.6438	55283686	Ethalfuralin	1.44	1.34	95	0.3	92	1
5.8263	1582098	Trifluralin	6.62	6.36	96	0.9	91	1
6.5910	1912249	Atrazine	14.05	12.86	97	1.4	92	1
6.6805	139402	Propazine			71	-0.1	74	1
6.6920	319857	BHC beta isomer			55	11.0	82	5
6.7348	58899	Lindane	9.37	8.52	98	0.5	91	4
6.9259	85018	Phenanthrene			57	1.8	80	2
8.3062	5598130	Chlorpyrifos Methyl	10.6	9.46	97	1.2	92	1

A DRS Checkout Report: You can analyze your results quickly using Deconvolution Reporting Software (DRS) and the RTL Pesticides database.

## Ordering information:

Order an Agilent **5977B Series GC/MSD** along with an Agilent **7890B GC system** with one of the following configurations:

- **M7451AA Pesticide DRS Screening GC/MSD Screener**
- **M7455AA Pesticides DRS Screening GC/MSD Screener with Micro Electron Capture Detector and Flame Photometric Detector**