

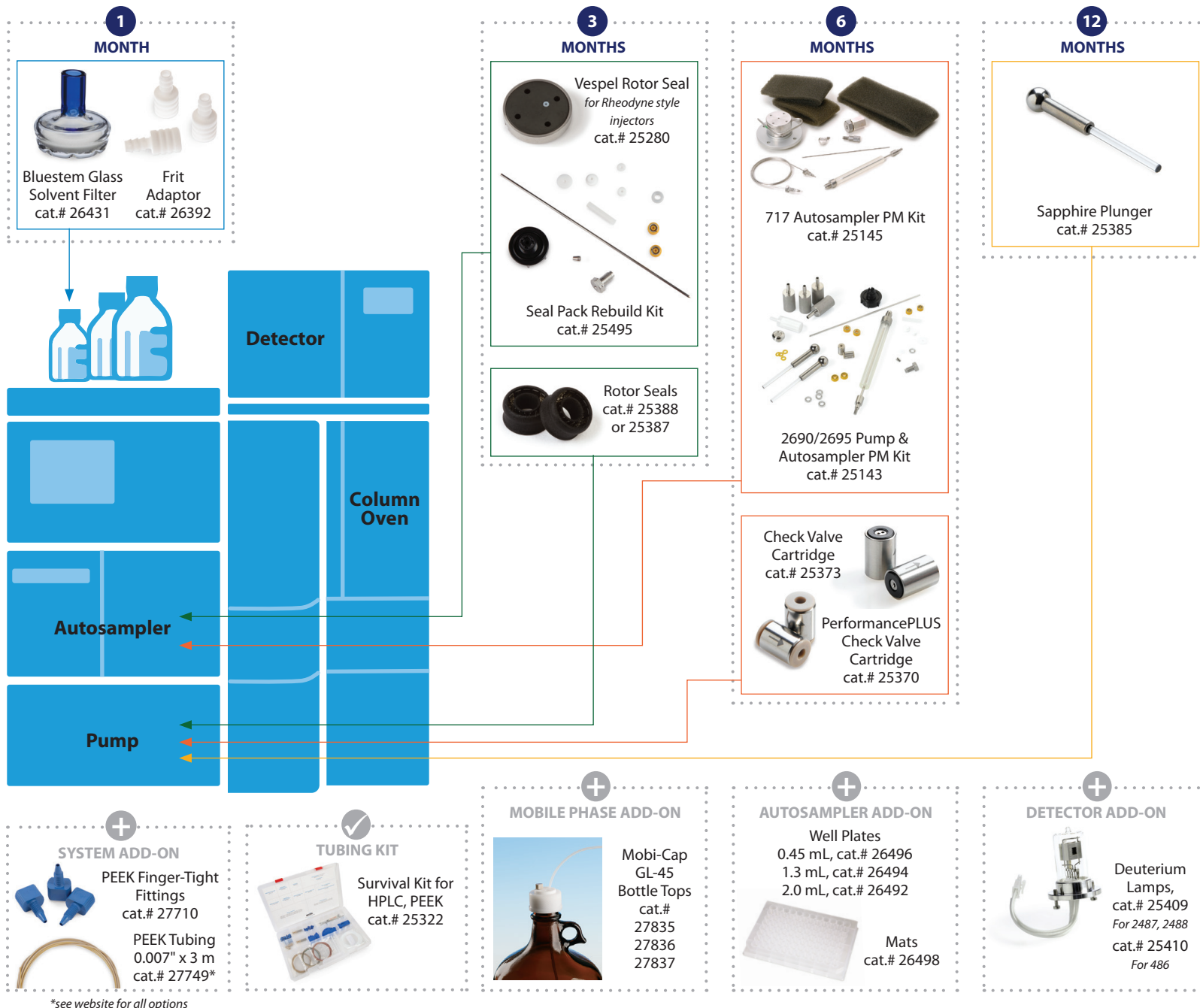
# Keep Your Lab Flowing

with RM on Your Waters Alliance HPLC Systems

Routine maintenance (RM) reduces downtime and protects your valuable analytical data. Use this guide to keep your Waters Alliance HPLC Systems operating at their best—replace these crucial components at the recommended intervals and keep extras on hand.

Factors such as analytical conditions, mobile phases and additives, and sample matrices can affect maintenance frequency.

For helpful maintenance videos and tips, plus a full list of replacement parts, visit [www.restek.com](http://www.restek.com)



\*see website for all options