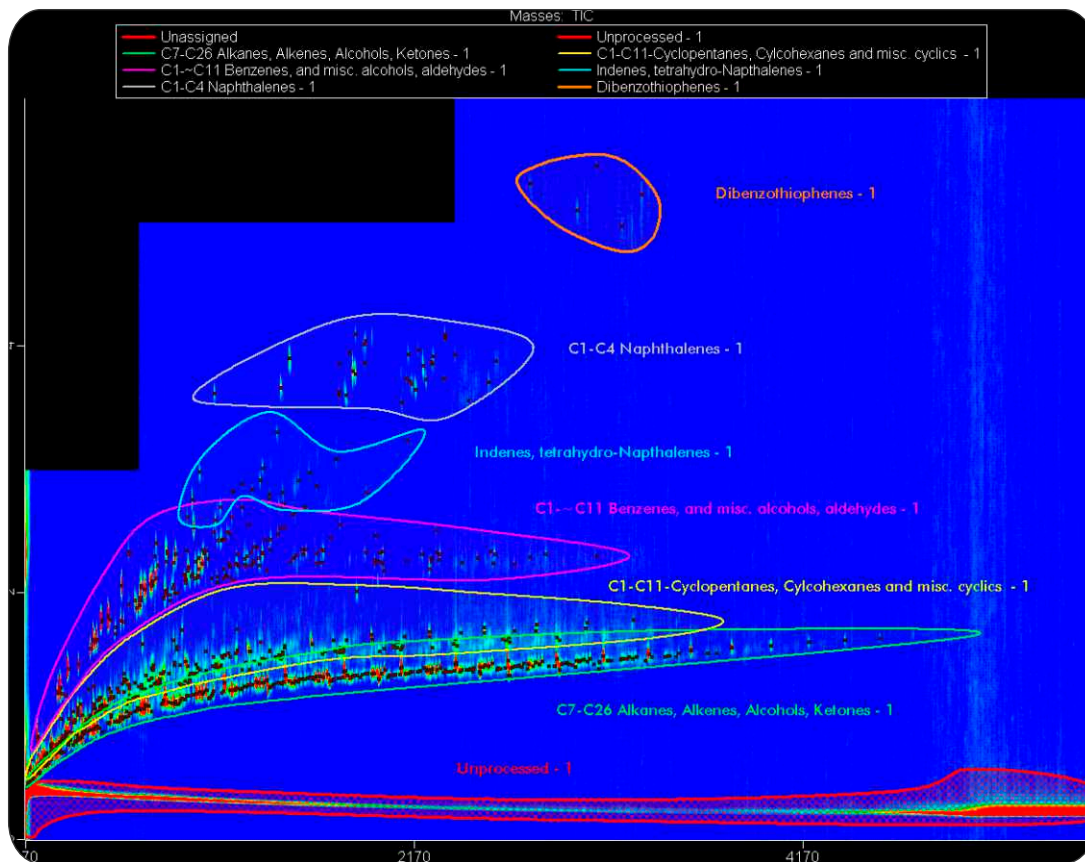


# GCxGC-TOFMS of Light Crude Oil Optimized with Variable Modulation & Structured Chromatographic Classifications

Life Science and Chemical Analysis Centre  
LECO Corporation, Saint Joseph, Michigan USA



**A highly structured GCxGC-TOFMS Contour Plot showing analysis of a Light Crude Oil Standard. This analysis uses variable modulation and classifications to facilitate the characterization of classes of compounds in this complex petroleum based sample.**

#### Columns:

30 m x 0.25 mm x 0.25  $\mu\text{m}$ , Rxi-5Sil MS  
1.1 m x 0.15 mm x 0.15  $\mu\text{m}$ , Rxi-17Sil MS

#### TOFMS:

35 to 650 m/z @ 200 spectra/s

For questions on this analysis  
e-mail us at: [life\\_science@leco.com](mailto:life_science@leco.com)

For a complete listing of snapshots  
and application notes visit us on the  
web at [www.leco.com](http://www.leco.com)

