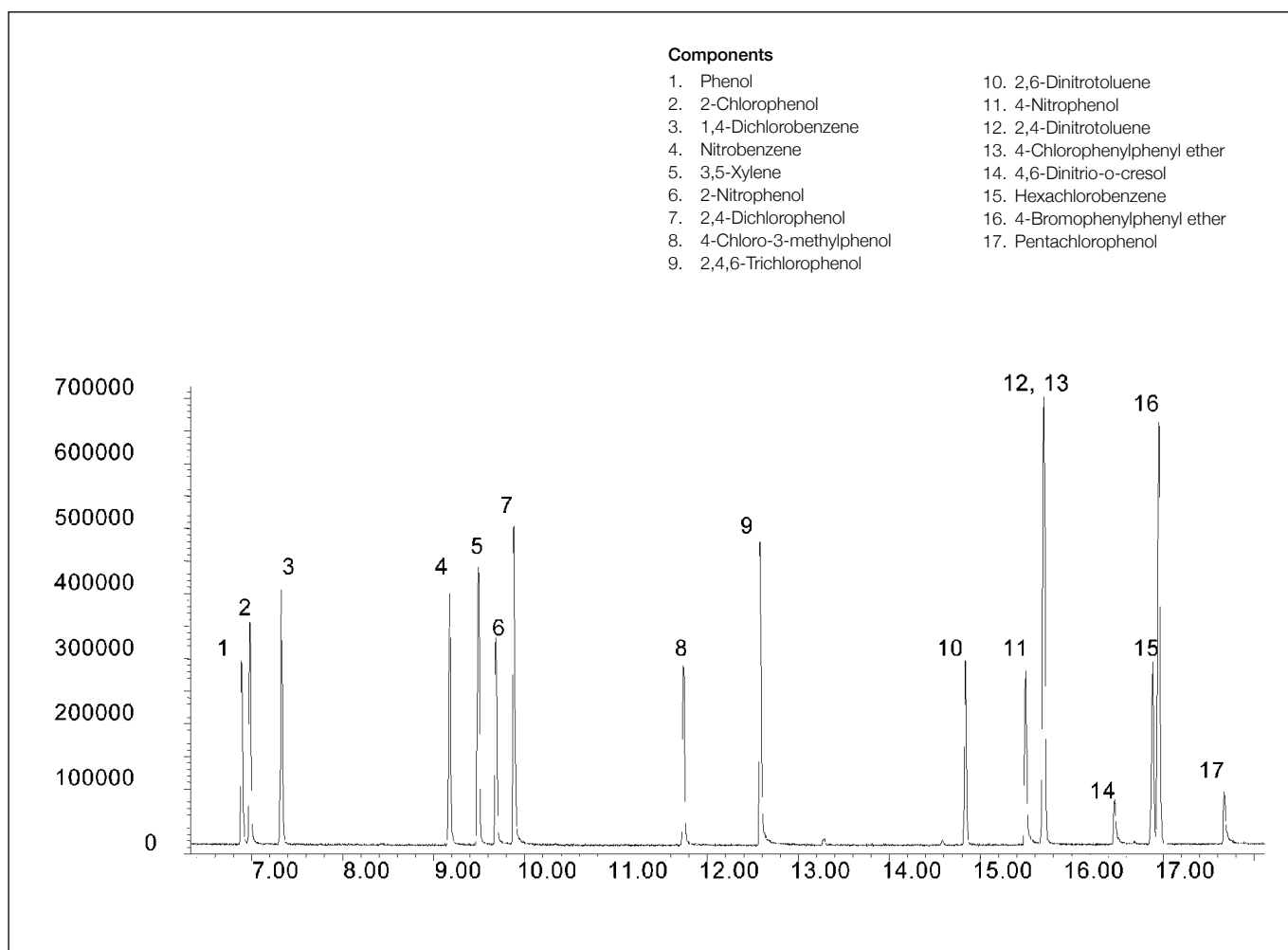


Analysis of chlorinated and nitroaromatic compounds

BPX35

Column part number	054701		
Phase	BPX35	Carrier gas flow	1.8 mL/min
Column	30 m x 0.25 mm x 0.25 μ m	Constant flow	On
Sample	10 ppm in methanol	Average linear velocity	35 cm/sec, 40°C
Initial temperature	40°C, 1 min	Injection mode	Split (100:1)
Rate 1	30°C/min to 200°C	Injection volume	1 μ L
Rate 2	4°C/min to 300°C	Injection temperature	250°C
Final temperature	300°C, 5 min	Liner type	4 mm ID Single Taper
Detector	MS	Full scan/SIM	Full scan 45 - 450
Carrier gas	He, 25.7 psi		


 For more information visit www.trajanscimed.com or contact techsupport@trajanscimed.com