

Enables the Brevis™ GC-2050 to be Controlled by Waters™ Empower™

Shimadzu GC Driver for Waters Empower



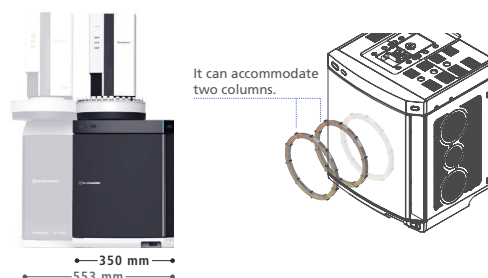
Brevis™ GC-2050



Nexis™ GC-2030

■ Enables Control of the Brevis GC-2050, a System that Offers Uncompromised Analytical Performance in a Small Footprint

The compact Brevis GC-2050, with a system width of 350 mm including the autoinjector (AOC™-30i), enables even more efficient use of laboratory space. Compared to the same configuration of the Nexis GC-2030, the system width has been reduced by approximately 35 %. Despite its compact design, the instrument accommodates two industry-standard 7-inch capillary columns and also allows for seamless switching between AOC and HS-20 analysis.

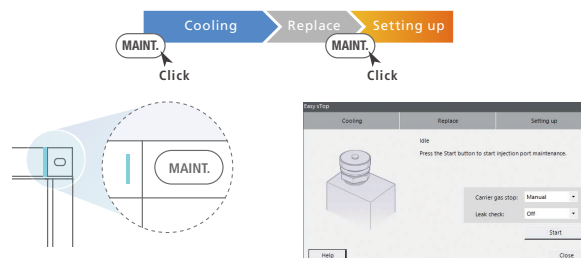


■ Facilitates Easy Daily Maintenance with Support for the Easy sTop Function



The GC-2050 is equipped with a function (Easy sTop) that automatically lowers the GC inlet temperature and simplifies liner (consumable) replacement by simply pressing the MAINT. button on the upper right of the GC front panel. It can also be operated from the Empower window, helping to ensure a convenient workflow in the lab.

Note: Operating the Easy sTop function from Empower is possible with both the GC-2030 and GC-2050.

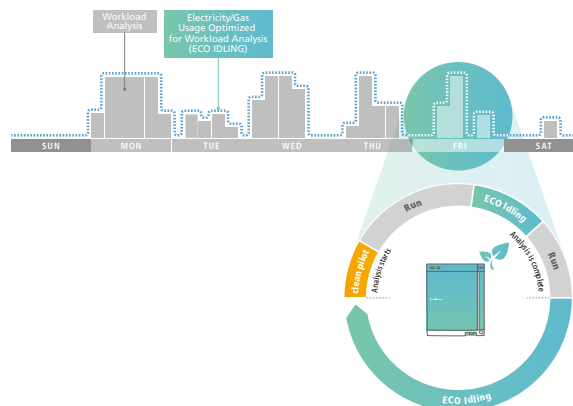


■ Eco Idling for Eco-Friendly Analysis – Now with Automatic Eco Mode Support



The system learns the analysis patterns and visualizes the workload, while also suggesting an eco-friendly operation schedule. During analysis, it delivers high performance, and when idle, it automatically switches to an energy-saving ECO idling mode, balancing both analytical tasks and eco-efficiency.

Note: Compatible with GC-2030 and GC-2050.



Controllable Hardware

GC Unit Nexis GC-2030, Brevis GC-2050, GC-2010 Plus, GC-2010 Pro, GC-2010, GC-2014, GC-2014C

Options AOC-30i, AOC-20i (Plus) autoinjector, AOC-20s (U) autosampler, HS-20 (NX)/HS-10 headspace sampler

Nexis GC-2030 and Brevis GC-2050

Unit	Device name
Sample Injector	GC-2030 : SPL-2030, WBI-2030, OCI-2030 (NX), PTV-2030, SINJ-2030, SPI-U(1.0)
	GC-2050 : SPL-U(1.0), PTV-U(1.0), WBI-U(1.0), OCI NX-U(1.0), SINJ-U(1.0), SPI-U(1.0)
Detector	GC-2030 : FID-2030, TCD-2030, ECD-2010 Exceed, FPD-2030, FTD-2030, BID-2030, SCD-2030, PTC-2030, AB BOARD
	GC-2050 : FID-U(1.0), FPD-U(1.0), ECD-2010 Exceed U, FTD-U(1.0), BID-U(1.0), STCD-U(1.0), AB BOARD
Advanced Flow Technology	GC-2030 : Backflush, detector splitting, detector switching, heart-cut system
	GC-2050 : Backflush, detector splitting
Additional Temperature Controller	GC-2030 : Auxiliary temperature control unit
	GC-2050 : Auxiliary temperature control unit
Additional Flow Controller	GC-2030 : APC (3 auxiliary channels), APC (1 auxiliary channel)
	GC-2050 : APC (3 auxiliary channels), APC (1 auxiliary channel)
Options	GC-2030 : Gas selector, Low-temperature control solenoid valve set CRG-2030, External equipment control relay PGC-2030, PRG Box
	GC-2050 : Gas selector, Low-temperature control solenoid valve set CRG-2030, PRG-2030, PRG BOX

GC-2010 (Plus/Pro) and GC-2014 (C)

Unit	Description
Sample Injector	GC-2010 (Plus/Pro) : SPL-2010 (Plus), WBI-2010 (Plus), OCI/PTV-2010 (Plus) GC-2014 (C) : SPL-2014, WBI-2014, DINJ-2014, SINJ-2014
Detector	GC-2010 (Plus/Pro) : FID-2010 (Plus), TCD-2010 (Plus), ECD-2010 Exceed, ECD-2010 (Plus), FPD-2010 (Plus), FTD-2010 (Plus), BID-2010 Plus, AB BOARD GC-2014 (C) : FID-2014, TCD-2014, ECD-2014, FPD-2014, FTD-2014 (C), AB BOARD
Additional Temperature Controller	GC-2030 : Auxiliary temperature control unit
	GC-2050 : Auxiliary temperature control unit
Additional Flow Controller	APC (3 auxiliary channels), AMC (2 auxiliary channels) Note: AMC is an option for the GC-2014.
Options	Low-temperature control solenoid valve set: CRG-2010 External unit control relay: PRG-2010 (Plus), PRG BOX

- Dual-injection systems are not supported.
- Up to four Shimadzu GC units can be controlled on one data acquisition server (e.g. LAC/E^{32™}).
- Both the Shimadzu LC driver and Shimadzu GC driver for Empower can be installed on one computer or Data Acquisition Server (e.g., LAC/E³²)
- A Shimadzu instrument and third-party instrument cannot be connected to the same data acquisition server (e.g. LAC/E³²) at the same time. Provide a data acquisition server dedicated for Shimadzu instruments.



- Automated support functions utilizing digital technologies, such as M2M, IoT, and Artificial Intelligence (AI), that enable higher productivity and maximum reliability.
- Allows a system to monitor and diagnose itself, handle any issues during data acquisition without user input, and automatically behave as if it were operated by an expert.
- Supports the acquisition of high quality, reproducible data regardless of an operator's skill level for both routine and demanding applications.

Brevis, Nexis, AOC and Analytical Intelligence logo are trademarks of Shimadzu Corporation or its affiliated companies in Japan and/or other countries.
Waters, Empower and LAC/E³² are trademarks of Waters Corporation and its affiliated entities.



Shimadzu Corporation
www.shimadzu.com/an/

For Research Use Only. Not for use in diagnostic procedures.

This publication may contain references to products that are not available in your country. Please contact us to check the availability of these products in your country.

Company names, products/service names and logos used in this publication are trademarks and trade names of Shimadzu Corporation, its subsidiaries or its affiliates, whether or not they are used with trademark symbol "TM" or "®".

Third-party trademarks and trade names may be used in this publication to refer to either the entities or their products/services, whether or not they are used with trademark symbol "TM" or "®".

Shimadzu disclaims any proprietary interest in trademarks and trade names other than its own.

The contents of this publication are provided to you "as is" without warranty of any kind, and are subject to change without notice. Shimadzu does not assume any responsibility or liability for any damage, whether direct or indirect, relating to the use of this publication.