



Chromatography columns and consumables  
**Environmental workflow solutions**

# Complete environmental workflow solutions

For environmental scientists pursuing lower detection limits and higher robustness in their analysis, selecting the correct workflow is imperative for success in delivering high-quality results.

We strive to create a better understanding of how to compose an optimal workflow allowing scientists to improve their throughput

and provide imperative environmental data faster and more consistently. The workflows in this brochure offer a sampling from Thermo Fisher Scientific.

For more information or other workflows, please [contact us](#).

## Pesticides and Per-and polyfluoroalkyl substances (PFAS)

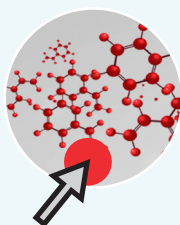
- Thermo Scientific™ HyperSep™ SPE products
- Thermo Scientific™ Accucore™ (U)HPLC columns
- Thermo Scientific™ Hypersil GOLD™ (U)HPLC columns
- Thermo Scientific™ Acclaim™ (U)HPLC columns
- Thermo Scientific™ TraceGOLD™ GC columns
- Gas chromatography (GC) parts and accessories
- Thermo Scientific™ SureSTART™ vials and caps

## Volatile organic compounds (VOC) and semi-volatile organic compounds (SVOC)

- Solid-phase extraction products
- TraceGOLD GC columns
- GC parts and accessories
- SureSTART vials and caps

## Persistent organic pollutants (POP)

- Solid-phase extraction products
- Accucore (U)HPLC columns
- TraceGOLD GC columns
- GC parts and accessories
- SureSTART vials and caps



Want to make sure you choose the right columns?

Use our selection guide



Want to make sure you choose the right vial for your analysis?

Use our SureSTART selection guide

# Contents

## Environmental workflow solutions

---

●	Pesticides workflow	4
●	PFAS workflow	5
●	Semi-volatiles workflow	6
●	Polar pesticides workflow	7
●	Volatiles workflow	8
●	Dioxin and POPs workflow	9

---

## Featured products

---

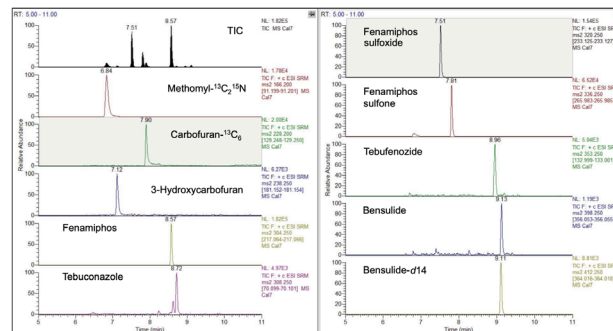
●	HPLC columns and accessories	10
●	GC columns	12
●	GC accessories	13
●	Vials and caps	15

---

# Pesticides workflow

## U.S. EPA Method 543 on Hypersil GOLD and automated online SPE

Traditionally, the United States Environmental Protection Agency (U.S. EPA) methods for drinking water analysis have required offline solid-phase extraction (SPE) to concentrate analytes to a level that can be detected using LC-MS instrumentation. This process requires the collection of large volumes of sample that are extracted using offline SPE. Online pre-concentration and solid-phase extraction (online SPE) avoids these disadvantages by utilizing a smaller sample volume collected in the field and eliminating the manual offline SPE step. Using the LC to conduct the SPE step eliminates intra-assay variability that can arise from manual processing of samples or inconsistencies between individual SPE cartridges. Samples can be loaded onto the autosampler prior to analysis, and the experimental batch can be run with little to no user intervention. Online SPE for pesticide workflows make the application easy and automated, and the separation on Thermo Scientific™ Hypersil GOLD™ aQ and mixed-mode polar C18 columns, provide the needed retention of the pesticides.



**Figure 1.** Total ion chromatogram and individually extracted chromatograms for each analyte and internal standard

**Application note:** EPA method 543 - Quantitation of organic pesticides in drinking water using online pre-concentration/SPE and tandem mass spectrometry



Vanquish Flex UHPLC system



TSQ Altis Plus triple quadrupole mass spectrometer



Hypersil GOLD aQ column



HyperSep Javelin direct-connect online SPE column

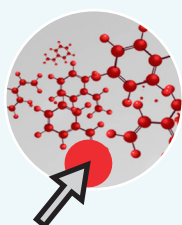


SureSTART vial and cap

### Workflow solution

Thermo Scientific instruments	Cat. no.
Thermo Scientific™ Vanquish™ Flex UHPLC system	<a href="#">IQLAAAGABH-FAPUMBHV</a>
Thermo Scientific™ TSQ Altis™ Plus Triple Quadrupole mass spectrometer	<a href="#">TSQ03-11002</a>
Thermo Scientific columns and guard columns	Cat. no.
Hypersil GOLD aQ column	<a href="#">25303-052130</a>
Thermo Scientific™ HyperSep™ Javelin direct-connect online SPE column	<a href="#">60310-201</a>
Thermo Scientific vials and caps	Cat. no.
Thermo Scientific™ SureSTART™ 0.3 mL screw vial	<a href="#">6PSV9-03FIVAP</a>
Thermo Scientific™ SureSTART™ 9 mm screw cap	<a href="#">6PSC9ST</a>

This workflow displays the newest recommended products



**Want to make sure you choose the right columns?**  
Use our selection guide

# PFAS workflow

## PFAS detection on Accucore RP-MS columns for EPA 8327

PFAS compounds detected in the different water matrices at both low and high spike concentrations with recoveries within the range required. All spiked water samples, in a variety of matrices, showed RSDs below 20% for most of the PFAS compounds, demonstrating the high robustness and reproducibility of the method. The Thermo Scientific™ Accucore™ RP-MS column provides excellent chromatographic separation and maintains robustness in challenging water matrices.

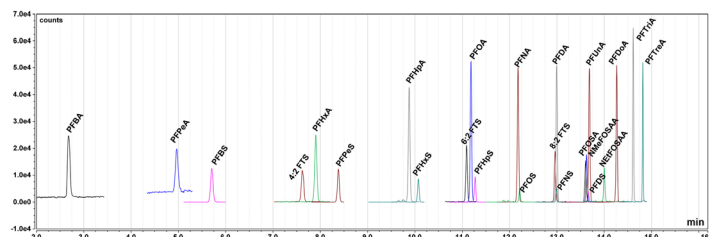


Figure 2. Overlaid chromatograms of all PFAS compounds included in this method

**Application note:** Direct analysis of selected PFAS in ground, surface, and waste water by LC-MS/MS



Vanquish Flex UHPLC system



TSQ Altis Plus triple quadrupole mass spectrometer



Accucore RP-MS column



Hypersil GOLD C18 selectivity column



SureSTART vial and cap

### Workflow solution

Thermo Scientific instruments	Cat. no.
Vanquish Flex UHPLC system	<a href="#">IQLAAAGABH-FAPUMBHV</a>
TSQ Altis Plus triple quadrupole mass spectrometer	<a href="#">TSQ03-11002</a>
Thermo Scientific columns and guard columns	Cat. no.
Accucore RP-MS column	<a href="#">17626-102130</a>
Accucore RP-MS guard cartridge	<a href="#">17626-012105</a>
Thermo Scientific™ Hypersil GOLD™ C18 selectivity column	<a href="#">25003-052130</a>
Thermo Scientific vials and caps	Cat. no.
Thermo Scientific™ SureSTART™ 2 mL screw vial	<a href="#">6ESV9-1PP</a>
Thermo Scientific™ 9 mm autosampler vial screw thread caps	<a href="#">C5000-50</a>
This workflow displays the newest recommended products	



**Want to make sure you choose the right vial for your analysis?** Use our SureSTART selection guide

# Semi-volatiles workflow

## SVOCs detection on Trace GOLD columns

Typically, SVOCs analysis starts with a solid-phase extraction of the water samples that will concentrate the sample up to 1000 times. They are traditionally run on a polar column. In this particular case we are looking at phenols, a semi-volatile organic chemical that belongs to nitrosamines, an emerging class of drinking water contaminants.

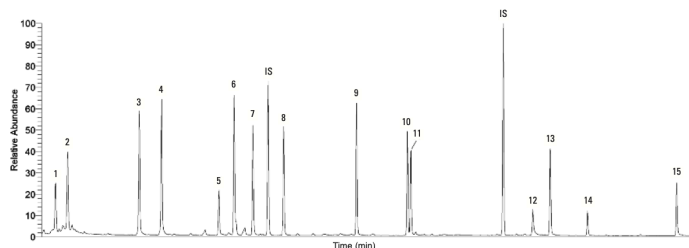


Figure 3. TIC chromatogram of 1 ng/μL of phenolic compounds separated on Thermo Scientific™ TraceGOLD™ TG-5SiIMS column

**Application note:** Analysis of phenols and chlorinated phenols in drinking water by GC-MS



AI/AS 1610 liquid autosampler



ISQ 7610 single quadrupole GC-MS system



TraceGOLD TG-5SiIMS GC column



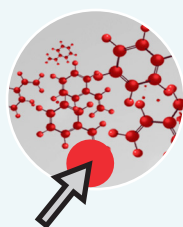
Super Clean gas cartridge filter



SureSTART vial and cap

### Workflow solution

Thermo Scientific instruments	Cat. no.
Thermo Scientific™ AI/AS 1610 liquid autosampler	<a href="#">MI-251000-0001</a>
Thermo Scientific™ ISQ™ 7610 single quadrupole GC-MS system	<a href="#">ISQ7610-AEI</a>
Thermo Scientific column	Cat. no.
TraceGOLD TG-5SiIMS GC column	<a href="#">26096-1420</a>
Thermo Scientific GC accessories	Cat. no.
Thermo Scientific™ LinerGOLD™ GC liner	<a href="#">453A1925-UI</a>
Thermo Scientific™ GC liner sealing ring	<a href="#">29001320</a>
Thermo Scientific™ septa	<a href="#">31303233</a>
Thermo Scientific™ fixed-needle, gas-tight syringe	<a href="#">365D374</a>
Thermo Scientific™ GC injection port base seal	<a href="#">290GA083</a>
Thermo Scientific™ Super Clean™ gas cartridge filter	<a href="#">60180-825</a>
Thermo Scientific™ nut	<a href="#">35050458</a>
Thermo Scientific™ ferrule	<a href="#">290VA191</a>
Thermo Scientific™ spring loaded transfer line nut	<a href="#">1R120434-0010</a>
Thermo Scientific vials and caps	Cat. no.
Thermo Scientific™ SureSTART™ 1.5 mL screw vial	<a href="#">6PSV9-TR1</a>
Thermo Scientific™ SureSTART™ 9 mm screw cap	<a href="#">6PSC9ST1</a>
This workflow displays the newest recommended products	

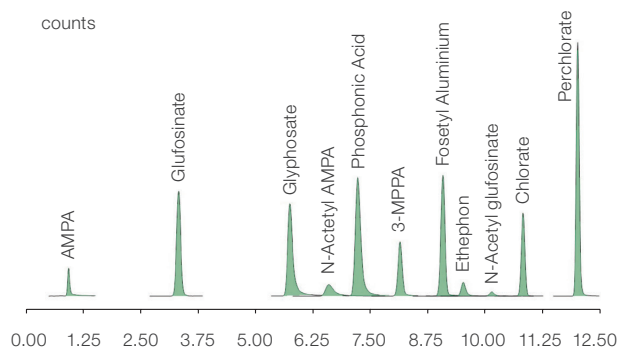


**Want to make sure you choose the right columns?**  
Use our selection guide

# Polar pesticides workflow

## High sensitive method for EtS and EtG in urine

Despite cultural practice modifications and pesticide residue control efforts implemented in many countries, the European Food Safety Authority reports show that pesticide contamination remains present in many plant samples. Among the 25 most frequently encountered pesticides, anionic or cationic polar pesticides are broadly identified. Facing these results, routine analysis demand is increasing; however, analyzing polar pesticides presents a difficult analytical challenge. The high polarity does not allow the direct analysis by common pesticides approach like reversed-phase HPLC. A new analytical method based on the Thermo Scientific™ Acclaim™ Trinity P1 column was developed to overcome this challenge. By competing with zwitterionic technology, this column chemistry allowed cationic and anionic polar pesticides analysis in a single run.



**Figure 4.** The typical chromatogram obtained after a 15 µL injection of 100 ppb standard solution on the Acclaim Trinity P1 column

**Technical note:** Acclaim Trinity P1 mixed-mode chromatography column coupled with an inert LC system: an innovative approach for underivatized highly polar pesticides separation



Vanquish Flex UHPLC system



TSQ Altis Plus triple quadrupole mass spectrometer



Acclaim Trinity P1 column



Acclaim guard holder and coupler



SureSTART vial and cap

### Workflow solution

Thermo Scientific instruments	Cat. no.
Vanquish Flex UHPLC system	<a href="#">QLAAAGABH-FAPUMBHV</a>
TSQ Altis Plus triple quadrupole mass spectrometer	<a href="#">TSQ03-11002</a>
Thermo Scientific columns and guard columns	Cat. no.
Acclaim Trinity P1 column	<a href="#">071389</a>
Acclaim Trinity P1 guard cartridge	<a href="#">071390</a>
Thermo Scientific™ Acclaim™ guard holder and coupler	<a href="#">069707</a>
Thermo Scientific vials and caps	Cat. no.
SureSTART 2 mL screw vial	<a href="#">6ESV9-1PP</a>
SureSTART 9 mm screw cap	<a href="#">6PSC9ST1</a>
This workflow displays the newest recommended products	



**Want to make sure you choose the right vial for your analysis?** Use our SureSTART selection guide

# Volatiles workflow

## Increased separation of critical peaks

U.S. EPA Method 524.2 is widely used in routine environmental analysis laboratories to test water samples for volatile organic compounds (VOCs). The method tests for a wide range of VOCs, including the four trihalomethane disinfection by-products that have sufficiently high volatility and low water solubility, to be removed from water samples with purge and trap (P&T) procedures. Routine drinking water monitoring regulatory standards require contract testing labs to analyze for the presence of VOCs due to the potentially negative health effects associated with public water source contamination. This application represents a workflow for VOCs run on Thermo Scientific™ TraceGOLD™ TG-VMS column (20 m, 0.18 mm, 1 µm) with excellent separation of critical peaks in less than 12 min.

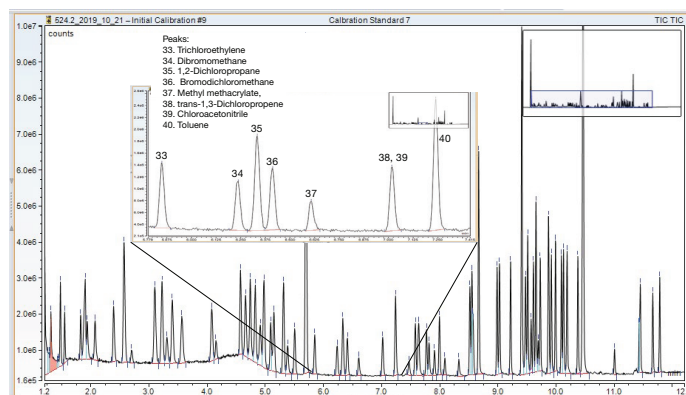


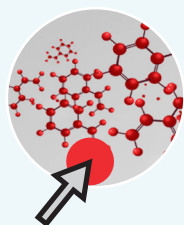
Figure 5. Total ion chromatogram (TIC) of a 5 ppb VOC standard (analyzed using the water method) with an inset indicating consistent peak shapes and separation with minimal water interference

**Application note:** Routine analysis of volatile organic compounds in drinking water with ISQ 7000 GC-MS



### Workflow solution

<b>Thermo Scientific instrument</b>	<b>Cat. no.</b>
ISQ 7610 single quadrupole GC-MS system	<a href="#">ISQ7610-AEI</a>
<b>Other instrument</b>	
Teledyne Tekmar Atomx XYZ automated purge and trap VOC sample preparation system	
<b>Thermo Scientific column</b>	<b>Cat. no.</b>
TraceGOLD TG-VMS GC column	<a href="#">26080-4950</a>
<b>Thermo Scientific GC accessories</b>	<b>Cat. no.</b>
GC liner sealing ring	<a href="#">MI-290AA1-000</a>
LinerGOLD GC liner	<a href="#">453A1335-UI</a>
Septa	<a href="#">31303233</a>
Fixed-needle, gas-tight syringe	<a href="#">365D374</a>
GC injection port base seal	<a href="#">290GA083</a>
Super Clean gas cartridge filter	<a href="#">60180-825</a>
Nut	<a href="#">35050458</a>
Ferrule	<a href="#">290VA191</a>
Spring loaded transfer line nut	<a href="#">1R120434-0010</a>
<b>Thermo Scientific vials and caps</b>	<b>Cat. no.</b>
Thermo Scientific™ SureSTART™ EPA certified screw vial and cap kit	<a href="#">6AK40AOTAS</a>
Thermo Scientific™ SureSTART™ 2 mL amber glass screw top vial	<a href="#">6ASV9-S2P</a>
Thermo Scientific™ SureSTART™ 9 mm screw cap	<a href="#">6ASC9ST1</a>
This workflow displays the newest recommended products	



**Want to make sure you choose the right columns?**  
Use our selection guide



# Dioxin and POPs workflow

## Very high-throughput analysis on persistent organic pollutants

To aim for high sensitivity analysis of dioxins and other POPs. The coupling of two gas chromatographs to one single mass spectrometer (MS) strongly increases its flexibility allowing for the maximum exploitation and optimum adaptation to laboratory application requirements of this high performance detection device. Dual column adapters enable the installation of two columns within one single gas chromatograph (GC). In combination with a dual GC setup two, three or a maximum of four columns can thus be connected to one single mass spectrometer. In this way the analytical system can be constantly prepared to perform different applications like PCDD/F, PCBs, PBDEs, etc. changing automatically between columns within a measurement sequence. In another approach, the latest technical developments, based on a dual GC configuration, enable to strongly increase sample throughput.

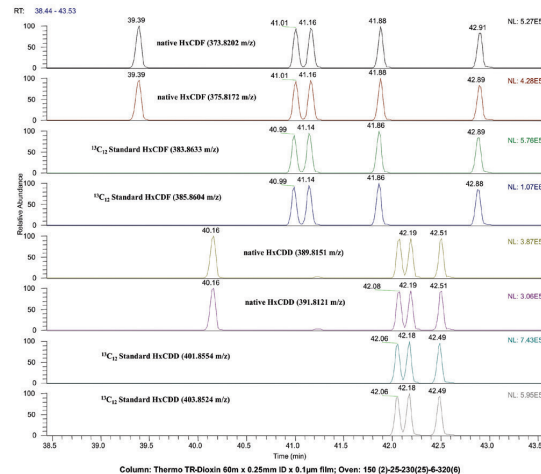
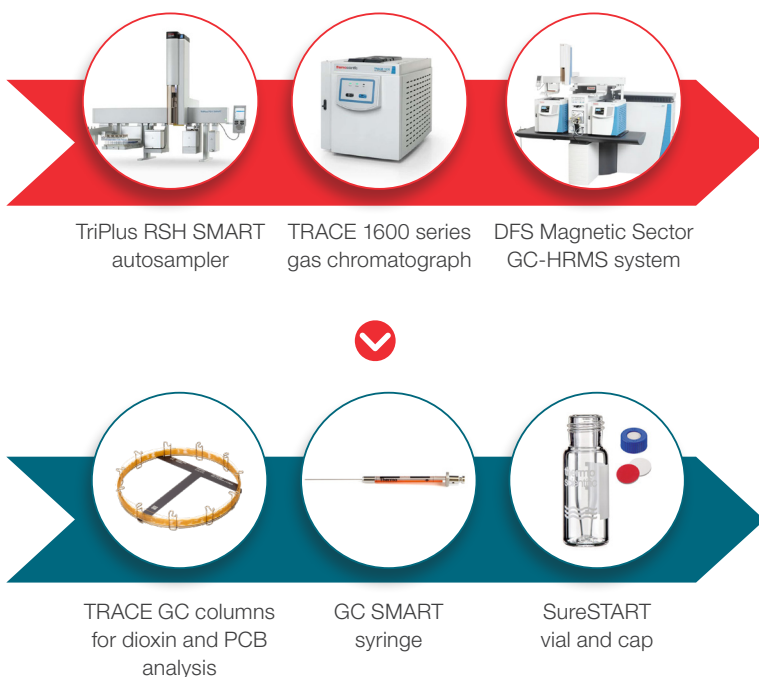


Figure 6. Example of peak integrity of dioxin trace analysis (Hexa CDD/F) using the DualData XL acquisition

**Technical note:** DualData XL DFS magnetic sector GC-HRMS high throughput analysis of polychlorinated dioxins/furans (PCDD/Fs)



### Workflow solution

Thermo Scientific instruments	Cat. no.
Thermo Scientific™ TriPlus™ RSH SMART autosampler	<a href="#">1R77010-1160</a>
Thermo Scientific™ TRACE™ 1600 series gas chromatograph	<a href="#">MI-148000-0001</a>
Thermo Scientific™ DFS Magnetic Sector GC-HRMS system	<a href="#">IQLAAEGAAL-FABKMAEG</a>
Thermo Scientific column	Cat. no.
Thermo Scientific™ TRACE™ GC column	<a href="#">26AF154P</a>
Thermo Scientific GC accessories	Cat. no.
GC liner sealing ring	<a href="#">29001320</a>
LinerGOLD GC liner	<a href="#">453A1925-UI</a>
Septa	<a href="#">31303233</a>
GC injection port base seal	<a href="#">290GA083</a>
Super Clean gas cartridge filter	<a href="#">60180-825</a>
Nut	<a href="#">35050458</a>
Thermo Scientific™ 3-Port SilFlow™ device	<a href="#">60201-398</a>
Thermo Scientific™ GC SMART™ syringe	<a href="#">365D0271-SM</a>
Thermo Scientific vials and caps	Cat. no.
Thermo Scientific™ SureSTART™ 0.3 mL screw vial	<a href="#">6PSV9-03FIVAP</a>
Thermo Scientific™ SureSTART™ 9 mm screw cap	<a href="#">6PSC9TST</a>
This workflow displays the newest recommended products	



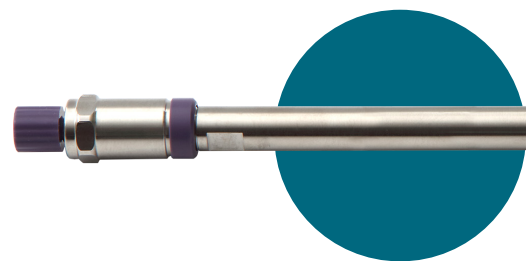
**Want to make sure you choose the right vial for your analysis?** Use our SureSTART selection guide

# HPLC columns and accessories



## Accucore RP-MS HPLC columns

Optimized for MS detection, Accucore RP-MS LC columns are an excellent combination of speed and quality of separation. Based on Core Enhanced Technology, Accucore columns provide fast, high-resolution separations—without the elevated backpressures required by sub-2 µm particles.



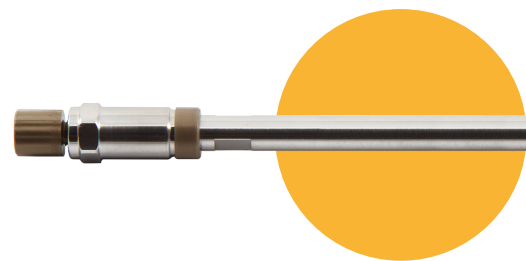
## Hypersil GOLD C18 selectivity HPLC columns

Achieve exceptional peak shape and resolution for your HPLC and LC-MS applications with Hypersil GOLD HPLC columns. These endcapped, ultrapure, silica-based columns deliver significant reduction in peak tailing using generic gradients with C18 selectivity.



## Hypersil GOLD aQ Polar Endcapped C18 columns

Retain and resolve polar analytes using Hypersil GOLD aQ Polar Endcapped C18 columns. These columns provide excellent peak shape, even with challenging reversed phase separations using highly aqueous mobile phases.



## HyperSep Javelin direct-connect online SPE columns

Clean-up and concentrate target analytes in minutes with HyperSep online SPE products. Available in several convenient formats, the columns utilize popular HyperSep SPE chemistries.



### Accucore RP-MS columns

Format	Length (metric)	Particle size	Cat. no.
HPLC column	100 mm	2.6 µm	<a href="#">17626-102130</a>
Guard cartridge (4/pk)	10 mm	2.6 µm	<a href="#">17126-014005</a>

### Hypersil GOLD columns

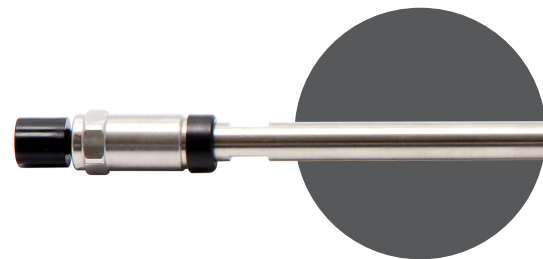
Description	Length (metric)	Particle size	Cat. no.
Hypersil GOLD C18 selectivity HPLC column	50 mm	3 µm	<a href="#">25003-052130</a>
Hypersil GOLD aQ Polar Endcapped C18 column	50 mm	3 µm	<a href="#">25303-052130</a>

### HyperSep Javelin direct-connect online SPE columns

Type	Unit size	Cat. no.
Online solid-phase extraction column	4	<a href="#">60310-201</a>

## Acclaim Trinity P1 HPLC columns

Simultaneously separate pharmaceutical drug substances and their counterions with high-efficiency Acclaim Trinity P1 LC columns. A unique trimodal surface chemistry provides concurrent reversed-phase, cation-exchange and anion-exchange functionalities for maximum flexibility in method development.



## Acclaim guard holder and coupler

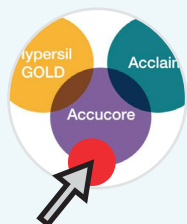
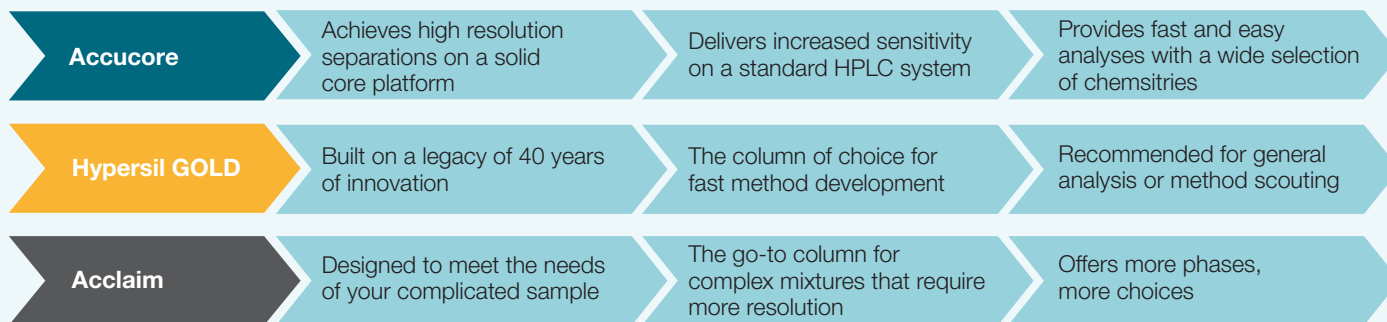
Use the Acclaim guard holder and coupler for your Acclaim guard columns. They can be purchased separately or as a kit.



### Acclaim Trinity P1 columns

Format	Length	Particle size	Cat. no.
HPLC column	100 mm	3 µm	<a href="#">071389</a>
Guard cartridge (2/pk)	10 mm	3 µm	<a href="#">071390</a>
Acclaim guard cartridge holder-coupler kit V-2			<a href="#">069707</a>

### Which Thermo Scientific columns meets your separation needs?



### U/HPLC columns optimized for your analytical performance

Take a closer look

# GC columns



## TraceGOLD TG-5MS GC columns

Employ the most widely used MS phase in gas chromatography with the 5% phenyl phase TraceGOLD TG-5MS GC column.

## TraceGOLD TG-5SiIMS GC columns

Thermo Scientific TraceGOLD TG-5SiIMS GC columns incorporate phenyl groups in the polymer backbone for improved thermal stability, reduced bleed, and reduced susceptibility to oxidation.

## TraceGOLD TG-VMS GC columns

Thermo Scientific TraceGOLD TG-VMS GC columns provide good resolution and fast analysis times for volatile compounds.



## TRACE GC columns for dioxin and PCB analysis

Analyze dioxins and polychlorinated biphenyls (PCBs) with custom-tailored TRACE GC columns for dioxin and PCB analysis for unsurpassed performance and reproducibility. Optimized to meet the requirements of high-resolution GC-MS methods, these columns deliver optimum performance with exceptional stability and very low bleed. These low-polarity columns provide wide coverage of the 17 congeners with the highest toxicological significance (2,3,7,8-chlorine substituted congeners).



### GC columns

Description	Length (metric)	Diameter	Film thickness	Cat. no.
TraceGOLD TG-5MS GC column	30 m	0.25 mm	0.5 $\mu$ m	<a href="#">26098-2230</a>
TraceGOLD TG-5SiIMS GC column	30 m	0.25 mm	0.25 $\mu$ m	<a href="#">26096-1420</a>
TraceGOLD TG-VMS GC column	20 m	0.18 mm	1 $\mu$ m	<a href="#">26080-4950</a>
TRACE GC column	60 m	0.25 mm	0.25 $\mu$ m	<a href="#">26AF154P</a>

# GC accessories

Semi-volatiles  
workflow

Volatiles  
workflow

Dioxin and  
POPs  
workflow

## Super Clean gas cartridge filters

Ensure high-purity (99.9999% or 6.0 grade) output gas for optimal GC performance using Super Clean gas cartridge filters. The baseplates can be configured to individual user needs, and there is no contamination during cartridge change. Easy-to-use and cost-effective, Super Clean gas cartridge filters enable fast, tool-free replacement.



## Fixed-needle, gas-tight syringes

Get durability, clarity and accuracy in GC sample introduction for confidence in analytical results, time-after-time. Thermo Scientific fixed-needle, gas-tight syringes offer an affixed needle and a plunger that creates a tight seal with the barrel.



## GC SMART syringes

Use the unique technology of GC SMART syringes as a traceable usage-based approach to GC syringe management, resulting in increased reliability, instrument up-time, confidence in the results, and full traceability.



## LinerGOLD GC liners

Use the gold standard in GC liner performance and consistency. Thermo Scientific LinerGOLD GC liners provide enhanced inertness, leading to increased accuracy, sensitivity, and precision in your GC analysis.



### GC accessories

Description	Unit size	Cat. no.
Super Clean gas cartridge filter	1	<a href="#">60180-825</a>
Fixed-needle, gas-tight syringe	1	<a href="#">365D3741</a>
GC SMART syringe	1	<a href="#">365D0271-SM</a>
LinerGOLD GC liners	5	<a href="#">453A1925-UI</a> <a href="#">453A1255-UI</a>

## Ferrules and nuts

Use ferrules and nuts to ensure optimal performance. They are available in different materials of various dimension to accommodate a range of instruments, columns and applications.



## GC liner sealing rings

Match the best sealing ring with the injection port liner.



## Septa

Ensure optimal performance of your GC instrument with bleed and temperature optimized Thermo Scientific™ BTO and TR-Green septa. Made of low-bleed silicone, these septa have excellent mechanical properties, are ideal for demanding GC-MS applications, and may be used reliably up to 400 °C.



## GC injection port base seals

Ensure optimal GC analysis by using exceptional sealing and inert properties of Thermo Scientific GC injection port base seals.



### GC accessories

Description	Unit size	Cat. no.
Ferrule	10	<a href="#">290VA191</a>
Nut	1	<a href="#">1R120434-0010</a>
Retaining nut	5	<a href="#">35050458</a>
GC liner sealing ring	1	<a href="#">29001320</a>
Septa	50	<a href="#">31303233</a>
GC injection port base seal	2	<a href="#">290GA083</a>

# Vials and caps

Pesticides workflow

PFAS workflow

Semi-volatiles workflow

Polar pesticides workflow

Volatiles workflow

Dioxin and POPs workflow

## SureSTART 0.3 mL glass screw vials

Choose SureSTART 0.3 mL glass screw top microvials, performance level 3, when you need to maximize the injection volume for <2 mL samples.



## SureSTART 1.5 mL total recovery glass snap vials and caps

Choose SureSTART 1.5 mL total recovery glass screw top microvials, performance level 3, when you need to maximize the injection volume for <2 mL samples.



## SureSTART 2 mL polypropylene screw vials

Use performance level 1 SureSTART 2 mL polypropylene screw top microvials for everyday chromatography analysis of <2 mL samples.



## SureSTART 2 mL amber glass screw vial

Choose SureSTART 2 mL glass screw top vials, performance level 2, to ensure high quality data with an uninterrupted workflow in high-throughput applications using GC, HPLC/UHPLC, and single or triple quadrupole MS systems.



## SureSTART EPA certified screw vial and cap kits

Ensure that your environmental analyses meet government regulations with our level 2 SureSTART EPA certified screw vial and cap kits.



## SureSTART 9 mm screw caps

Use SureSTART 9 mm screw caps with screw vials that have a 9 mm opening.



## 9 mm autosampler vial screw thread caps

Prevent septa push through and over- and under-tightening.



### SureSTART vials

Performance	Material	Diameter	Total volume	Usable volume	Cat. no.
Level 3	Clear glass	9 mm x 32 mm	0.3 mL	0.25 mL	<a href="#">6PSV9-03FIVAPT</a>
Level 3	Clear glass	11 mm x 32 mm	1.5 mL	1.1 mL	<a href="#">6PRV11-TR1</a>
Level 1	Polypropylene	9 mm x 32 mm	1.5 mL	1 mL	<a href="#">6ESV9-1PP</a>
Level 2	Amber glass	9 mm x 32 mm	2 mL	1.5 mL	<a href="#">6ASV9-S2P</a>
Level 2	Amber glass	24 mm x 95 mm	40 mL	—	<a href="#">6AK40AOTAS</a>

### SureSTART caps and autosampler caps

Septum	Closure material	Thickness	Closure size	Cat. no.
Red PTFE/white silicone/red PTFE	Blue polypropylene	1 mm	9 mm	<a href="#">6PSC9TST</a>
White silicone/red PTFE		1 mm	9 mm	<a href="#">6ASC9ST1</a>
Polypropylene	Polypropylene	—	9 mm	<a href="#">C5000-50</a>

# Chromatography columns and consumables

Available to order online

**Click. Done!**



A collaboration with Thermo Fisher Scientific gives you the collective power of technology, methods and workflows to serve a wider range of industries and applications – ensuring you and the communities you serve are completely confident in the results.

Ordering your chromatography and analytical science products from us is easier than ever. Once you have set up an online account, simply add your favorite chromatography consumables to your basket, check out online and have your items delivered straight to your door.

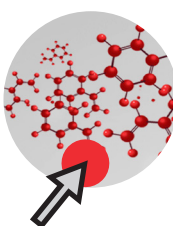
## Key features of online ordering

- **24/7** track your order status and view invoices online
- **Check order history** and easily reorder your favorite products
- **Buy** all your Thermo Scientific consumables in one place
- **eProcurement** (B2B) connections available
- **Generate a quote** from the cart, or transfer your cart to colleagues so they can add products, review, or approve the order
- **View** account specific pricing and access web-only price promotions
- **Educational resources** available online with training courses and webinars for your applications



**Want to make sure you choose the right vials and caps for your analysis?**

Use our SureSTART selection guide



**Want to make sure you choose the right columns?**

Use our selection guide

Learn more at [thermofisher.com/chromatographyconsumables](https://thermofisher.com/chromatographyconsumables)