

## Product Information

### Supel-Q GC PLOT Capillary Columns

#### Supelco PLOT Columns

Supelco PLOT columns are an ideal choice for many permanent gas and light hydrocarbon analyses in the petrochemical/chemical industry. Supelco PLOT columns are prepared using a proprietary patented adhesive technology that firmly bonds the adsorbent particles to the wall of the capillary column. The adhesive also bonds the particles to each other, eliminating particle loss during routine analysis or rapid temperature programming. A significant feature of the adhesive is its high temperature limit, greater than 360°C, which makes the operating temperature of the column a function of the particles used, not the adhesive.

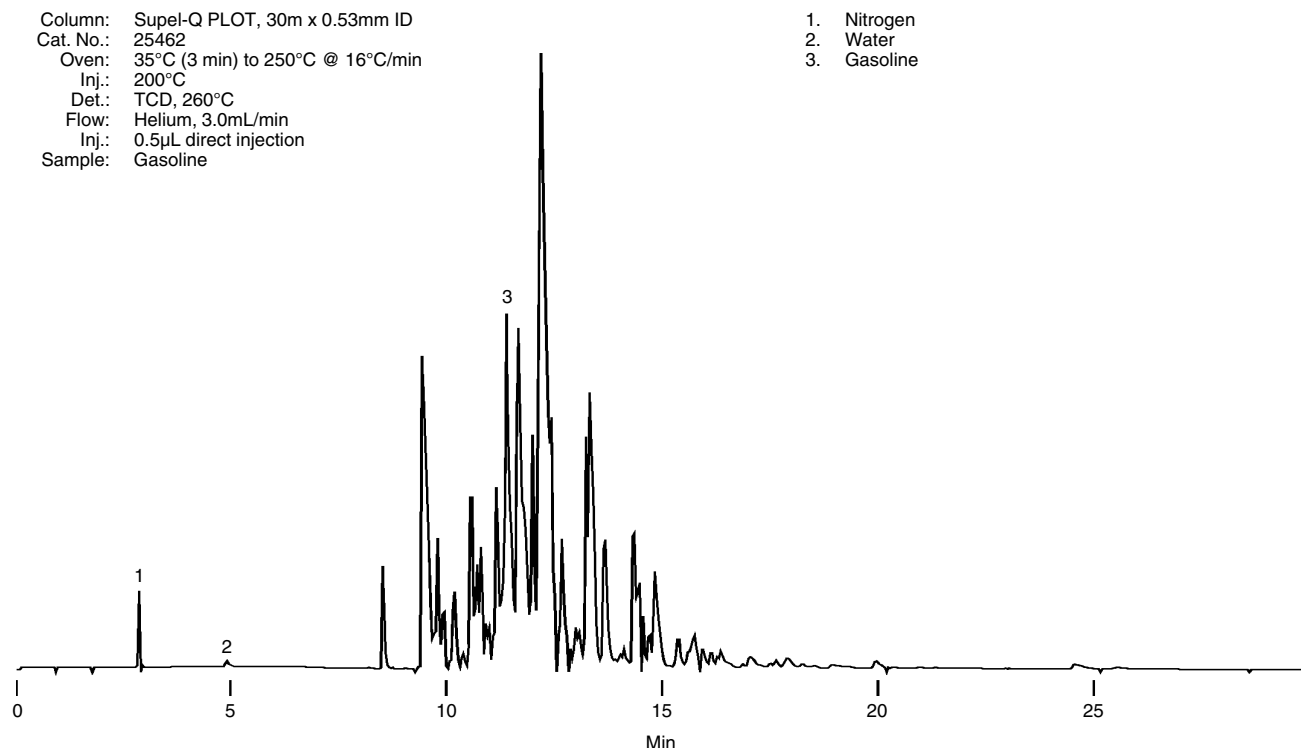
Supelco PLOT columns are individually tested for efficiency, inertness, and retention. Each column is shipped with a chromatogram demonstrating column performance that can be expected.

#### Supel-Q PLOT Columns

The Supel-Q PLOT is an appropriate choice for resolving carbon dioxide and C1 to C4 hydrocarbons, semi-volatiles, light fuels, gases and water in heavier fuels, alcohols, nitriles, and sulfur analytes with above ambient temperatures.

The Supel-Q PLOT contains a spherical, porous divinylbenzene (DVB) polymer identical to Porapak Q. By synthesizing our own polymer particles, Supelco is able to control particle size and uniformity, pore size, and film thickness for manufacturing a quality column. Supel-Q has a multiporous pore structure that allows for fast kinetic applications without the loss of efficiency. The inert surface chemistry of this DVB porous polymer permits a wider range of molecular sized analytes, with different functional groups associated with the molecules, to be analyzed.

**Figure A. Supel-Q PLOT Column Water in Gasoline**



794-0623

## Ordering Information:

### Supel-Q PLOT

Dimension	Max. Temp.	Cat. No.
30m x 0.32mm ID	250°C	24242
30m x 0.53mm ID	250°C	25462

<sup>1</sup> A proprietary procedure fixes particles to the fused silica tubing and ensures they will not be dislodged in normal use. Manufactured under US patents 5,599,445; 5,607,580; 5,609,756; 5,620,603; and 5,630,937.

#### Trademark

Porapak - Waters Associates, Inc.

For expert answers to your questions contact our Technical Service Department:

Phone **800-359-3041, 814-359-3041**

Fax **800-359-3044, 814-359-5468**

E-mail **techservice@sial.com**

To download Supelco's free technical literature visit us at **[sigma-aldrich.com/supelco-literature](http://sigma-aldrich.com/supelco-literature)**

[sigma-aldrich.com/supelco](http://sigma-aldrich.com/supelco)

**Order/Customer Service** 800-247-6628, 800-325-3010 • Fax 800-325-5052 • E-mail [supelco@sial.com](mailto:supelco@sial.com)

**Technical Service** 800-359-3041, 814-359-3041 • Fax 800-359-3044, 814-359-5468 • E-mail [techservice@sial.com](mailto:techservice@sial.com)

**SUPELCO • 595 North Harrison Road, Bellefonte, PA 16823-0048 • 814-359-3441**



*We are committed to the success of our Customers, Employees and Shareholders through leadership in Life Science, High Technology and Service.*

The SIGMA-ALDRICH Family  SIGMA  ALDRICH  Fluka  Riedel-deHaen  SUPELCO

© 2003 Sigma-Aldrich Co. Printed in USA. Supelco brand products are sold through Sigma-Aldrich, Inc. Sigma-Aldrich, Inc. warrants that its products conform to the information contained in this and other Sigma-Aldrich publications. Purchaser must determine the suitability of the product(s) for their particular use. Additional terms and conditions may apply. Please see reverse side of the invoice or packing slip.



T403148  
GFH