

# Application Report 51

## 37-Component FAME Mix on the Equity™-1

This application demonstrates the separation of our 37-component fatty acid methyl ester (FAME) reference standard on the 30m x 0.25mm ID x 0.25µm Equity-1 capillary column. On nonpolar columns, FAMES elute by boiling point. For acids of each carbon chain length, unsaturated isomers elute prior to the saturates in order of decreasing unsaturation.

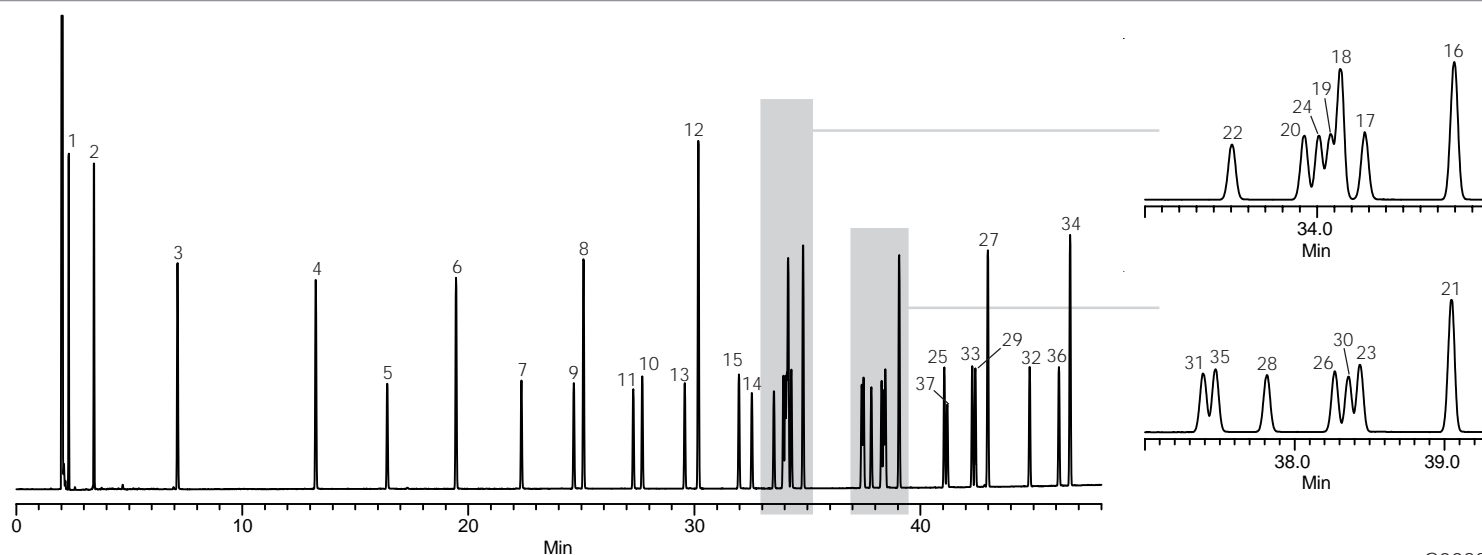
### Key Words

fatty acids, methyl esters, Equity, 28046-U, 24056

Author: Katherine Stenerson

Acquisition System: GC9499

Notebook Reference: 1435-64



G002232

### Conditions

Column: Equity-1, 30m x 0.25mm ID, 0.25µm  
Cat. No.: 28046-U  
Oven: 100°C (5 min), 4°C/min to 250°C (5 min)  
Inj.: 250°C  
Det.: FID, 300°C  
Carrier: Helium, 1mL/min constant  
Injection: 1µL, 100:1 split  
Liner: 4mm ID, cup style  
Sample: Supelco 37-component FAME mix (cat. no. 24056)

### Peak IDs

1. Butyric (C4:0)
2. Caproic (C6:0)
3. Caprylic (C8:0)
4. Capric (C10:0)
5. Undecanoic (C11:0)
6. Lauric (C12:0)
7. Tridecanoic (C13:0)
8. Myristic (C14:0)
9. Myristoleic (C14:1)
10. Pentadecanoic (C15:0)
11. cis-10-Pentadecenoic (C15:1)
12. Palmitic (C16:0)
13. Palmitoleic (C16:1)
14. Heptadecanoic (C17:0)
15. cis-10-Heptadecenoic (C17:1)
16. Stearic (C18:0)
17. Elaidic (C18:1n9t)
18. Oleic (C18:1n9c)
19. Linolelaidic (C18:2n6t)
20. Linoleic (C18:2n6c)
21. Arachidic (C20:0)
22. γ-Linolenic (C18:3n6)
23. cis-11-Eicosenoic (C20:1)
24. Linolenic (C18:3n3)
25. Heneicosanoic (C21:0)
26. cis-11,14-Eicosadienoic (C20:2)
27. Behenic (C22:0)
28. cis-8,11,14-Eicosatrienoic (C20:3n6)
29. Erucic (C22:1n9)
30. cis-11,14,17-Eicosatrienoic (C20:3n3)
31. Arachidonic (C20:4n6)
32. Tricosanoic (C23:0)
33. cis-13,16-Docosadienoic (C22:2)
34. Lignoceric (C24:0)
35. cis-5,8,11,14,17-Eicosapentaenoic (C20:5n3)
36. Nervonic (C24:1)
37. cis-4,7,10,13,16,19-Docosahexaenoic (C22:6n3)

Equity is a trademark of Sigma-Aldrich Co.