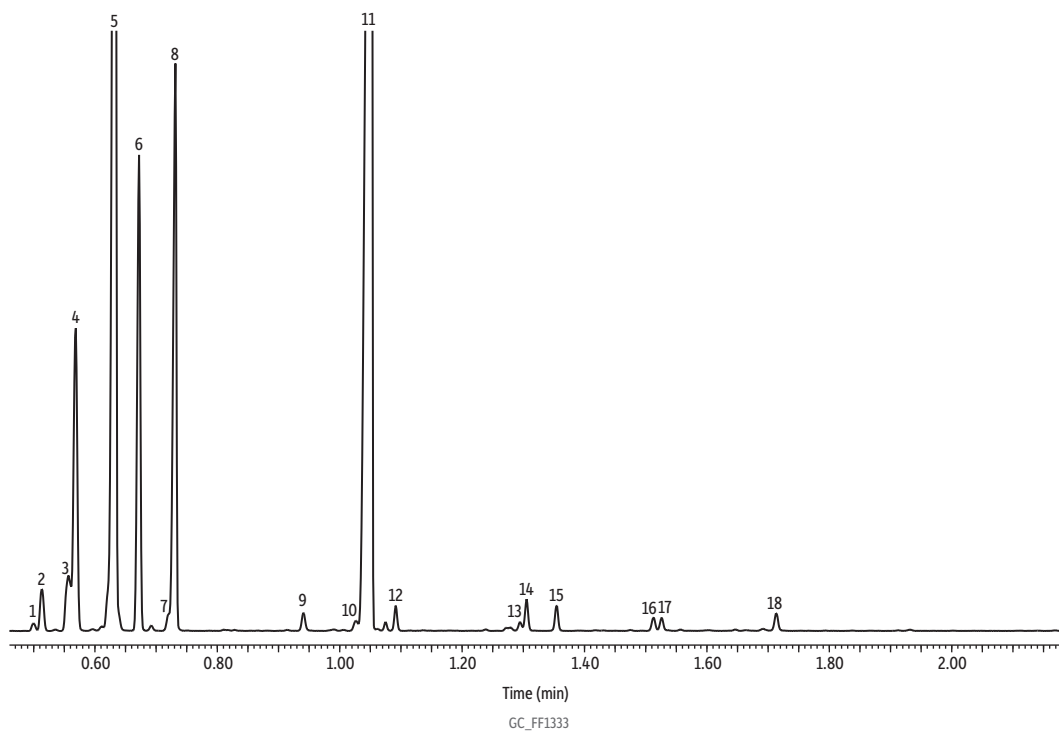


Bergamot Oil on Rxi-5Sil MS (10 m, 0.15 mm ID, 0.15 µm)



Peaks	tr (min)	Peaks	tr (min)
1. α-Thujene	0.500	10. Z-Citral	1.026
2. α-Pinene	0.513	11. Bergamol	1.052
3. Sabinene	0.557	12. E-Citral	1.092
4. β-Pinene	0.568	13. 2-Carene	1.295
5. D-Limonene	0.632	14. Neryl acetate	1.305
6. γ-Terpinene	0.672	15. Geranyl acetate	1.355
7. Terpinolene	0.720	16. Caryophyllene	1.513
8. Linalool	0.731	17. α-Bergamotene	1.526
9. α-Terpineol	0.941	18. β-Bisabolene	1.714

Column Rxi-5Sil MS, 10 m, 0.15 mm ID, 0.15 µm (cat.# 43815)
Sample Bergamot oil
Diluent: Acetone
Conc.: 1%
Injection
Inj. Vol.: 1 µL split (split ratio 100:1)
Liner: Topaz 4.0 mm ID Precision inlet liner w/wool (cat.# 23305)
Inj. Temp.: 250 °C
Oven
Oven Temp.: 100 °C to 300 °C at 45 °C/min to 320 °C at 30 °C/min (hold 5 min)
Carrier Gas He, constant flow
Flow Rate: 1.01 mL/min
Detector MS
Mode: Scan
Scan Program:

Group	Start Time (min)	Scan Range (amu)	Scan Rate (scans/sec)
1	1.00	35-500	11

Transfer Line Temp.: 300 °C
Analyzer Type: Quadrupole
Source Type: Inert
Source Temp.: 230 °C
Quad Temp.: 150 °C
Instrument Agilent 7890A GC & 5975C MSD
Notes All peaks were identified using the NIST MS EI spectra library (2005).