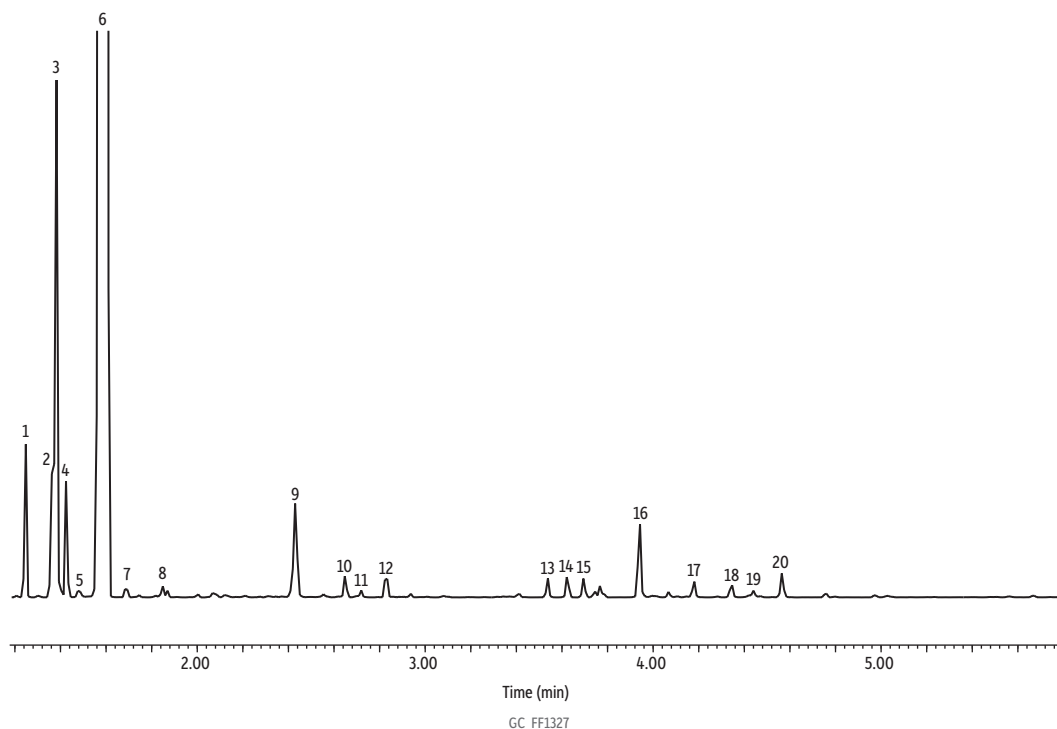


Grapefruit Oil on Rxi-5Sil MS (20 m, 0.18 mm ID, 0.18 µm)



Peaks	tr (min)	Peaks	tr (min)
1. α-Pinene	1.248	11. Carvone	2.720
2. β-Phellandrene	1.362	12. E-Citral	2.834
3. β-Myrcene	1.383	13. Geranyl acetate	3.538
4. Octanal	1.424	14. Copaene	3.621
5. α-Phellandrene	1.476	15. β-Cubebene	3.694
6. D-Limonene	1.601	16. Caryophyllene	3.943
7. γ-Terpinene	1.683	17. α-Caryophyllene	4.181
8. Linalool	1.849	18. Germacrene D	4.347
9. Decanal	2.430	19. Bicyclogermacrene	4.440
10. Z-Citral	2.647	20. δ-Cadinene	4.564

Column Rxi-5Sil MS, 20 m, 0.18 mm ID, 0.18 µm (cat.# 43602)
Sample Grapefruit oil
Diluent: Acetone
Conc.: 5%
Injection
 Inj. Vol.: 1 µL split (split ratio 100:1)
 Liner: Topaz 4.0 mm ID Precision inlet liner w/wool (cat.# 23305)
 Inj. Temp.: 250 °C
Oven
 Oven Temp.: 100 °C (hold 0.25 min) to 320 °C at 17.5 °C/min (hold 10 min)
Carrier Gas He, constant flow
 Flow Rate: 1.01 mL/min
Detector MS
 Mode: Scan
 Scan Program:

Group	Start Time (min)	Scan Range (amu)	Scan Rate (scans/sec)
1	1.00	35-500	5

Transfer Line Temp.: 300 °C
 Analyzer Type: Quadrupole
 Source Type: Inert
 Source Temp.: 230 °C
 Quad Temp.: 150 °C
Instrument Agilent 7890A GC & 5975C MSD
Notes All peaks were identified using the NIST MS EI spectra library (2005).