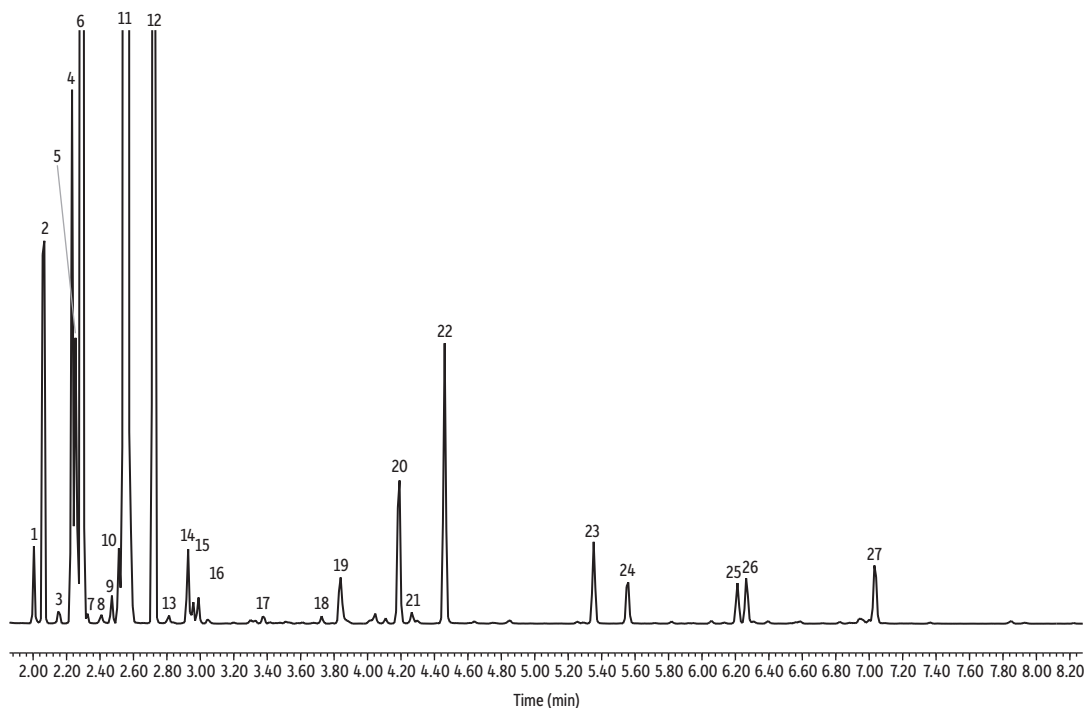


Lemon Oil on Rxi-5Sil MS



GC_FF1310

Peaks	tr (min)	Peaks	tr (min)
1. α -Thujene	2.005	14. Terpinolene	2.927
2. α -Pinene	2.066	15. Linalool	2.958
3. Camphene	2.153	16. Nonanal	2.989
4. β -Myrcene	2.233	17. Citronellal	3.376
5. β -Phellandrene	2.254	18. Terpinen-4-ol	3.726
6. β -Pinene	2.293	19. α -Terpineol	3.838
7. Octanal	2.326	20. Z-Citral	4.188
8. α -Phellandrene	2.408	21. Geraniol	4.264
9. α -Terpinene	2.471	22. E-Citral	4.466
10. <i>p</i> -Cymene	2.513	23. Neryl acetate	5.353
11. D-Limonene	2.561	24. Geranyl acetate	5.556
12. γ -Terpinene	2.725	25. β -Caryophyllene	6.212
13. <i>cis</i> - β -Terpineol	2.812	26. α -Bergamotene	6.266
		27. β -Bisabolene	7.034

Column Rxi-5Sil MS, 30 m, 0.25 mm ID, 0.25 μ m (cat.# 13623)
Sample Lemon oil
Diluent: Acetone
Conc.: 5%
Injection
Inj. Vol.: 1 μ L split (split ratio 100:1)
Liner: Topaz 4.0 mm ID Precision inlet liner w/wool (cat.# 23305)
Inj. Temp.: 250 $^{\circ}$ C
Oven
Oven Temp.: 100 $^{\circ}$ C to 300 $^{\circ}$ C at 11 $^{\circ}$ C/min (hold 10 min)
Carrier Gas He, constant flow
Flow Rate: 1.31 mL/min
Detector MS
Mode: Scan
Scan Program:

Group	Start Time (min)	Scan Range (amu)	Scan Rate (scans/sec)
1	1.00	35-500	5

Transfer Line Temp.: 300 $^{\circ}$ C
Analyzer Type: Quadrupole
Source Type: Inert
Source Temp.: 230 $^{\circ}$ C
Quad Temp.: 150 $^{\circ}$ C
Instrument Agilent 7890A GC & 5975C MSD
Notes All peaks were identified using the NIST MS EI spectra library (2005).