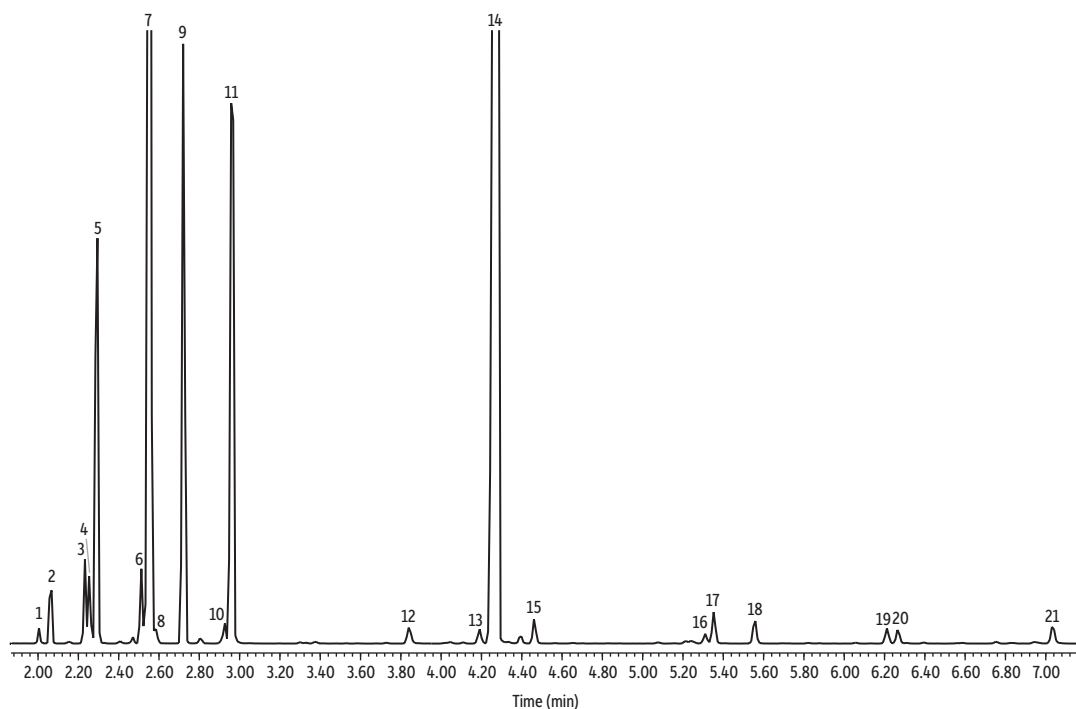


Bergamot Oil on Rxi-5Sil MS



GC_FF1309

Peaks	tr (min)	Peaks	tr (min)
1. α -Thujene	2.005	11. Linalool	2.963
2. α -Pinene	2.067	12. α -Terpineol	3.841
3. Sabinene	2.233	13. Z-Citral	4.191
4. β -Myrcene	2.253	14. Bergamol	4.276
5. β -Pinene	2.296	15. E-Citral	4.462
6. <i>p</i> -Cymene	2.516	16. 2-Carene	5.310
7. D-Limonene	2.553	17. Neryl acetate	5.353
8. 3-Carene	2.585	18. Geranyl acetate	5.557
9. γ -Terpinene	2.724	19. Caryophyllene	6.212
10. Terpinolene	2.926	20. α -Bergamotene	6.266
		21. β -Bisabolene	7.034

Column Rxi-5Sil MS, 30 m, 0.25 mm ID, 0.25 μ m (cat.# 13623)
Sample Bergamot oil
Diluent: Acetone
Conc.: 5%
Injection
Inj. Vol.: 1 μ L split (split ratio 100:1)
Liner: Topaz 4.0 mm ID Precision inlet liner w/wool (cat.# 23305)
Inj. Temp.: 250 °C
Oven
Oven Temp.: 100 °C to 300 °C at 11 °C/min (hold 10 min)
Carrier Gas He, constant flow
Flow Rate: 1.31 mL/min
Detector MS
Mode: Scan
Scan Program:

Group	Start Time (min)	Scan Range (amu)	Scan Rate (scans/sec)
1	1.00	35-500	5

Transfer Line Temp.: 300 °C
Analyzer Type: Quadrupole
Source Type: Inert
Source Temp.: 230 °C
Quad Temp.: 150 °C
Instrument Agilent 7890A GC & 5975C MSD
Notes All peaks were identified using the NIST MS EI spectra library (2005).