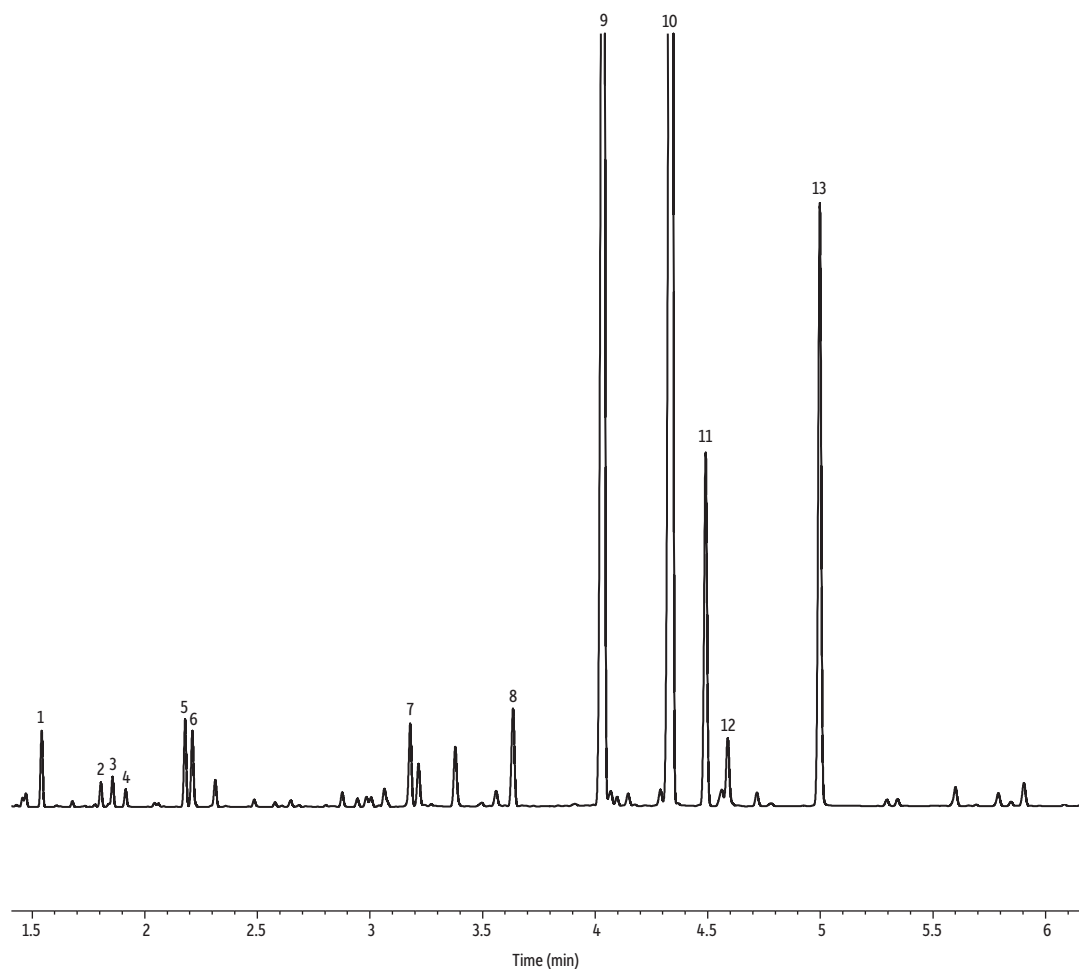


Lemongrass Oil on Rtx-Wax



GC_FF1306

Peaks	tr (min)	Peaks	tr (min)
1. Camphene	1.543	7. Linalool	3.179
2. D-Limonene	1.806	8. Caryophyllene	3.636
3. β-Ocimene	1.858	9. Z-Citral	4.038
4. α-Ocimene	1.916	10. E-Citral	4.340
5. 4-Nonanone	2.180	11. Geranyl acetate	4.490
6. Methyl heptenone	2.212	12. α-Amorphene	4.588
		13. Geraniol	4.997

Column Rtx-Wax, 30 m, 0.32 mm ID, 0.25 μm (cat.# 12424)
Sample Lemongrass oil
Diluent: Acetone
Conc.: 5%
Injection
 Inj. Vol.: 1 μL split (split ratio 100:1)
 Liner: Topaz 4.0 mm ID Precision inlet liner w/wool (cat.# 23305)
 Inj. Temp.: 230 °C
Oven
 Oven Temp.: 100 °C (hold 0.5 min) to 250 °C at 16 °C/min (hold 10 min)
Carrier Gas H₂, constant flow
 Flow Rate: 2 mL/min
Detector FID @ 250 °C
 Constant Column +
 Constant Make-up: 52 mL/min
 Make-up Gas Type: N₂
 Hydrogen flow: 40 mL/min
 Air flow: 400 mL/min
 Data Rate: 50 Hz
Instrument Agilent 7890A GC
Notes All peaks were identified using the NIST MS EI spectra library (2005).