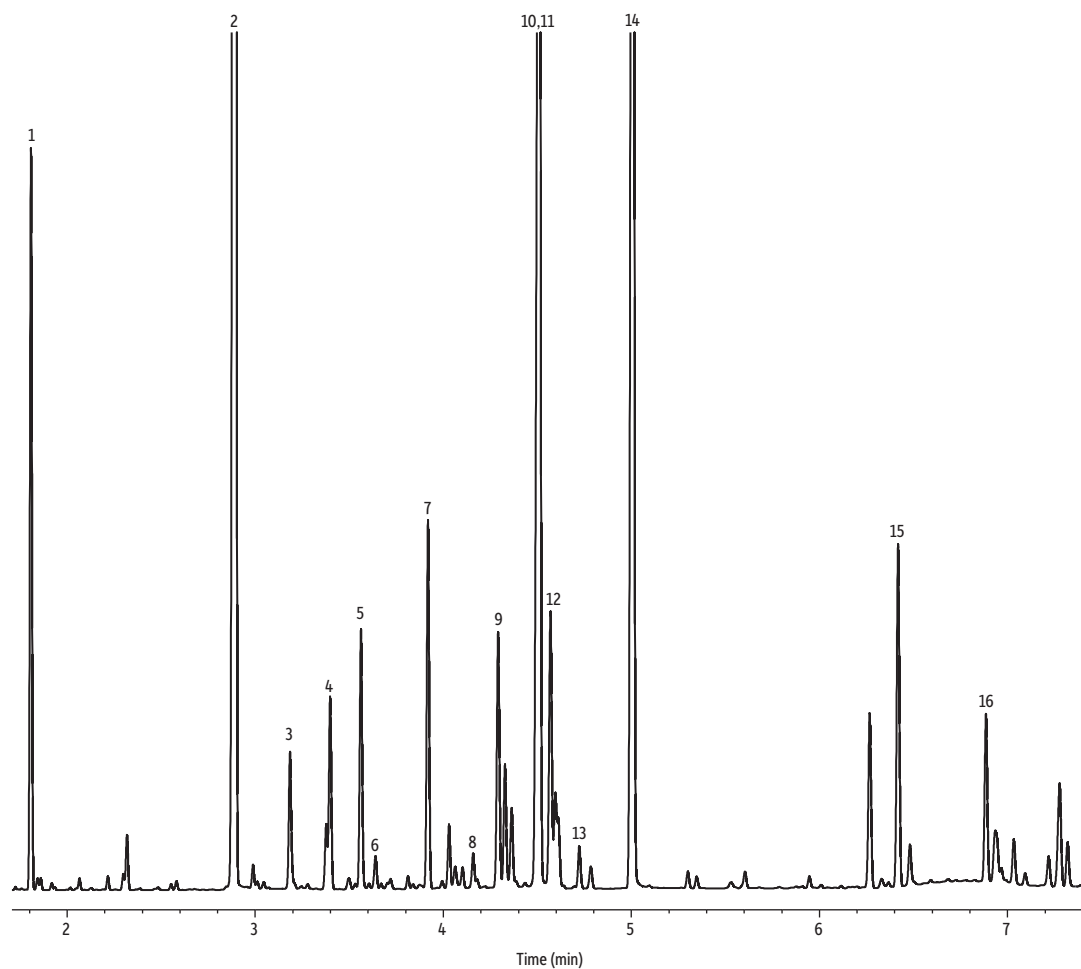


Citronella Java Oil on Rtx-Wax



GC_FF1296

Peaks	tr (min)	Peaks	tr (min)
1. D-Limonene	1.809	9. Germacrene D	4.290
2. Citronellal	2.092	10. Geranyl acetate	4.509
3. Linalool	3.184	11. β -Citronellol	4.509
4. Isopulegol	3.397	12. δ -Cadinene	4.569
5. γ -Elemene	3.561	13. Nerol	4.722
6. β -Caryophyllene	3.638	14. Geraniol	5.006
7. Citronellyl propionate	3.917	15. α -Elemol	6.417
8. α -Terpineol	4.029	16. Eugenol	6.884

Column Rtx-Wax, 30 m, 0.32 mm ID, 0.25 μ m (cat.# 12424)
Sample Citronella java oil
Diluent: Acetone
Conc.: 5%
Injection
 Inj. Vol.: 1 μ L split (split ratio 100:1)
 Liner: Topaz 4.0 mm ID Precision inlet liner w/wool (cat.# 23305)
 Inj. Temp.: 230 °C
Oven
 Oven Temp.: 100 °C (hold 0.5 min) to 250 °C at 16 °C/min (hold 10 min)
Carrier Gas Hz, constant flow
Flow Rate: 2 mL/min
Detector FID @ 250 °C
Constant Column +
 Constant Make-up: 52 mL/min
 Make-up Gas Type: N₂
 Hydrogen flow: 40 mL/min
 Air flow: 400 mL/min
 Data Rate: 50 Hz
Instrument Agilent 7890A GC
Notes All peaks were identified using the NIST MS EI spectra library (2005).