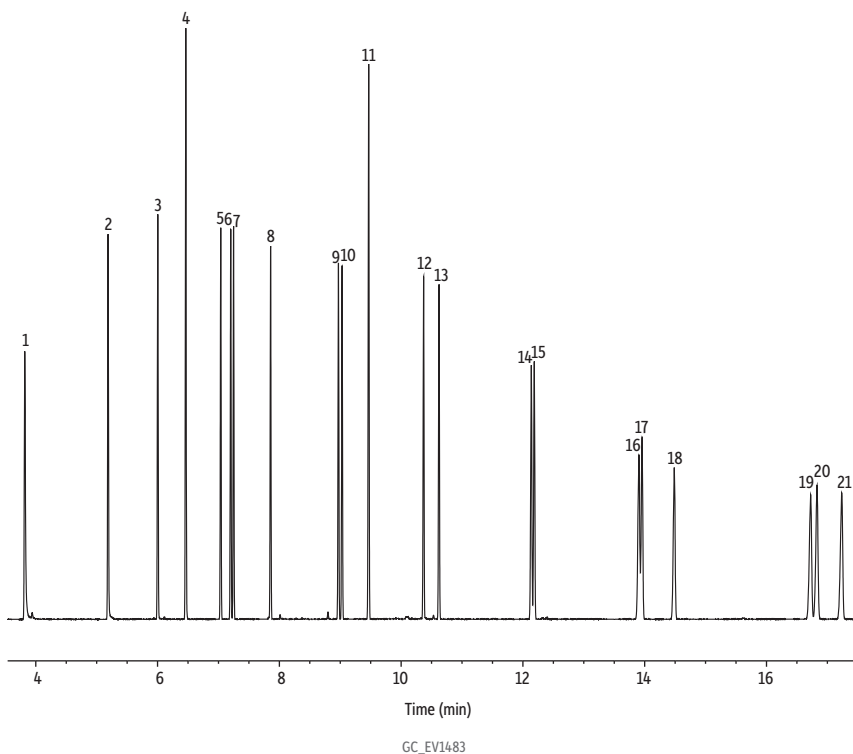


NJ DEP EPH Aromatics on Rxi-5Sil MS

• Fast analysis time.



Column Rxi-5Sil MS, 30 m, 0.32 mm ID, 0.25 µm (cat.# 13624)
Sample NJ DEP EPH 10/08 rev. 2 aromatics calibration standard (cat.# 30541)
 MA fractionation surrogate spike mix (cat.# 31480)
 o-Terphenyl (cat.# 31097)
 Methylene chloride

Diluent:
Injection
 Inj. Vol.: 1 µL splitless
 Liner: Topaz 4 mm ID single taper inlet liner w/ wool (cat.# 23303)
 Inj. Temp.: 300 °C

Oven
 Oven Temp.: 55 °C (hold 1.5 min) to 250 °C at 20 °C/min to 330 °C at 6 °C/min (hold 2.0 min)

Carrier Gas
 Carrier Gas: He, constant flow
 Flow Rate: 5 mL/min

Detector
 Detector: FID @ 340 °C

Make-up Gas
 Make-up Gas: 45 mL/min

Make-up Gas
 Type: H₂

Hydrogen flow: 40 mL/min
Air flow: 450 mL/min
Data Rate: 50 Hz

Instrument Agilent 7890A GC

Peaks	tr (min)	Conc. (µg/mL)
1. 1,2,3-Trimethylbenzene	3.81	12.5
2. Naphthalene	5.18	12.5
3. 2-Methylnaphthalene	6.00	12.5
4. 2-Fluorobiphenyl (SS)	6.48	20.0
5. Acenaphthylene	7.03	12.5
6. 2-Bromonaphthalene (SS)	7.20	20.0
7. Acenaphthene	7.24	12.5
8. Fluorene	7.85	12.5
9. Phenanthrene	8.97	12.5
10. Anthracene	9.03	12.5
11. o-Terphenyl (SS)	9.46	20.0
12. Fluoranthene	10.36	12.5
13. Pyrene	10.62	12.5
14. Benz[a]anthracene	12.13	12.5
15. Chrysene	12.18	12.5
16. Benzo[b]fluoranthene	13.90	12.5
17. Benzo[k]fluoranthene	13.95	12.5
18. Benzo[a]pyrene	14.48	12.5
19. Indeno[1,2,3-cd]pyrene	16.72	12.5
20. Dibenzo[a,h]anthracene	16.82	12.5
21. Benzo[ghi]perylene	17.23	12.5