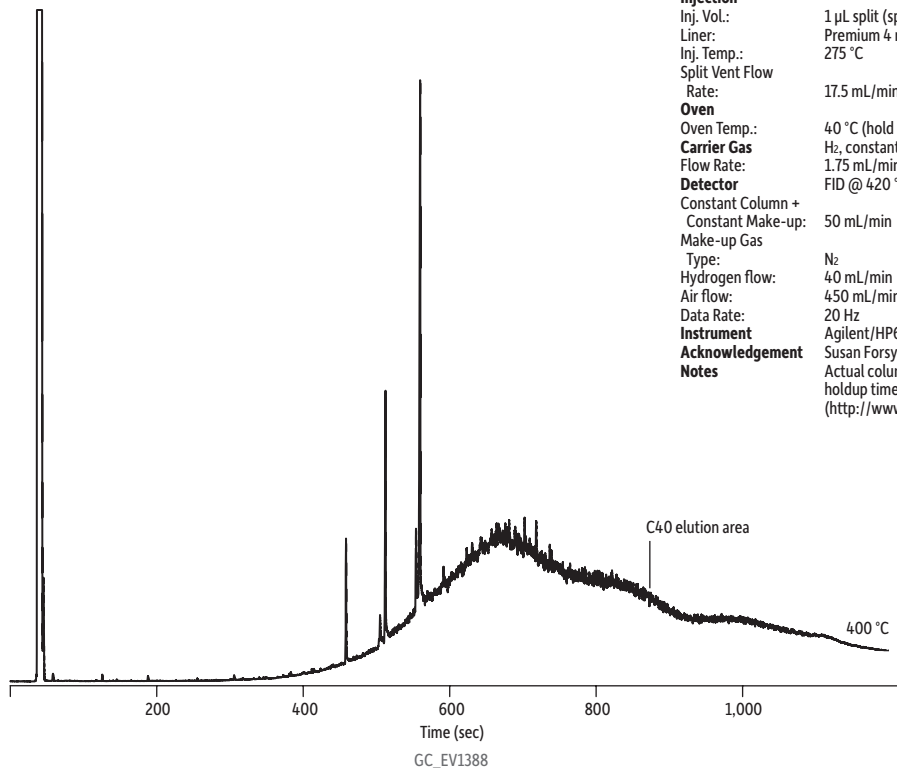


Florida Beach Tarball 6 on Rxi®-5HT (15 m x 0.25 mm x 0.10 µm)



Column Rxi®-5HT, 15 m, 0.25 mm ID, 0.10 µm (cat.# 13905)
Sample Tarball 6 - Florida Gulf beach
Diluent: Carbon disulfide
Injection
Inj. Vol.: 1 µL split (split ratio 10:1)
Liner: Premium 4 mm Precision liner w/wool (cat.# 23305.5)
Inj. Temp.: 275 °C
Split Vent Flow
Rate: 17.5 mL/min
Oven
Oven Temp.: 40 °C (hold 0.1 min) to 400 °C at 19.6 °C/min (hold 1.53 min)
Carrier Gas Hz, constant flow
Flow Rate: 1.75 mL/min
Detector FID @ 420 °C
Constant Column +
Constant Make-up: 50 mL/min
Make-up Gas
Type: N₂
Hydrogen flow: 40 mL/min
Air flow: 450 mL/min
Data Rate: 20 Hz
Instrument Agilent/HP6890 GC
Acknowledgement Susan Forsyth - Walton County, FL - Tarball sample
Notes Actual column length was calculated to be 15.7 m using holdup time and EZGC® flow calculator (<http://www.restek.com/ezgc-mtfc>).