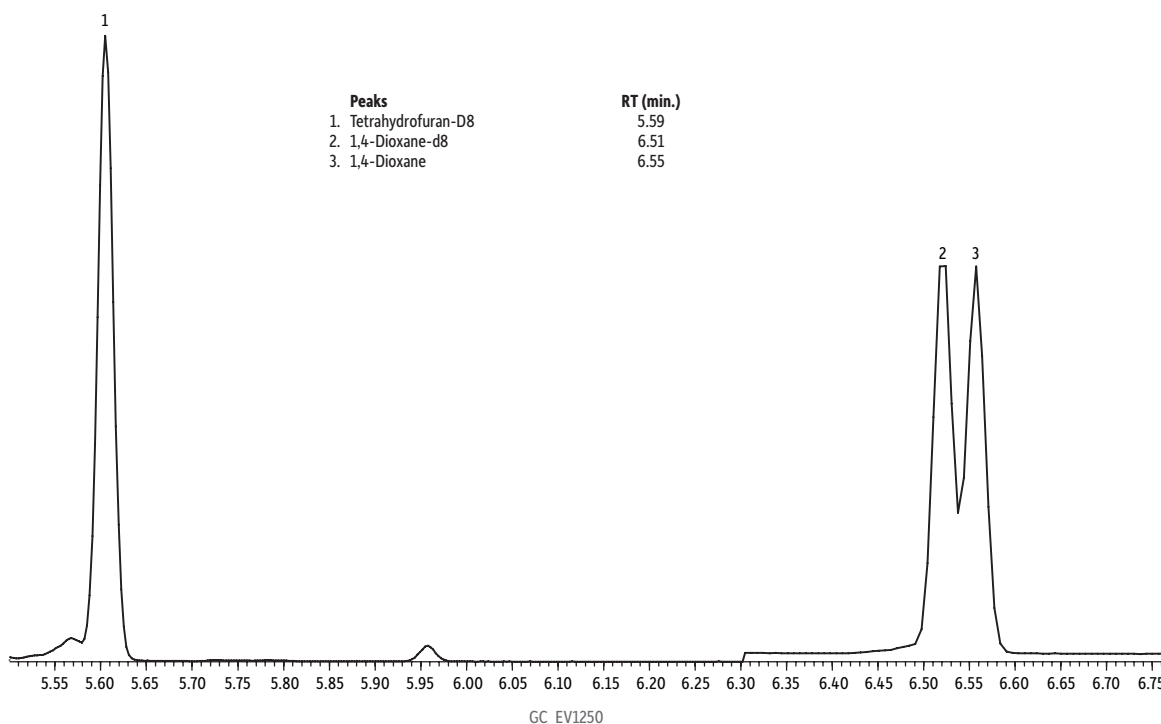


EPA 522 Analyte Mix on Rtx®-624 w/5 m Integra-Guard® (30 m x 0.25 mm x 1.4 µm)



Peaks	RT (min.)
1. Tetrahydrofuran-D8	5.59
2. 1,4-Dioxane-d8	6.51
3. 1,4-Dioxane	6.55

GC_EV1250

Column Rtx®-624 w/5m Integra-Guard®, 30 m, 0.25 mm ID, 1.40 µm (cat.# 10968-124)
Sample Tetrahydrofuran-d8 (cat.# 30112), 1,4-Dioxane-d8 (cat.# 30614)
 1,4-Dioxane (cat.# 30287)
Diluent: Dichloromethane
Conc.: 50 ng/mL
Injection
 Inj. Vol.: 10 µL splitless (hold 1 min.)
 Liner: Premium 4 mm single taper/gooseneck w/wool (cat.# 23303.5)
 Inj. Temp.: 120 °C
 Purge Flow: 80 mL/min.
Oven
 Oven Temp: 35 °C (hold 1 min.) to 120 °C at 12 °C/min. (hold 1 min.)
Carrier Gas
 Carrier Gas: He, constant flow
 Flow Rate: 1.4 mL/min.
 Linear Velocity: 30.556 cm/sec. @ 35 °C
Detector
 Mode: MS
 SIM Program: SIM

Group	Start Time (min.)	Ion(s)	Dwell (ms)
1	5.2	46,78,80 m/z	50
2	6.3	96,88,64,62,58 m/z	75

Transfer Line Temp.: 280 °C
 Analyzer Type: Quadrupole
 Source Temp.: 230 °C
 Quad Temp.: 150 °C
 Solvent Delay Time: 5.2 min.
 Tune Type: BFB
 Ionization Mode: EI
Instrument Agilent 7890A GC & 5975C MSD
Notes Large volume splitless injection for EPA Method 522 without a PTV and without a press-fit connector for the retention gap.
Acknowledgement M. Misselwitz, J. Cochran