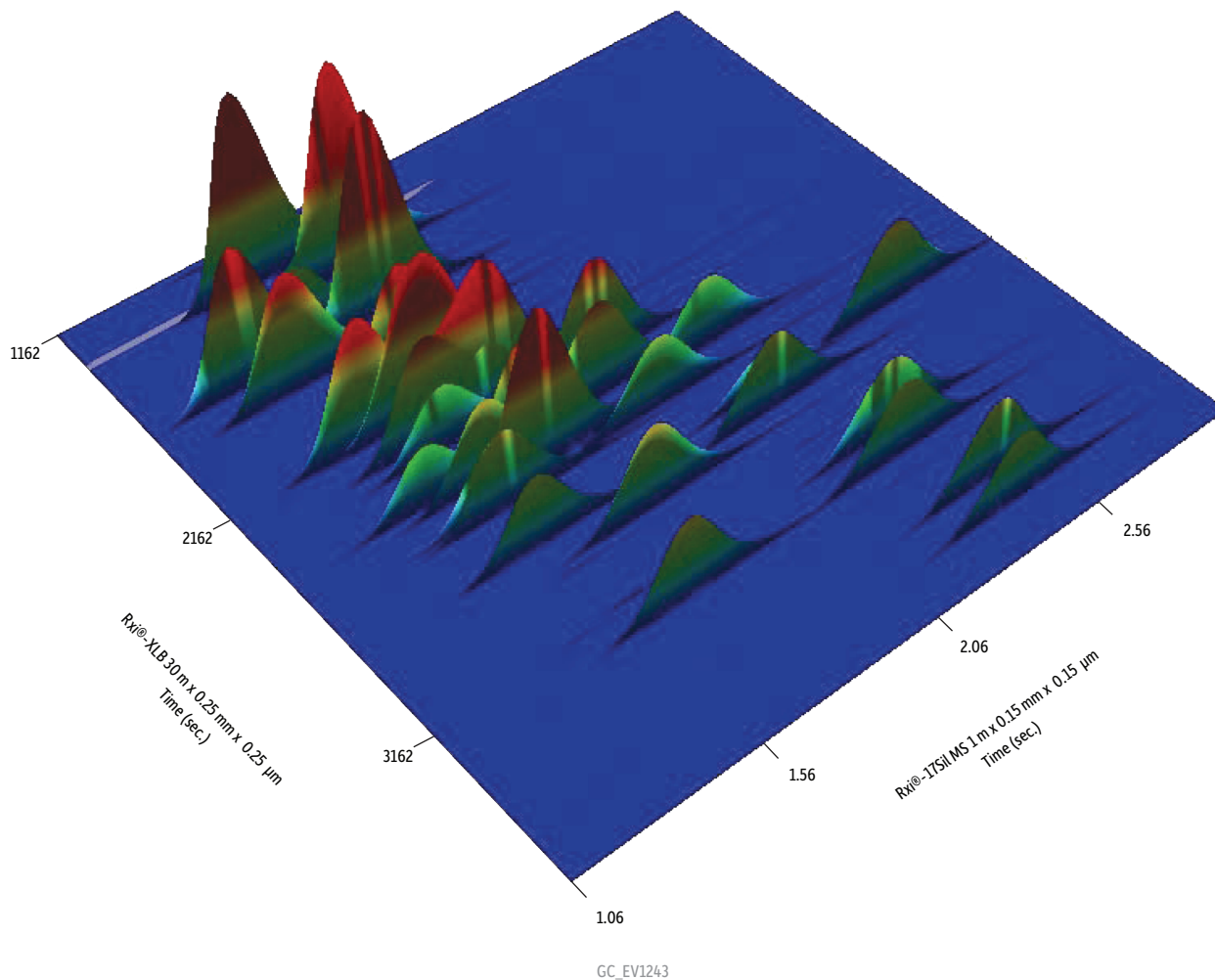


Organochlorine Pesticides, PCBs, and BFRs on Rxi®-XLB and Rxi®-17Sil MS (GCxGC-ECD)



Column Rxi®-XLB 30 m, 0.25 mm ID, 0.25 µm (cat.# 13723)
Rxi®-17Sil MS 1 m, 0.15 mm ID, 0.15 µm (cat.# 43820)
with IP deactivated guard column 0.2 m, 0.15 mm ID

Sample PBDE mix (cat.# 33098)
PCB congener mix, Method 8082A (cat.# 32416)
Organochlorine pesticide mix AB #1 (cat.# 32291)

Diluent: Isooctane
Conc.: 250 pg/µL

Injection
Inj. Vol.: 1.0 µL splitless (hold 1.0 min.)
Liner: Premium 4 mm single taper inlet liner w/wool (cat.# 23303.5)

Inj. Temp.: 250 °C
Purge Flow: 20 mL/min.

Oven
Oven Temp: Rxi®-XLB: 80 °C (hold 1 min.) to 120 °C at 10 °C/min. to 300 °C at 3 °C/min.
Rxi®-17Sil MS: 85 °C (hold 1 min.) to 125 °C at 10 °C/min. to 305 °C at 3 °C/min.

Carrier Gas He, corrected constant flow (2.0 mL/min.)

Modulation
Modulator Temp. Offset: 20 °C
Second Dimension Separation Time: 3.5 sec.
Hot Pulse Time: 1.25 sec.
Cool Time between Stages: 0.50 sec.
Detector µ-ECD @ 325 °C
Data Rate: 50 Hz

Instrument Notes
Agilent/HP6890 GC
The Rxi®-17Sil MS column (cat.# 43820) is a 10 m column. A 1 m section was used as a second dimension column. Guard column was used as transfer line from second dimension column to detector and connected using a Siltek® treated universal Press-Tight® connector (cat.# 20480).