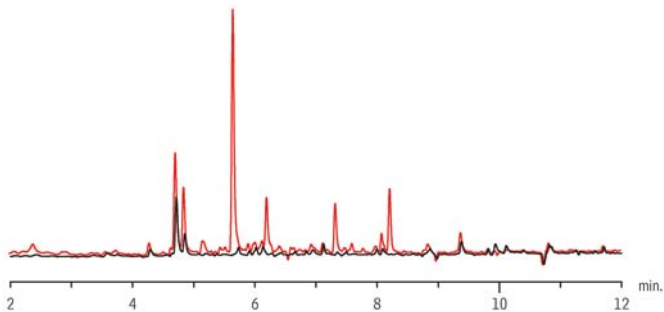


Florisol® Cartridge Comparison Rtx®-CLPesticides2

Column: Rtx®-CLPesticides2, 30m, 0.32mm ID, 0.50 μ m (cat.# 11325)
Instrument: Shimadzu GC2010
Sample: Florisol® Cartridge Check Standard (cat.# 32017)
traces shown on same scale
black trace: Restek 6mL/1g Florisol® SPE Tube (cat.# 24034)
red trace: competitor 6mL/1g Florisol® SPE Tube
Inj.: 1.0 μ L, splitless (hold 0.75 min.), 3.5mm gooseneck splitless liner (cat.# 22286)
Inj. temp.: 275°C
Carrier gas: helium, constant linear velocity
Linear velocity: 65cm/sec.
Oven temp.: 120°C (hold 1 min.) to 300°C @ 10°C/min. (hold 6 min.)
Det: ECD @ 330°C



GC_EV01093