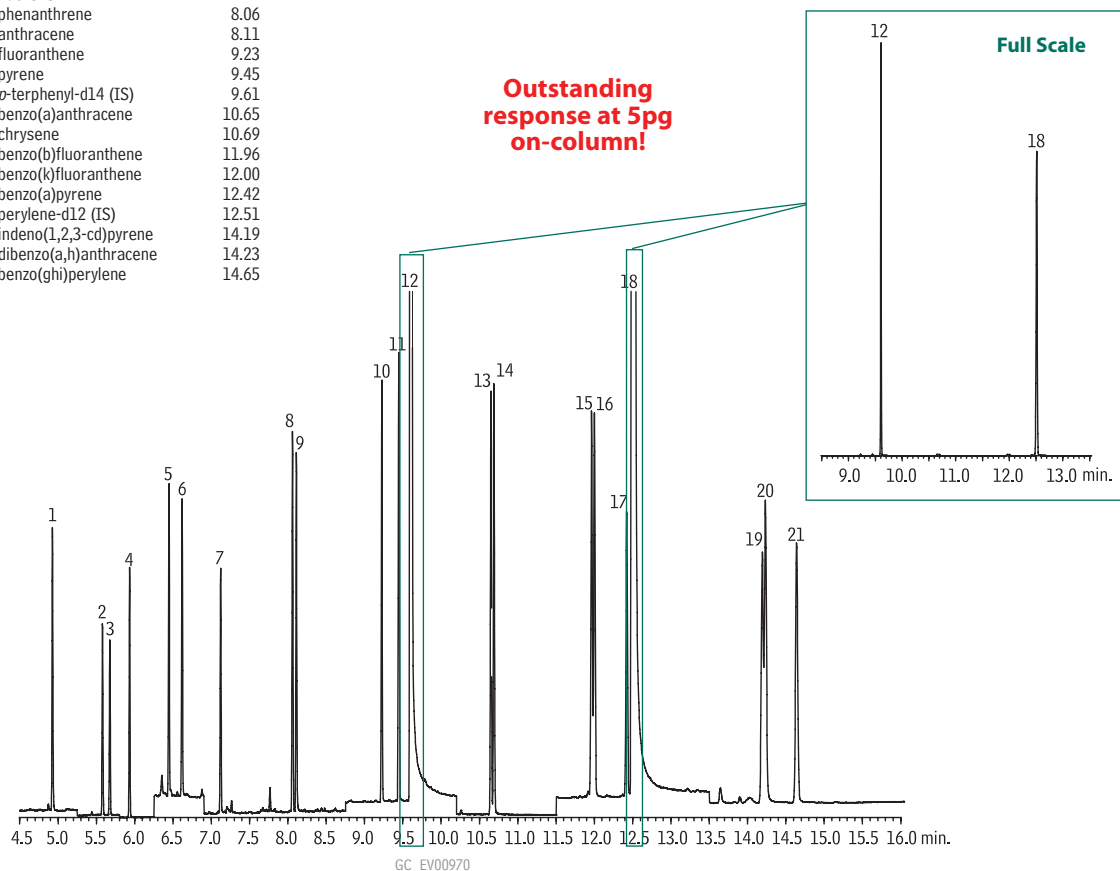


Polycyclic Aromatic Hydrocarbons

Rxi®-5Sil MS

Peak List	Retention Time
1. naphthalene	4.93
2. 2-methylnaphthalene	5.58
3. 1-methylnaphthalene	5.68
4. 2-fluorobiphenyl (s)	5.93
5. acenaphthylene	6.45
6. acenaphthene	6.62
7. fluorene	7.12
8. phenanthrene	8.06
9. anthracene	8.11
10. fluoranthene	9.23
11. pyrene	9.45
12. p-terphenyl-d14 (IS)	9.61
13. benzo(a)anthracene	10.65
14. chrysene	10.69
15. benzo(b)fluoranthene	11.96
16. benzo(k)fluoranthene	12.00
17. benzo(a)pyrene	12.42
18. perylene-d12 (IS)	12.51
19. indeno(1,2,3-cd)pyrene	14.19
20. dibenzo(a,h)anthracene	14.23
21. benzo(ghi)perylene	14.65



Column: Rxi®-5Sil MS, 30m, 0.25mm ID, 0.25µm (cat.# 13623)
 Sample: PAH mix, 1µL of 0.005µg/mL (IS 2µg/mL)
 SV Calibration Mix #5 (cat.# 31011)
 1-methylnaphthalene (cat.# 31283)
 2-methylnaphthalene (cat.# 31285)
 2-fluorobiphenyl (cat.# 31091)
 Inj.: 1.0µL (5pg on-column concentration),
 4mm Drilled Uniliner® (hole near top) inlet liner w/wool (cat.# 21055-200.5),
 pulsed splitless: pulse 20psi @ 0.2 min., 60mL/min. @ 0.15 min.
 Inj. temp.: 300°C
 Carrier gas: helium, constant flow
 Flow rate: 1.4mL/min.
 Oven temp.: 50°C (hold 0.5 min.) to 290°C @ 25°C/min. to 320°C @ 5°C/min.
 Det.: MS
 Transfer line temp: 290°C
 Ionization: EI
 Mode: SIM

Single Ion Monitoring Program

Group	Time	Ion(s)	Dwell (ms)
1	4.00	128	100
2	5.25	142	100
3	5.80	172	100
4	6.25	152	100
5	6.90	166	100
6	7.60	178	100
7	8.75	202, 244	100
8	10.2	228	100
9	11.5	252, 264	100
10	13.5	276, 278	100