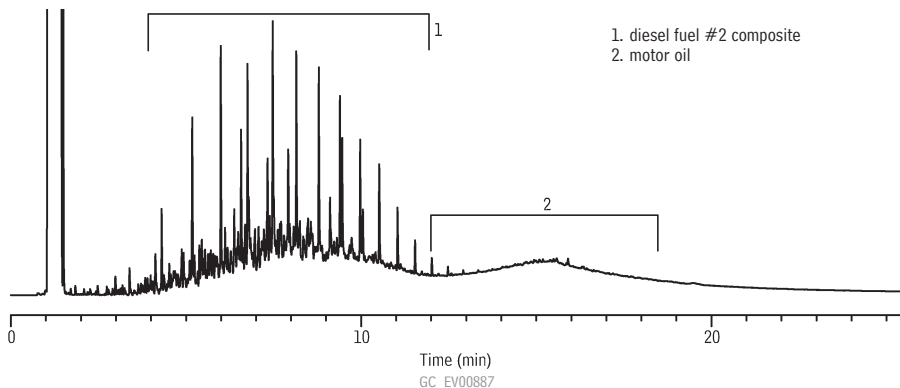


Lubrication Range Organics

Diesel Fuel #2/Motor Oil

Rxi™-1ms



Column: Rxi™-1ms, 20m, 0.18mm ID, 0.18 μ m (cat.# 13302)
Sample: Diesel #2/ Motor Oil (cat.# 31682) 5000 μ g/mL each component in hexane
Inj.: 0.5 μ L, split, split ratio 20:1, 3.5mm Precision™ inlet liner (cat.# 21021)
Instrument: Shimadzu GC-2010
Inj. temp.: 275°C
Carrier gas: hydrogen, constant pressure
Linear velocity: 55cm/sec. @ 40°C
Oven temp.: 40°C (hold 1 min.) to 330°C @ 20°C/min. (hold 10 min.)
Det.: FID @ 350°C