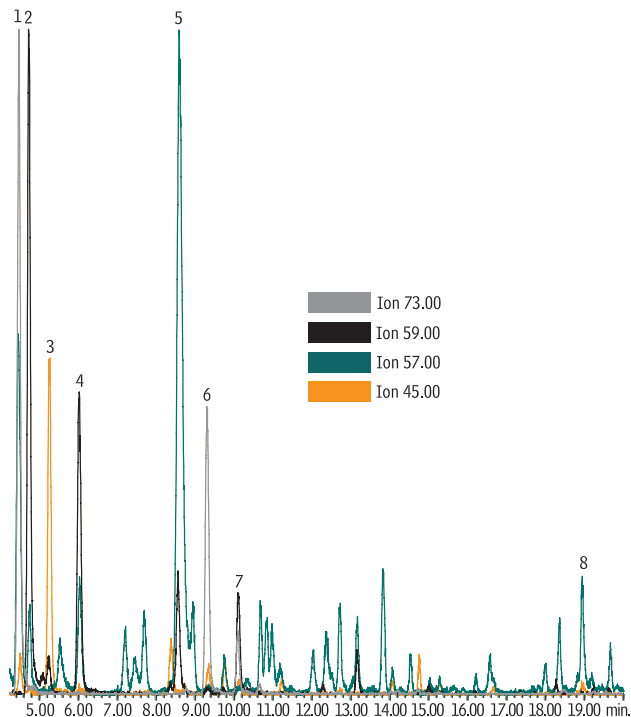


Oxygenates

Rtx®-VMS



GC_EV00847

1. methyl *tert*-butyl ether (MTBE)
2. *tert*-butyl alcohol (TBA)
3. diisopropyl ether
4. ethyl-*tert*-butyl ether
5. *tert*-butyl formate
6. *tert*-amyl methyl ether (TAME)
7. *tert*-amyl alcohol
8. 3,3-dimethyl 1-butanol

Column: Rtx®-VMS, 30m, 0.25mm ID, 1.4 μ m (cat.# 19915)
Sample: South Carolina oxygenates mix
Inj.: split, split ratio 35:1, 1mm Siltek® treated split inlet liner (cat.# 20972-214.1)
Inj. temp.: 200°C
Carrier gas: helium, constant flow
Linear velocity: 34 cm/sec. @ 40°C
Oven temp.: 35°C (7 min.) to 90°C @ 4°C/min., to 220°C @ 35°C/min. (2 min.)
Det.: MS
Interface line temp.: 280°C
Scan range: 35-260 amu
Ionization: EI
Mode: scan

Purge and Trap Conditions

Model: OI 4660 Eclipse Purge and Trap
Trap: #10 (Tenax®/silica gel/carbon molecular sieve)
Sample temp.: 65°C
Purge: 11 min. @ 40mL/min.
Desorb preheat: 185°C
Desorb: 0.5 min. @ 190°C
Desorb flow rate: 35.0mL/min.
Bake: 8 min. @ 210°C
Interface: split injector
Transfer line temp.: 150°C