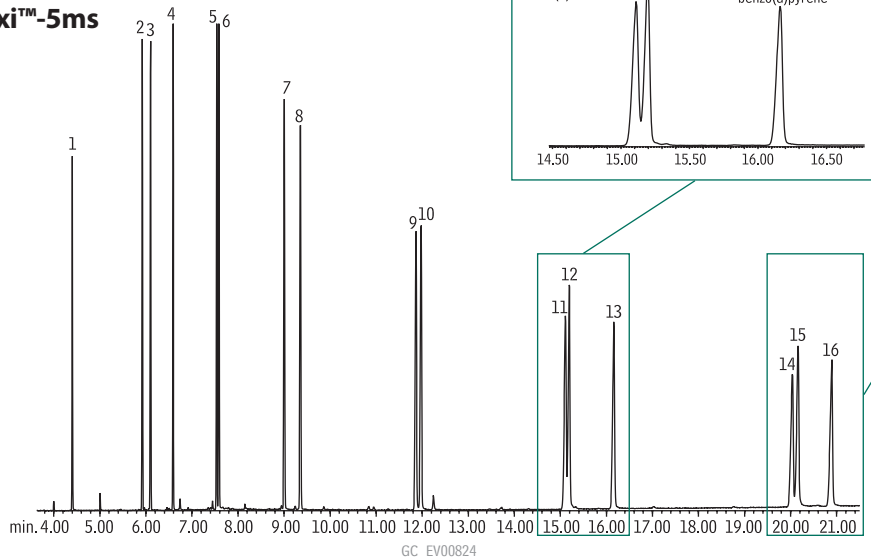


Polynuclear Aromatic Hydrocarbons

US EPA Method 610

Rxi™-5ms



1. naphthalene
2. acenaphthylene
3. acenaphthene
4. fluorene
5. phenanthrene
6. anthracene
7. fluoranthene
8. pyrene
9. benzo(a)anthracene
10. chrysene
11. benzo(b)fluoranthene
12. benzo(k)fluoranthene
13. benzo(a)pyrene
14. indeno(1,2,3-cd)pyrene
15. dibenzo(a,h)anthracene
16. benzo(ghi)perylene

Column: Rxi™-5ms, 30m, 0.25mm ID, 0.25 μ m
(cat.# 13423)
Sample: SV Calibration Mix #5 / 610 PAH Mix
(cat.# 31011)
Inj.: 1.0 μ L, 10ppm each analyte (10ng on
column), splitless (hold 0.1 min.)
4mm Drilled Uniliner® inlet liner (hole at
bottom) (cat.# 20771)
Instrument: Agilent 6890
Inj. temp.: 275°C
Carrier gas: helium, constant flow

Flow rate: 1.2mL/min.
Oven temp.: 75°C (hold 0.5 min.) to 245°C @ 25°C/min.,
to 330°C @ 4°C/min. (hold 1 min.)
Det.: Agilent 5973 GC/MS
Transfer line
temp.: 280°C
Scan range: 35-550 amu
Solvent delay: 2 min.
Tune: DFTPP
Ionization: EI