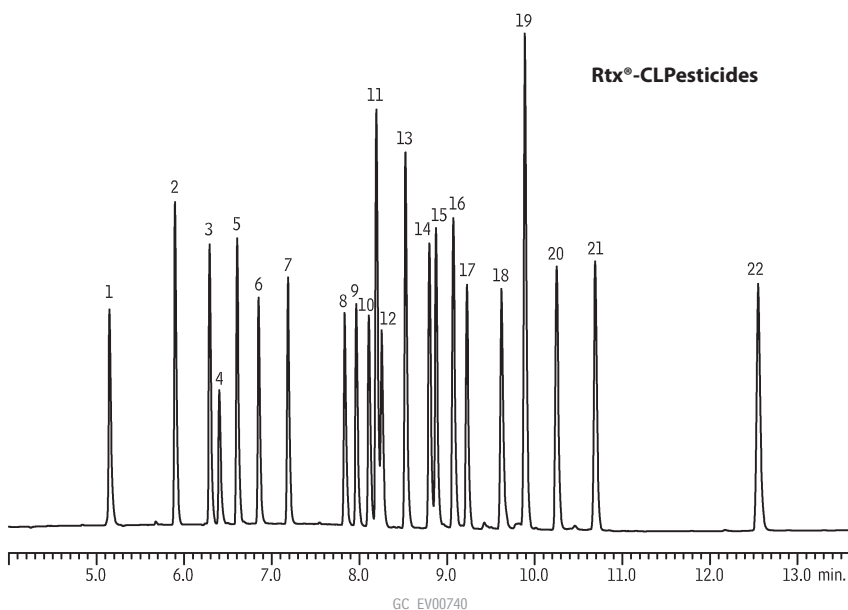


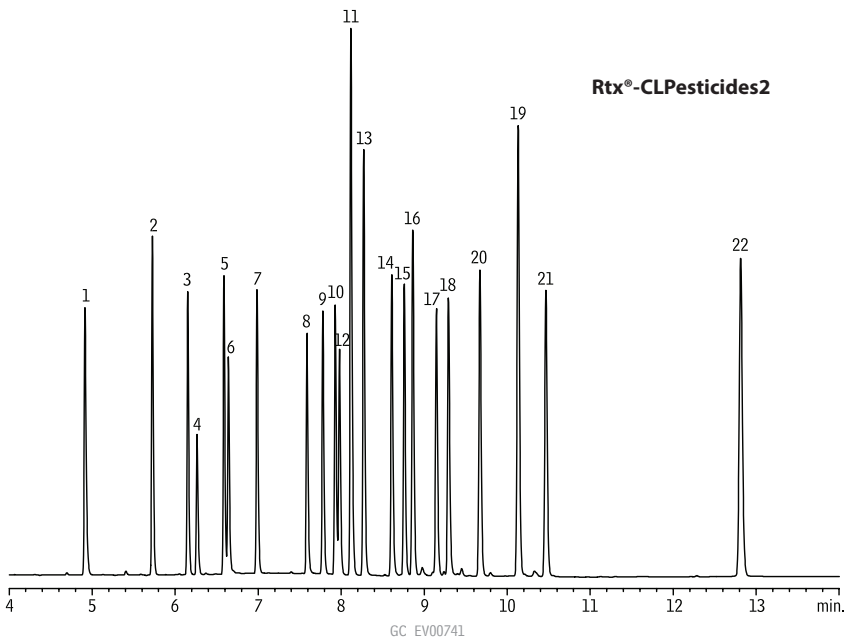
Organochlorine Pesticides

Fast Analysis Conditions

Rtx®-CLPesticides & Rtx®-CLPesticides2 (dual column analysis)



1. 2,4,5,6 tetrachloro-*m*-xylene (SS)
2. α -BHC
3. γ -BHC
4. β -BHC
5. δ -BHC
6. heptachlor
7. aldrin
8. heptachlor epoxide
9. γ -chlordane
10. α -chlordane
11. 4,4'-DDE
12. endosulfan I
13. dieldrin
14. endrin
15. 4,4'-DDD
16. endosulfan II
17. 4,4'-DDT
18. endrin aldehyde
19. methoxychlor
20. endosulfan sulfate
21. endrin ketone
22. decachlorobiphenyl (SS)



Column: Rtx®-CLPesticides
30m, 0.32 ID, 0.50 μ m (cat.# 11139)
Confirmation column: Rtx®-CLPesticides2
30m, 0.32 ID, 0.25 μ m (cat.# 11324)

Sample introduced into 15cm x 0.32mm ID Siltek™ deactivated guard column (cat.# 10027), columns connected by Universal Angled "Y" Press-Tight® Connector (cat.# 20403)

Sample: Organochlorine Pesticide Mix AB #2
(cat.# 32292) 80/160/800 ppb,
2,4,5,6 tetrachloro-*m*-xylene
(SS, cat.# 32027), 80ppb,
decachlorobiphenyl
(SS, cat.# 32029), 160ppb in hexane
Inj.: 1.0 μ L splitless (hold 0.75 min.),
4mm Drilled Uniliner® inlet liner (cat.# 21054)
Inj. temp.: 210°C
Carrier gas: hydrogen, constant pressure
Linear velocity: 60cm/sec. @ 300°C
Oven temp.: 110°C (hold 1 min.) to 245°C @ 20°C/min., to
300°C @ 6°C/min.
Det.: ECD @ 310°C