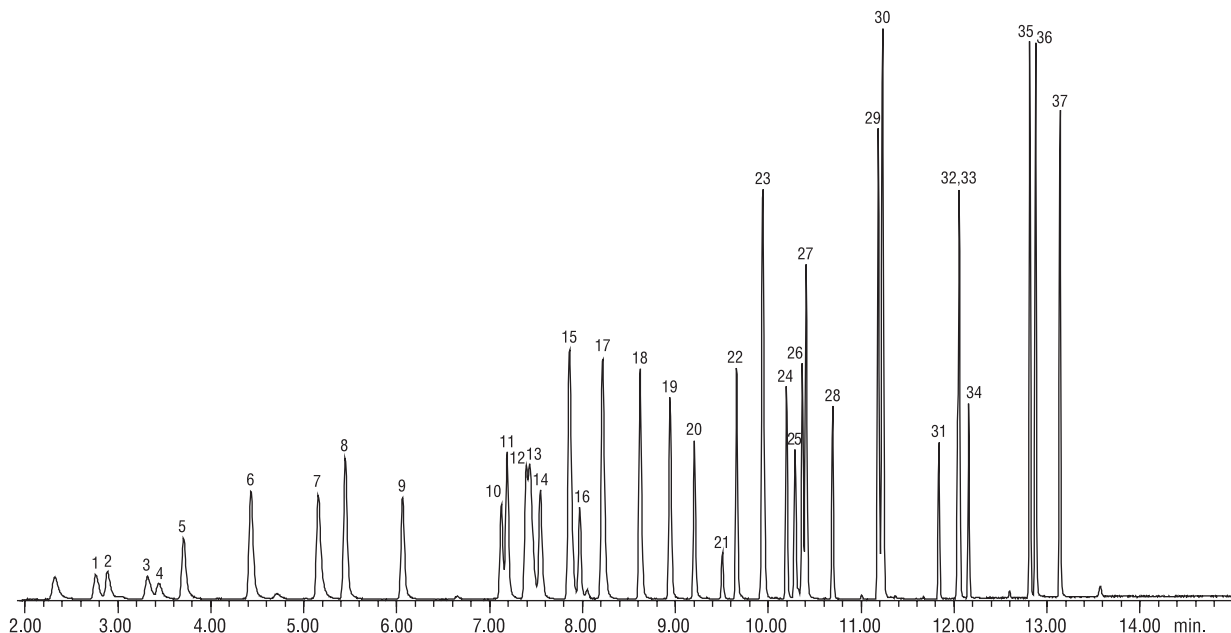


Volatiles
US EPA Method 624
Rtx®-624



GC_EV00701

Rtx®-624, 40m, 0.18mm ID, 1.0µm (cat.# 40925)
 Sample: 624 Internal Standard Mix (cat.# 30023)
 624 Surrogate Standard Mix (cat.# 30243)
 Volatiles MegaMix™ EPA Method 624 (cat.# 30497)

Purge and trap conditions:

Concentrator: Tekmar LSC-3100 Purge and Trap
 Trap: Vocarb 3000 (type K)
 compounds at 50 ppb (IS @ 40ppb) in 5mL of RO water
 11 min. @ 40 mL/min. @ ambient temperature
 Purge: 245°C
 Dry purge: 1 min. @ 40mL/min. (MCS bypassed using Silcosteel® tubing)
 Desorb pPreheat: 245°C
 Desorb: 250°C for 2 min., flow 10mL/min.
 Bake: 260°C for 8 min.
 Interface: Silcosteel® transfer line, 1: 40 split at injection port.
 1mm ID sleeve.

Chromatography:

Inj. temp.: 250°C
 Carrier gas: helium, constant flow
 Flow rate: 1.1 mL/min.
 Dead time: 2.06 minutes @ 50°C
 Oven temp.: 50°C (hold 4 min.) to 100°C @ 12°C/min. (no hold)
 to 230°C @ 27°C/min. (hold 2 min.).
 Det.: Agilent 5971A GC/MS
 Transfer line temp.: 280°C
 Scan range: 35-260 amu
 Tune: PFTBA/BFB
 Ionization: EI

- | | |
|-------------------------------------|---------------------------------------|
| 1. chloromethane | 20. bromodichloromethane |
| 2. vinyl chloride | 21. 2-chloroethyl vinyl ether |
| 3. bromomethane | 22. <i>cis</i> -1,3-dichloropropene |
| 4. chloroethane | 23. toluene |
| 5. trichlorofluoromethane | 24. 2-bromo-1-chloropropane |
| 6. 1,1-dichloroethane | 25. 1,1,2-trichloroethane |
| 7. methylene chloride | 26. tetrachloroethane |
| 8. <i>trans</i> -1,2-dichloroethene | 27. dibromochloromethane |
| 9. 1,1-dichloroethane | 28. <i>trans</i> -1,3-dichloropropene |
| 10. bromochloromethane | 29. chlorobenzene |
| 11. chloroform | 30. ethylbenzene |
| 12. 1,1,1-trichloroethane | 31. bromoform |
| 13. pentafluorobenzene | 32. 1,4-dichlorobutane |
| 14. carbon tetrachloride | 33. 4-bromofluorobenzene |
| 15. benzene | 34. 1,1,2,2-tetrachloroethane |
| 16. 1,2-dichloroethane | 35. 1,3-dichlorobenzene |
| 17. fluorobenzene | 36. 1,4-dichlorobenzene |
| 18. trichloroethene | 37. 1,2-dichlorobenzene |
| 19. 1,2-dichloropropane | |