

Organochlorine Pesticides

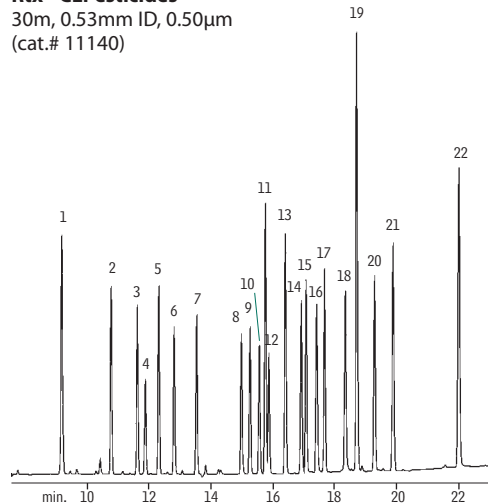
US EPA Method 8081

Rtx[®]-CLPesticides & Rtx[®]-CLPesticides2 (0.53mm ID)

1. 2,4,5,6-tetrachloro-*m*-xylene
2. α -BHC (α -HCH)
3. γ -BHC (lindane)
4. β -BHC (β -HCH)
5. δ -BHC (δ -HCH)
6. heptachlor
7. aldrin
8. heptachlor epoxide
9. γ -chlordane
10. α -chlordane
11. 4,4'-DDE
12. endosulfan I
13. dieldrin
14. endrin
15. 4,4'-DDD
16. endosulfan II
17. 4,4'-DDT
18. endrin aldehyde
19. methoxychlor
20. endosulfan sulfate
21. endrin ketone
22. decachlorobiphenyl

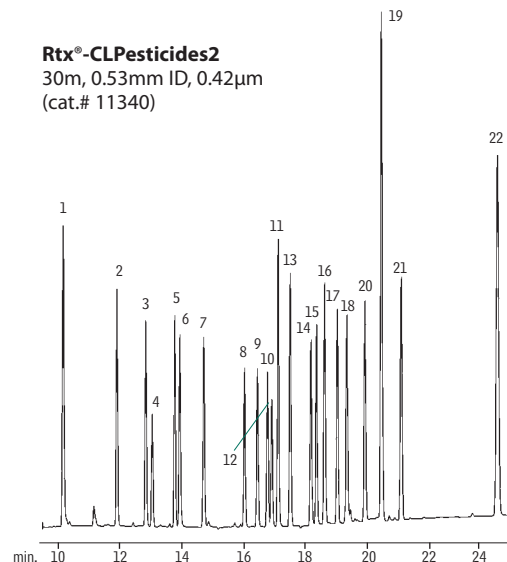
Rtx[®]-CLPesticides

30m, 0.53mm ID, 0.50 μ m
(cat.# 11140)



Rtx[®]-CLPesticides2

30m, 0.53mm ID, 0.42 μ m
(cat.# 11340)



GC_EV00547

On-column

concentration: 16–160pg organochlorine pesticide Mix AB#2 (cat.# 32292)
Oven temp.: 120°C (hold 1 min.) to 300°C (hold 10 min.) @ 9°C/min.
Inj. port: direct, Uniliner[®] liner (cat.# 20335), 200°C
Detector: ECD, 300°C with anode purge
Dead time: 1.9 min.
Head pressure: 3psi (constant)
Flow rate: 2.83mL/min. @ 120°C, helium