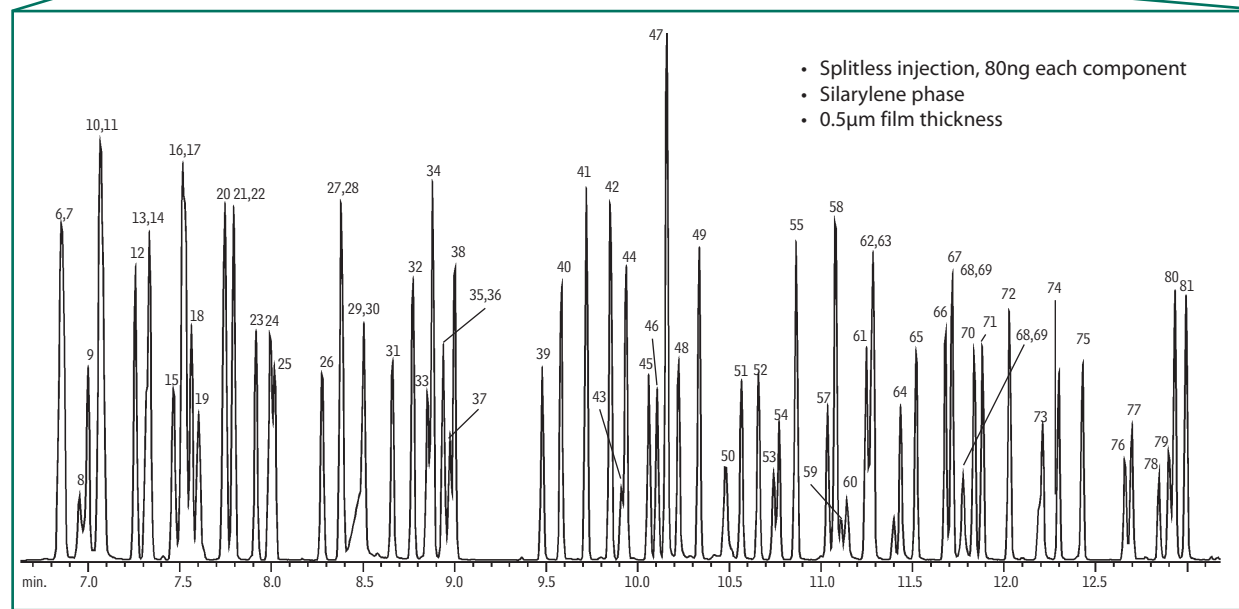
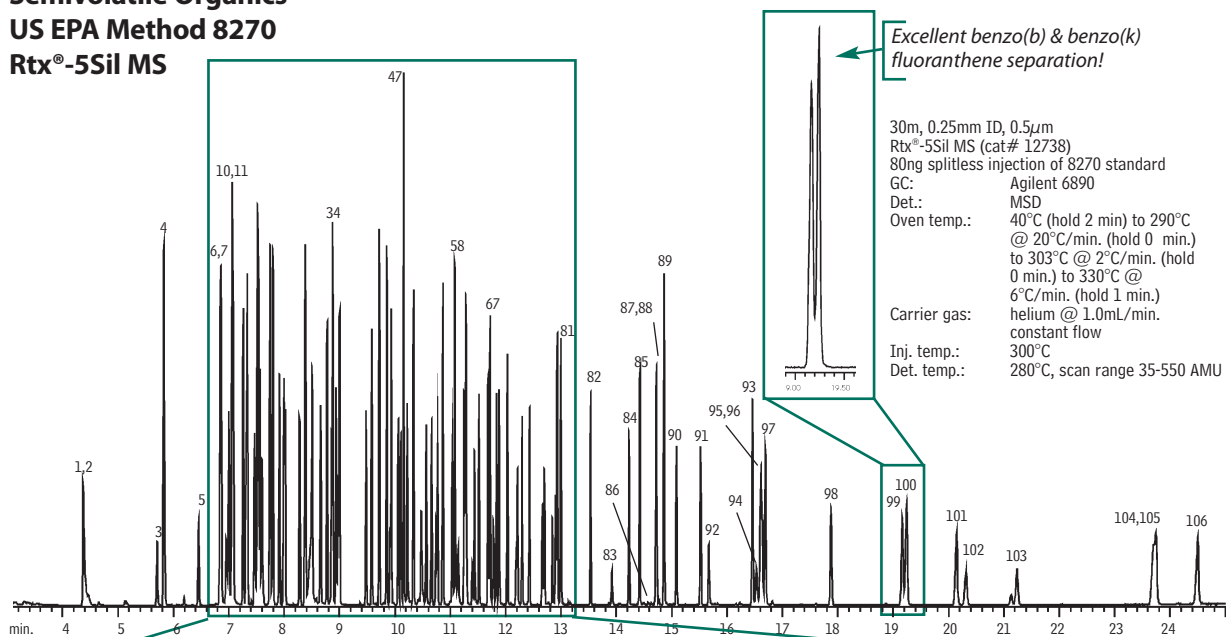


Semivolatile Organics

US EPA Method 8270

Rtx®-5Sil MS



GC_EV00532

- | | | | | |
|---|--------------------------------|--------------------------------|----------------------------------|-----------------------------------|
| 1. N-nitrosodimethylamine | 22. acetophenone | 44. 1,2,4,5-tetrachlorobenzene | 66. 4-chlorophenyl phenyl ether | 88. Aramite |
| 2. pyridine | 23. hexachloroethane | 45. 2,4,6-trichlorophenol | 67. fluorene | 89. <i>p</i> -terphenyl-d14 |
| 3. methyl methanesulfonate | 24. nitrobenzene-d5 | 46. 2,4,5-trichlorophenol | 68. 4-nitroaniline | 90. chlorbenzilate |
| 4. 2-fluorophenol | 25. nitrobenzene | 47. 2-fluorobiphenyl | 69. 4,6-dinitro-2-methylphenol | 91. benzyl butyl phthalate |
| 5. ethyl methanesulfonate | 26. isophorone | 48. safrole | 70. diphenylamine | 92. Kepone |
| 6. phenol-d6 | 27. 2,4-dimethylphenol | 49. 2-chloronaphthalene | 71. azobenzene | 93. bis(2-ethylhexyl)phthalate |
| 7. phenol | 28. 2-nitrophenol | 50. 2-nitroaniline | 72. 2,4,6-tribromophenol | 94. 3,3'-dichlorobenzidine |
| 8. aniline | 29. benzoic acid | 51. 1,4-naphthoquinone | 73. phenacetin | 95. benzo(a)anthracene |
| 9. bis(2-chloroethyl)ether | 30. bis(2-chloroethoxy)methane | 52. dimethylphthalate | 74. 4-bromophenyl phenyl ether | 96. chrysene-d12 |
| 10. 2-chlorophenol-d4 | 31. 2,4-dichlorophenol | 53. 1,3-dinitrobenzene | 75. hexachlorobenzene | 97. chrysene |
| 11. 2-chlorophenol | 32. 1,2,4-trichlorobenzene | 54. 2,6-dinitrotoluene | 76. pentachlorophenol | 98. di- <i>n</i> -octyl phthalate |
| 12. 1,3-dichlorobenzene | 33. naphthalene-d8 | 55. acenaphthylene | 77. pentachloronitrobenzene | 99. benzo(b)fluoranthene |
| 13. 1,4-dichlorobenzene-d4 | 34. naphthalene | 56. 3-nitroaniline | 78. dinoseb | 100. benzo(k)fluoranthene |
| 14. 1,4-dichlorobenzene | 35. 2,6-dichlorophenol | 57. acenaphthene-d10 | 79. phenanthrene-d10 | 101. benzo(a)pyrene |
| 15. benzyl alcohol | 36. 4-chloroaniline | 58. acenaphthene | 80. phenanthrene | 102. perylene-d12 |
| 16. 1,2-dichlorobenzene-d4 | 37. hexachloropropene | 59. 2,4-dinitrophenol | 81. anthracene | 103. 3-methylcholanthrene |
| 17. 1,2-dichlorobenzene | 38. hexachlorobutadiene | 60. 4-nitrophenol | 82. di- <i>n</i> -butylphthalate | 104. indeno(1,2,3-cd)pyrene |
| 18. 2-methylphenol | 39. 4-chloro-3-methylphenol | 61. pentachlorobenzene | 83. 4-nitroquinoline-1-oxide | 105. dibenzo(a,h)anthracene |
| 19. bis(2-chloroisopropyl)ether | 40. isosafrole | 62. 2,4-dinitrotoluene | 84. isodrin | 106. benzo(ghi)perylene |
| 20a. 4-methylphenol | 41. 2-methylnaphthalene | 63. dibenzofuran | 85. fluoranthene | |
| 20b. 3-methylphenol | 42. 1-methylnaphthalene | 64. 2,3,4,6-tetrachlorophenol | 86. benzidine | |
| 21. N-nitroso-di- <i>n</i> -propylamine | 43. hexachlorocyclopentadiene | 65. diethyl phthalate | 87. pyrene | |