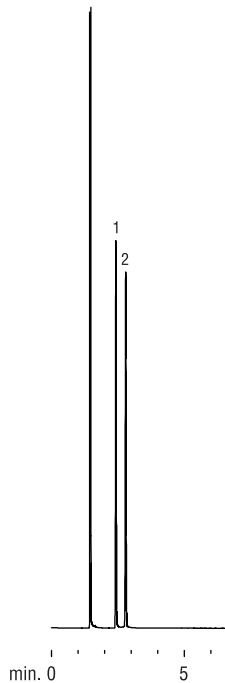


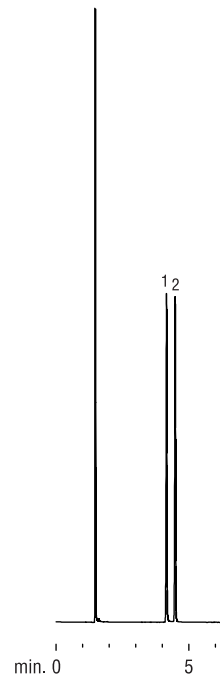
# Glycols

## Rtx<sup>®</sup>-BAC1 & Rtx<sup>®</sup>-BAC2

Rtx<sup>®</sup>-BAC1



Rtx<sup>®</sup>-BAC2



1. ethylene glycol
2. propylene glycol

30m, 0.32mm ID, 1.8 $\mu$ m Rtx<sup>®</sup>-BAC1 (cat.# 18003)

30m, 0.32mm ID, 1.2 $\mu$ m Rtx<sup>®</sup>-BAC2 (cat.# 18002)

0.5 $\mu$ L split injection

Conc.: 1%

Solvent: methanol

Oven temp.: 100°C to 240°C @ 5°C/min. (hold 5 min.)

Inj. temp.: 240°C

Inj. mode: 100:1 split

Liner: Agilent 4mm single gooseneck

Septa purge: 5.0cc/min.

Carrier gas: helium, constant pressure

Pressure: 12psi

Linear velocity: 37cm/sec.

Column flow rate: 2.1mL/min.

Detector: FID/240°C

Make-up gas flow: 40cc/min.

GC\_EV00474